

Daily Summary for Amman Stock Exchange

VALUE TRADED (JD)

	2021	2022	NET CHANGE	CHANGE (%)
Daily	12,330,955	9,742,043	-2,588,912	-21.00%
Cumulative (1/8-4/8)	28,284,007	57,258,724	28,974,717	102.44%
Cumulative (2/1-4/8)	1,281,701,910	1,208,996,651	-72,705,259	-5.67%

NO. OF SHARES TRADED

	2021	2022	NET CHANGE	CHANGE (%)
Daily	14,404,899	4,624,802	-9,780,097	-67.89%
Cumulative (1/8-4/8)	23,791,291	26,646,182	2,854,891	12.00%
Cumulative (2/1-4/8)	1,013,647,589	704,561,688	-309,085,901	-30.49%

NO. OF TRANSACTIONS

	2021	2022	NET CHANGE	CHANGE (%)
Daily	2,383	4,327	1,944	81.58%
Cumulative (1/8-4/8)	10,064	20,687	10,623	105.55%
Cumulative (2/1-4/8)	491,840	474,279	-17,561	-3.57%

SOME FINANCIAL RATIOS FOR THE ASE (4/8/2022)

SECTOR	P/E	P/BV	DIVIDEND YIELD (%)	TURNOVER (%)
FINANCIAL	14.211	0.860	4.831	0.062
SERVICES	19.679	1.496	3.869	0.121
INDUSTRY	12.220	2.792	4.104	0.078
OVERALL	13.574	1.285	4.480	0.076

STOCK PRICE INDEX WEIGHTED BY FREE FLOAT MARKET CAPITALIZATION (1999=1000)

	WEDNESDAY 03/08/2022	THURSDAY 04/08/2022	% CHANGE	
			DAY BEFORE	YTD
GENERAL	2550.8	2569.0	0.72%	21.26%
FINANCIAL	2677.1	2698.4	0.80%	3.61%
SERVICES	1865.6	1869.4	0.20%	40.83%
INDUSTRY	5456.0	5520.2	1.18%	50.58%

STOCK PRICE INDEX WEIGHTED BY FREE FLOAT MARKET CAPITALIZATION ASE20 (2014=1000)

	1370.4	1379.9	0.69%	28.44%
--	--------	--------	-------	--------

Total Return Index ASETR (2021=1074)

	1456.8	1466.9	0.69%	36.54%
--	--------	--------	-------	--------

STOCK PRICE INDEX WEIGHTED BY MARKET CAPITALIZATION (1991=1000)

	WEDNESDAY 03/08/2022	THURSDAY 04/08/2022	% CHANGE	
			DAY BEFORE	YTD
GENERAL	4876.8	4905.0	0.58%	22.46%
BANKS	6709.4	6747.0	0.56%	2.75%
INSURANCE	1292.8	1296.0	0.24%	-2.44%
SERVICES	835.1	837.2	0.25%	7.01%
INDUSTRY	7505.1	7557.8	0.70%	60.79%

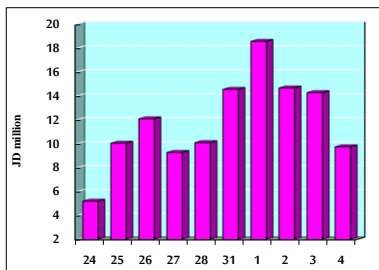
STOCK PRICE MARKET INDEX WEIGHTED BY FREE FLOAT MARKET CAP. (2012=1000)

	WEDNESDAY 03/08/2022	THURSDAY 04/08/2022	% CHANGE	
			DAY BEFORE	YTD
FIRST MARKET	1431.0	1440.7	0.68%	25.83%
SECOND MARKET	817.5	826.0	1.04%	-11.80%

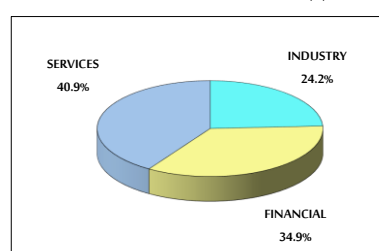
MARKET CAPITALIZATION (JD)

	18,517,055,118	18,623,399,946	0.57%	20.18%
--	----------------	----------------	-------	--------

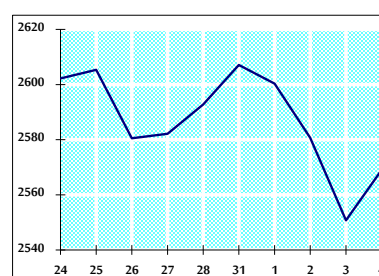
VALUE TRADED FROM 24/7 TO 4/8/2022



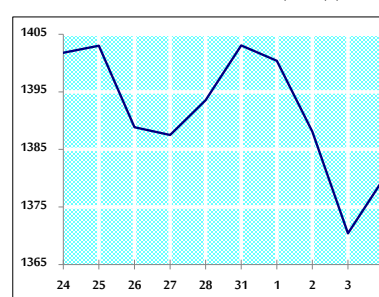
VALUE TRADED BY SECTOR THURSDAY 4/8/2022



GENERAL FREE FLOAT PRICE INDEX FROM 24/7 TO 4/8/2022



ASE20 FREE FLOAT PRICE INDEX FROM 24/7 TO 4/8/2022



GENERAL PRICE INDEX FROM 24/7 TO 4/8/2022

