

Daily Summary for Amman Stock Exchange

VALUE TRADED (JD)

	2021	2022	NET CHANGE	CHANGE (%)
Daily	16,701,737	4,353,112	-12,348,625	-73.94%
Cumulative (1/6-15/6)	134,316,839	91,870,385	-42,446,454	-31.60%
Cumulative (2/1-15/6)	1,002,474,173	834,041,565	-168,432,608	-16.80%

NO. OF SHARES TRADED

	2021	2022	NET CHANGE	CHANGE (%)
Daily	7,789,292	4,578,868	-3,210,424	-41.22%
Cumulative (1/6-15/6)	83,853,583	53,086,407	-30,767,176	-36.69%
Cumulative (2/1-15/6)	834,140,112	492,296,829	-341,843,283	-40.98%

NO. OF TRANSACTIONS

	2021	2022	NET CHANGE	CHANGE (%)
Daily	5,971	2,615	-3,356	-56.20%
Cumulative (1/6-15/6)	51,962	33,266	-18,696	-35.98%
Cumulative (2/1-15/6)	376,578	334,195	-42,383	-11.25%

SOME FINANCIAL RATIOS FOR THE ASE (15/6/2022)

SECTOR	P/E	P/BV	DIVIDEND YIELD (%)	TURNOVER (%)
FINANCIAL	13.768	0.834	4.986	0.087
SERVICES	17.399	1.323	4.376	0.053
INDUSTRY	12.772	2.918	3.926	0.035
OVERALL	13.482	1.270	4.554	0.074

STOCK PRICE INDEX WEIGHTED BY FREE FLOAT MARKET CAPITALIZATION (1999=1000)

	TUESDAY 14/06/2022	WEDNESDAY 15/06/2022	% CHANGE	
			DAY BEFORE	YTD
GENERAL	2430.7	2430.5	-0.01%	14.72%
FINANCIAL	2619.9	2625.3	0.20%	0.80%
SERVICES	1573.1	1574.0	0.06%	18.57%
INDUSTRY	5692.0	5660.9	-0.55%	54.42%

STOCK PRICE INDEX WEIGHTED BY FREE FLOAT MARKET CAPITALIZATION ASE20 (2014=1000)

	1298.3	1298.0	-0.02%	20.82%
--	--------	--------	--------	--------

Total Return Index ASETR (2021=1074)

	1380.2	1379.9	-0.02%	28.44%
--	--------	--------	--------	--------

STOCK PRICE INDEX WEIGHTED BY MARKET CAPITALIZATION (1991=1000)

	TUESDAY 14/06/2022	WEDNESDAY 15/06/2022	% CHANGE	
			DAY BEFORE	YTD
GENERAL	4828.1	4829.9	0.04%	20.59%
BANKS	6510.0	6519.2	0.14%	-0.72%
INSURANCE	1304.1	1299.1	-0.38%	-2.20%
SERVICES	773.9	776.4	0.32%	-0.77%
INDUSTRY	7710.5	7700.8	-0.13%	63.83%

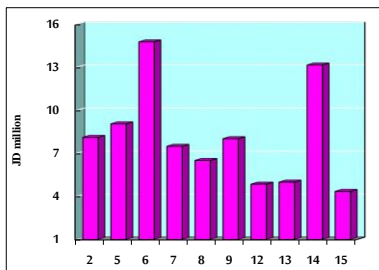
STOCK PRICE MARKET INDEX WEIGHTED BY FREE FLOAT MARKET CAP. (2012=1000)

	TUESDAY 14/06/2022	WEDNESDAY 15/06/2022	% CHANGE	
			DAY BEFORE	YTD
FIRST MARKET	1359.6	1358.5	-0.08%	18.65%
SECOND MARKET	806.7	813.0	0.79%	-13.19%

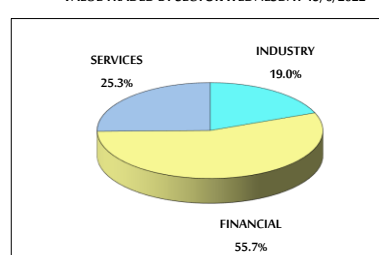
MARKET CAPITALIZATION (JD)

	18,369,546,342	18,376,830,698	0.04%	18.59%
--	----------------	----------------	-------	--------

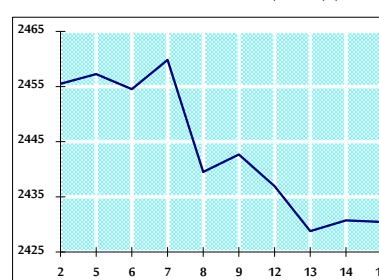
VALUE TRADED FROM 2/6 TO 15/6/2022



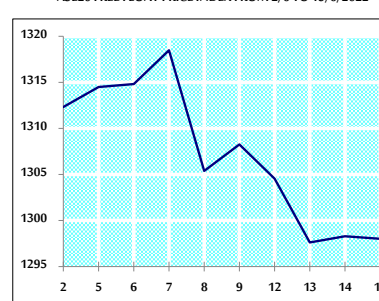
VALUE TRADED BY SECTOR WEDNESDAY 15/6/2022



GENERAL FREE FLOAT PRICE INDEX FROM 2/6 TO 15/6/2022



ASE20 FREE FLOAT PRICE INDEX FROM 2/6 TO 15/6/2022



GENERAL PRICE INDEX FROM 2/6 TO 15/6/2022

