

Daily Summary for Amman Stock Exchange

VALUE TRADED (JD)

	2021	2022	NET CHANGE	CHANGE (%)
Daily	15,103,749	4,998,817	-10,104,932	-66.90%
Cumulative (1/6-13/6)	103,733,045	74,359,050	-29,373,995	-28.32%
Cumulative (2/1-13/6)	971,890,379	816,530,230	-155,360,149	-15.99%

NO. OF SHARES TRADED

	2021	2022	NET CHANGE	CHANGE (%)
Daily	11,171,688	3,431,119	-7,740,569	-69.29%
Cumulative (1/6-13/6)	68,466,428	39,455,913	-29,010,515	-42.37%
Cumulative (2/1-13/6)	818,752,957	478,666,335	-340,086,622	-41.54%

NO. OF TRANSACTIONS

	2021	2022	NET CHANGE	CHANGE (%)
Daily	4,126	3,026	-1,100	-26.66%
Cumulative (1/6-13/6)	40,587	27,234	-13,353	-32.90%
Cumulative (2/1-13/6)	365,203	328,163	-37,040	-10.14%

SOME FINANCIAL RATIOS FOR THE ASE (13/6/2022)

SECTOR	P/E	P/BV	DIVIDEND YIELD (%)	TURNOVER (%)
FINANCIAL	13.745	0.833	4.994	0.060
SERVICES	17.414	1.324	4.372	0.052
INDUSTRY	12.782	2.920	3.923	0.033
OVERALL	13.477	1.269	4.555	0.055

STOCK PRICE INDEX WEIGHTED BY FREE FLOAT MARKET CAPITALIZATION (1999=1000)

	SUNDAY 12/06/2022	MONDAY 13/06/2022	% CHANGE	
			DAY BEFORE	YTD
GENERAL	2436.9	2428.8	-0.33%	14.64%
FINANCIAL	2641.7	2617.4	-0.92%	0.50%
SERVICES	1576.5	1575.9	-0.04%	18.72%
INDUSTRY	5630.3	5674.7	0.79%	54.80%

STOCK PRICE INDEX WEIGHTED BY FREE FLOAT MARKET CAPITALIZATION ASE20 (2014=1000)

	1304.5	1297.6	-0.53%	20.78%
--	--------	--------	--------	--------

Total Return Index ASETR (2021=1074)

	1386.8	1379.5	-0.53%	28.40%
--	--------	--------	--------	--------

STOCK PRICE INDEX WEIGHTED BY MARKET CAPITALIZATION (1991=1000)

	SUNDAY 12/06/2022	MONDAY 13/06/2022	% CHANGE	
			DAY BEFORE	YTD
GENERAL	4827.3	4828.2	0.02%	20.55%
BANKS	6548.1	6514.9	-0.51%	-0.78%
INSURANCE	1315.3	1304.1	-0.85%	-1.82%
SERVICES	773.0	774.1	0.15%	-1.06%
INDUSTRY	7666.9	7705.0	0.50%	63.92%

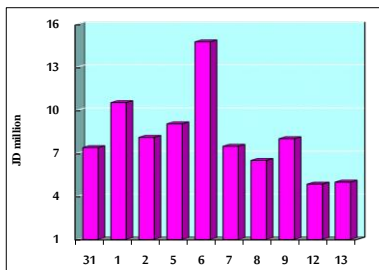
STOCK PRICE MARKET INDEX WEIGHTED BY FREE FLOAT MARKET CAP. (2012=1000)

	SUNDAY 12/06/2022	MONDAY 13/06/2022	% CHANGE	
			DAY BEFORE	YTD
FIRST MARKET	1364.7	1358.8	-0.43%	18.68%
SECOND MARKET	803.8	804.2	0.05%	-14.14%

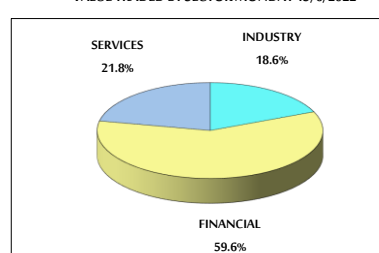
MARKET CAPITALIZATION (JD)

	18,369,111,204	18,370,472,472	0.01%	18.55%
--	----------------	----------------	-------	--------

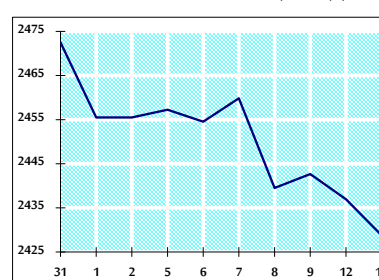
VALUE TRADED FROM 31/5 TO 13/6/2022



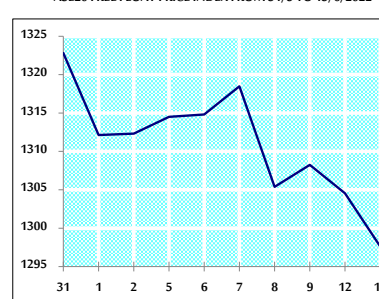
VALUE TRADED BY SECTOR MONDAY 13/6/2022



GENERAL FREE FLOAT PRICE INDEX FROM 31/5 TO 13/6/2022



ASE20 FREE FLOAT PRICE INDEX FROM 31/5 TO 13/6/2022



GENERAL PRICE INDEX FROM 31/5 TO 13/6/2022

