

Daily Summary for Amman Stock Exchange

VALUE TRADED (JD)

	2021	2022	NET CHANGE	CHANGE (%)
Daily	13,066,760	9,055,731	-4,011,029	-30.70%
Cumulative (1/6-5/6)	34,145,754	27,707,039	-6,438,715	-18.86%
Cumulative (2/1-5/6)	902,303,088	769,878,219	-132,424,869	-14.68%

NO. OF SHARES TRADED

	2021	2022	NET CHANGE	CHANGE (%)
Daily	7,426,592	5,197,805	-2,228,787	-30.01%
Cumulative (1/6-5/6)	21,556,819	14,840,994	-6,715,825	-31.15%
Cumulative (2/1-5/6)	771,843,348	454,051,416	-317,791,932	-41.17%

NO. OF TRANSACTIONS

	2021	2022	NET CHANGE	CHANGE (%)
Daily	4,966	2,452	-2,514	-50.62%
Cumulative (1/6-5/6)	14,990	8,743	-6,247	-41.67%
Cumulative (2/1-5/6)	339,606	309,672	-29,934	-8.81%

SOME FINANCIAL RATIOS FOR THE ASE (5/6/2022)

SECTOR	P/E	P/BV	DIVIDEND YIELD (%)	TURNOVER (%)
FINANCIAL	13.977	0.847	4.911	0.050
SERVICES	17.288	1.314	4.404	0.221
INDUSTRY	12.911	2.949	3.884	0.037
OVERALL	13.622	1.283	4.507	0.084

STOCK PRICE INDEX WEIGHTED BY FREE FLOAT MARKET CAPITALIZATION (1999=1000)

	THURSDAY 02/06/2022	SUNDAY 05/06/2022	% CHANGE	
			DAY BEFORE	YTD
GENERAL	2455.5	2457.3	0.07%	15.98%
FINANCIAL	2669.8	2680.3	0.39%	2.91%
SERVICES	1557.1	1549.5	-0.49%	16.73%
INDUSTRY	5755.0	5746.2	-0.15%	56.75%

STOCK PRICE INDEX WEIGHTED BY FREE FLOAT MARKET CAPITALIZATION ASE20 (2014=1000)

	1312.3	1314.5	0.17%	22.35%
--	--------	--------	-------	--------

Total Return Index ASETR (2021=1074)

	1395.1	1397.4	0.17%	30.07%
--	--------	--------	-------	--------

STOCK PRICE INDEX WEIGHTED BY MARKET CAPITALIZATION (1991=1000)

	THURSDAY 02/06/2022	SUNDAY 05/06/2022	% CHANGE	
			DAY BEFORE	YTD
GENERAL	4879.2	4880.2	0.02%	21.84%
BANKS	6606.7	6623.0	0.25%	0.86%
INSURANCE	1363.0	1364.3	0.10%	2.71%
SERVICES	774.0	773.0	-0.12%	-1.19%
INDUSTRY	7778.1	7765.3	-0.16%	65.20%

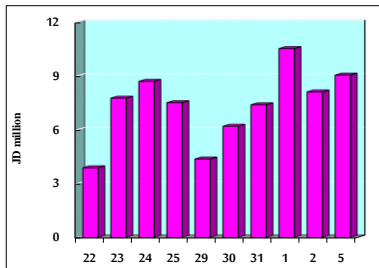
STOCK PRICE MARKET INDEX WEIGHTED BY FREE FLOAT MARKET CAP. (2012=1000)

	THURSDAY 02/06/2022	SUNDAY 05/06/2022	% CHANGE	
			DAY BEFORE	YTD
FIRST MARKET	1373.8	1375.5	0.12%	20.13%
SECOND MARKET	816.3	813.6	-0.33%	-13.13%

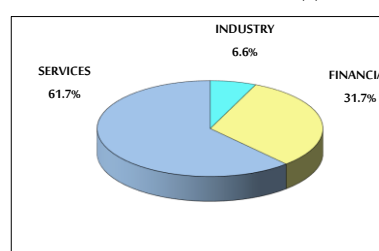
MARKET CAPITALIZATION (JD)

	18,565,686,872	18,569,016,084	0.02%	19.83%
--	----------------	----------------	-------	--------

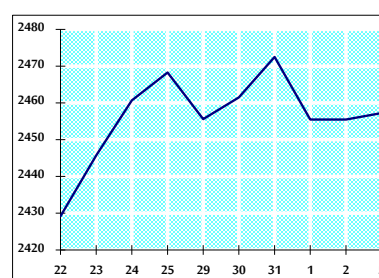
VALUE TRADED FROM 22/5 TO 5/6/2022



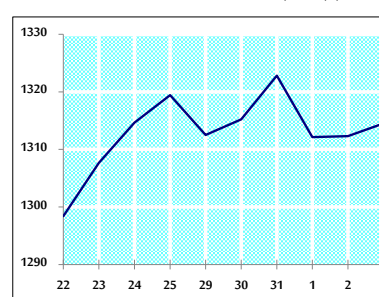
VALUE TRADED BY SECTOR SUNDAY 5/6/2022



GENERAL FREE FLOAT PRICE INDEX FROM 22/5 TO 5/6/2022



ASE20 FREE FLOAT PRICE INDEX FROM 22/5 TO 5/6/2022



GENERAL PRICE INDEX FROM 22/5 TO 5/6/2022

