

Daily Summary for Amman Stock Exchange

VALUE TRADED (JD)

	2021	2022	NET CHANGE	CHANGE (%)
Daily	10,996,192	8,115,879	-2,880,313	-26.19%
Cumulative (1/6-2/6)	21,078,994	18,651,308	-2,427,686	-11.52%
Cumulative (2/1-2/6)	889,236,328	760,822,488	-128,413,840	-14.44%

NO. OF SHARES TRADED

	2021	2022	NET CHANGE	CHANGE (%)
Daily	7,183,854	5,063,775	-2,120,079	-29.51%
Cumulative (1/6-2/6)	14,130,227	9,643,189	-4,487,038	-31.75%
Cumulative (2/1-2/6)	764,416,756	448,853,611	-315,563,145	-41.28%

NO. OF TRANSACTIONS

	2021	2022	NET CHANGE	CHANGE (%)
Daily	5,137	3,137	-2,000	-38.93%
Cumulative (1/6-2/6)	10,024	6,291	-3,733	-37.24%
Cumulative (2/1-2/6)	334,640	307,220	-27,420	-8.19%

SOME FINANCIAL RATIOS FOR THE ASE (2/6/2022)

SECTOR	P/E	P/BV	DIVIDEND YIELD (%)	TURNOVER (%)
FINANCIAL	13.942	0.844	4.924	0.070
SERVICES	17.344	1.318	4.390	0.145
INDUSTRY	12.929	2.954	3.879	0.037
OVERALL	13.619	1.283	4.508	0.082

STOCK PRICE INDEX WEIGHTED BY FREE FLOAT MARKET CAPITALIZATION (1999=1000)

	WEDNESDAY 01/06/2022	THURSDAY 02/06/2022	% CHANGE	
			DAY BEFORE	YTD
GENERAL	2455.5	2455.5	0.00%	15.90%
FINANCIAL	2669.3	2669.8	0.02%	2.51%
SERVICES	1557.1	1557.1	0.00%	17.30%
INDUSTRY	5757.0	5755.0	-0.03%	56.99%

STOCK PRICE INDEX WEIGHTED BY FREE FLOAT MARKET CAPITALIZATION ASE20 (2014=1000)

	1312.1	1312.3	0.01%	22.15%
--	--------	--------	-------	--------

Total Return Index ASETR (2021=1074)

	1394.9	1395.1	0.01%	29.85%
--	--------	--------	-------	--------

STOCK PRICE INDEX WEIGHTED BY MARKET CAPITALIZATION (1991=1000)

	WEDNESDAY 01/06/2022	THURSDAY 02/06/2022	% CHANGE	
			DAY BEFORE	YTD
GENERAL	4882.9	4879.2	-0.07%	21.82%
BANKS	6615.0	6606.7	-0.13%	0.61%
INSURANCE	1359.8	1363.0	0.24%	2.61%
SERVICES	769.4	774.0	0.60%	-1.08%
INDUSTRY	7793.7	7778.1	-0.20%	65.47%

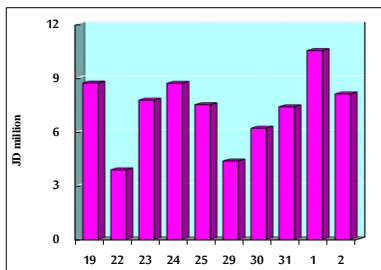
STOCK PRICE MARKET INDEX WEIGHTED BY FREE FLOAT MARKET CAP. (2012=1000)

	WEDNESDAY 01/06/2022	THURSDAY 02/06/2022	% CHANGE	
			DAY BEFORE	YTD
FIRST MARKET	1374.4	1373.8	-0.04%	19.99%
SECOND MARKET	812.2	816.3	0.50%	-12.85%

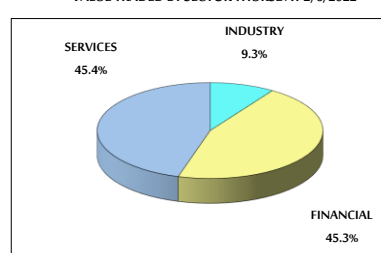
MARKET CAPITALIZATION (JD)

	18,579,342,236	18,565,686,872	-0.07%	19.81%
--	----------------	----------------	--------	--------

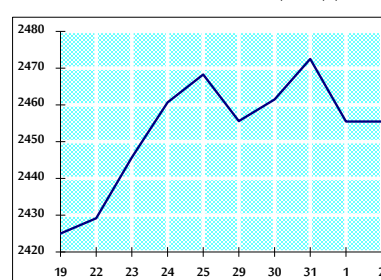
VALUE TRADED FROM 19/5 TO 2/6/2022



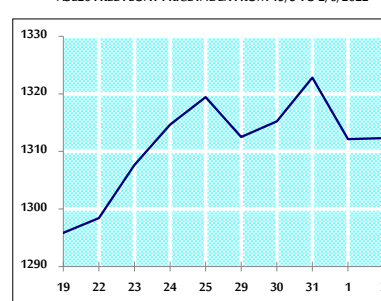
VALUE TRADED BY SECTOR THURSDAY 2/6/2022



GENERAL FREE FLOAT PRICE INDEX FROM 19/5 TO 2/6/2022



ASE20 FREE FLOAT PRICE INDEX FROM 19/5 TO 2/6/2022



GENERAL PRICE INDEX FROM 19/5 TO 2/6/2022

