

Daily Summary for Amman Stock Exchange

VALUE TRADED (JD)

	2021	2022	NET CHANGE	CHANGE (%)
Daily	10,082,802	10,535,429	452,627	4.49%
Cumulative (1/6-1/6)	10,082,802	10,535,429	452,627	4.49%
Cumulative (2/1-1/6)	878,240,136	752,706,609	-125,533,527	-14.29%

NO. OF SHARES TRADED

	2021	2022	NET CHANGE	CHANGE (%)
Daily	6,946,373	4,579,414	-2,366,959	-34.07%
Cumulative (1/6-1/6)	6,946,373	4,579,414	-2,366,959	-34.07%
Cumulative (2/1-1/6)	757,232,902	443,789,836	-313,443,066	-41.39%

NO. OF TRANSACTIONS

	2021	2022	NET CHANGE	CHANGE (%)
Daily	4,887	3,154	-1,733	-35.46%
Cumulative (1/6-1/6)	4,887	3,154	-1,733	-35.46%
Cumulative (2/1-1/6)	329,503	304,083	-25,420	-7.71%

SOME FINANCIAL RATIOS FOR THE ASE (1/6/2022)

SECTOR	P/E	P/BV	DIVIDEND YIELD (%)	TURNOVER (%)
FINANCIAL	13.949	0.845	4.921	0.082
SERVICES	17.314	1.316	4.397	0.066
INDUSTRY	12.952	2.959	3.872	0.041
OVERALL	13.629	1.284	4.504	0.074

STOCK PRICE INDEX WEIGHTED BY FREE FLOAT MARKET CAPITALIZATION (1999=1000)

	TUESDAY 31/05/2022	WEDNESDAY 01/06/2022	% CHANGE	
			DAY BEFORE	YTD
GENERAL	2472.5	2455.5	-0.69%	15.90%
FINANCIAL	2684.3	2669.3	-0.56%	2.49%
SERVICES	1571.2	1557.1	-0.90%	17.30%
INDUSTRY	5794.1	5757.0	-0.64%	57.04%

STOCK PRICE INDEX WEIGHTED BY FREE FLOAT MARKET CAPITALIZATION ASE20 (2014=1000)

	1322.8	1312.1	-0.81%	22.13%
--	--------	--------	--------	--------

Total Return Index ASETR (2021=1074)

	1406.2	1394.9	-0.81%	29.83%
--	--------	--------	--------	--------

STOCK PRICE INDEX WEIGHTED BY MARKET CAPITALIZATION (1991=1000)

	TUESDAY 31/05/2022	WEDNESDAY 01/06/2022	% CHANGE	
			DAY BEFORE	YTD
GENERAL	4905.7	4882.9	-0.46%	21.91%
BANKS	6644.8	6615.0	-0.45%	0.74%
INSURANCE	1355.7	1359.8	0.30%	2.37%
SERVICES	777.3	769.4	-1.03%	-1.66%
INDUSTRY	7820.8	7793.7	-0.35%	65.81%

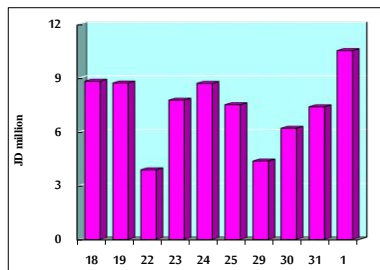
STOCK PRICE MARKET INDEX WEIGHTED BY FREE FLOAT MARKET CAP. (2012=1000)

	TUESDAY 31/05/2022	WEDNESDAY 01/06/2022	% CHANGE	
			DAY BEFORE	YTD
FIRST MARKET	1384.2	1374.4	-0.71%	20.04%
SECOND MARKET	814.6	812.2	-0.30%	-13.28%

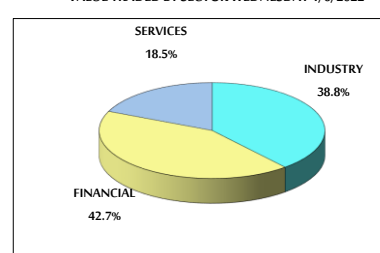
MARKET CAPITALIZATION (JD)

	18,660,931,975	18,579,342,236	-0.44%	19.90%
--	----------------	----------------	--------	--------

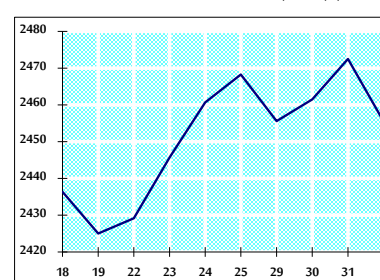
VALUE TRADED FROM 18/5 TO 1/6/2022



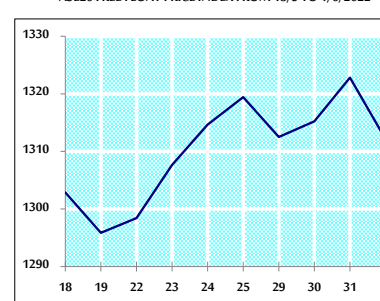
VALUE TRADED BY SECTOR WEDNESDAY 1/6/2022



GENERAL FREE FLOAT PRICE INDEX FROM 18/5 TO 1/6/2022



ASE20 FREE FLOAT PRICE INDEX FROM 18/5 TO 1/6/2022



GENERAL PRICE INDEX FROM 18/5 TO 1/6/2022

