

## Daily Summary for Amman Stock Exchange

### VALUE TRADED (JD)

	2021	2022	NET CHANGE	CHANGE (%)
Daily	16,774,841	4,375,200	-12,399,641	-73.92%
Cumulative (8/5-29/5)	155,884,429	165,125,636	9,241,207	5.93%
Cumulative (2/1-29/5)	814,300,004	728,571,839	-85,728,165	-10.53%

### NO. OF SHARES TRADED

	2021	2022	NET CHANGE	CHANGE (%)
Daily	10,705,577	2,595,521	-8,110,056	-75.76%
Cumulative (8/5-29/5)	102,859,510	78,667,591	-24,191,919	-23.52%
Cumulative (2/1-29/5)	715,208,926	430,863,126	-284,345,800	-39.76%

### NO. OF TRANSACTIONS

	2021	2022	NET CHANGE	CHANGE (%)
Daily	6,611	2,149	-4,462	-67.49%
Cumulative (8/5-29/5)	62,050	59,132	-2,918	-4.70%
Cumulative (2/1-29/5)	306,566	294,876	-11,690	-3.81%

### SOME FINANCIAL RATIOS FOR THE ASE (29/5/2022)

SECTOR	P/E	P/BV	DIVIDEND YIELD (%)	TURNOVER (%)
FINANCIAL	14.004	0.844	4.914	0.033
SERVICES	17.458	1.327	4.361	0.068
INDUSTRY	12.912	2.950	3.884	0.049
OVERALL	13.625	1.282	4.506	0.042

### STOCK PRICE INDEX WEIGHTED BY FREE FLOAT MARKET CAPITALIZATION (1999=1000)

	WEDNESDAY 25/05/2022	SUNDAY 29/05/2022	% CHANGE	
			DAY BEFORE	YTD
GENERAL	2468.3	2455.6	-0.51%	15.90%
FINANCIAL	2680.0	2664.9	-0.56%	2.32%
SERVICES	1565.2	1566.7	0.09%	18.02%
INDUSTRY	5786.0	5747.8	-0.66%	56.79%

### STOCK PRICE INDEX WEIGHTED BY FREE FLOAT MARKET CAPITALIZATION ASE20 (2014=1000)

	1319.4	1312.5	-0.52%	22.17%
--	--------	--------	--------	--------

### Total Return Index ASETR (2021=1074)

	1402.6	1395.3	-0.52%	29.87%
--	--------	--------	--------	--------

### STOCK PRICE INDEX WEIGHTED BY MARKET CAPITALIZATION (1991=1000)

	WEDNESDAY 25/05/2022	SUNDAY 29/05/2022	% CHANGE	
			DAY BEFORE	YTD
GENERAL	4905.3	4881.9	-0.48%	21.89%
BANKS	6657.8	6616.6	-0.62%	0.77%
INSURANCE	1364.4	1363.8	-0.04%	2.67%
SERVICES	781.2	777.2	-0.52%	-0.67%
INDUSTRY	7795.4	7769.0	-0.34%	65.28%

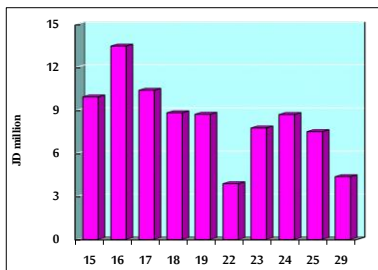
### STOCK PRICE MARKET INDEX WEIGHTED BY FREE FLOAT MARKET CAP. (2012=1000)

	WEDNESDAY 25/05/2022	SUNDAY 29/05/2022	% CHANGE	
			DAY BEFORE	YTD
FIRST MARKET	1380.6	1374.3	-0.46%	20.04%
SECOND MARKET	818.2	811.2	-0.87%	-13.39%

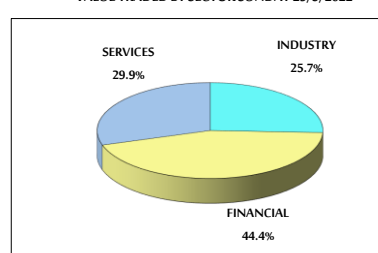
### MARKET CAPITALIZATION (JD)

	18,660,261,531	18,578,631,983	-0.44%	19.90%
--	----------------	----------------	--------	--------

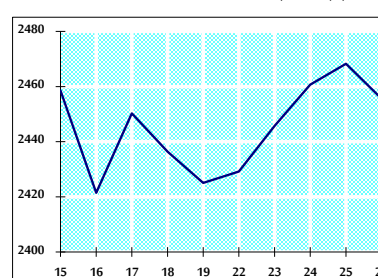
### VALUE TRADED FROM 15/5 TO 29/5/2022



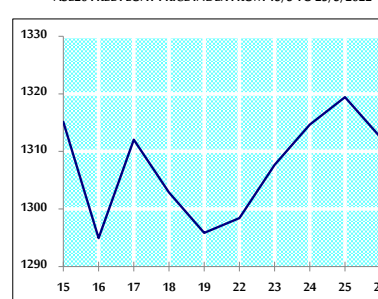
### VALUE TRADED BY SECTOR SUNDAY 29/5/2022



### GENERAL FREE FLOAT PRICE INDEX FROM 15/5 TO 29/5/2022



### ASE20 FREE FLOAT PRICE INDEX FROM 15/5 TO 29/5/2022



### GENERAL PRICE INDEX FROM 15/5 TO 29/5/2022

