

Daily Summary for Amman Stock Exchange

VALUE TRADED (JD)

	2021	2022	NET CHANGE	CHANGE (%)
Daily	6,674,537	10,067,129	3,392,592	50.83%
Cumulative (3/4-10/4)	44,404,538	45,735,283	1,330,745	3.00%
Cumulative (2/1-10/4)	569,978,014	432,683,324	-137,294,690	-24.09%

NO. OF SHARES TRADED

	2021	2022	NET CHANGE	CHANGE (%)
Daily	7,612,936	3,736,690	-3,876,246	-50.92%
Cumulative (3/4-10/4)	42,811,576	20,861,153	-21,950,423	-51.27%
Cumulative (2/1-10/4)	529,526,085	293,066,553	-236,459,532	-44.65%

NO. OF TRANSACTIONS

	2021	2022	NET CHANGE	CHANGE (%)
Daily	2,980	3,618	638	21.41%
Cumulative (3/4-10/4)	20,010	16,607	-3,403	-17.01%
Cumulative (2/1-10/4)	205,147	188,148	-16,999	-8.29%

SOME FINANCIAL RATIOS FOR THE ASE (10/4/2022)

SECTOR	P/E	P/BV	DIVIDEND YIELD (%)	TURNOVER (%)
FINANCIAL	13.714	0.823	5.002	0.063
SERVICES	16.014	1.204	4.232	0.051
INDUSTRY	12.377	2.775	4.047	0.062
OVERALL	13.058	1.226	4.615	0.060

STOCK PRICE INDEX WEIGHTED BY FREE FLOAT MARKET CAPITALIZATION (1999=1000)

	THURSDAY 07/04/2022	SUNDAY 10/04/2022	% CHANGE	
			DAY BEFORE	YTD
GENERAL	2284.6	2340.0	2.42%	10.45%
FINANCIAL	2580.9	2616.8	1.39%	0.47%
SERVICES	1335.3	1350.2	1.12%	1.72%
INDUSTRY	5352.3	5655.5	5.66%	54.27%

STOCK PRICE INDEX WEIGHTED BY FREE FLOAT MARKET CAPITALIZATION ASE20 (2014=1000)

	1210.9	1243.8	2.71%	15.77%
--	--------	--------	-------	--------

Total Return Index ASETR (2021=1074)

	1242.9	1279.2	2.92%	19.07%
--	--------	--------	-------	--------

STOCK PRICE INDEX WEIGHTED BY MARKET CAPITALIZATION (1991=1000)

	THURSDAY 07/04/2022	SUNDAY 10/04/2022	% CHANGE	
			DAY BEFORE	YTD
GENERAL	4533.9	4678.0	3.18%	16.79%
BANKS	6376.8	6443.3	1.04%	-1.87%
INSURANCE	1317.2	1315.5	-0.13%	-0.97%
SERVICES	743.7	749.5	0.78%	-4.20%
INDUSTRY	6892.5	7312.9	6.10%	55.58%

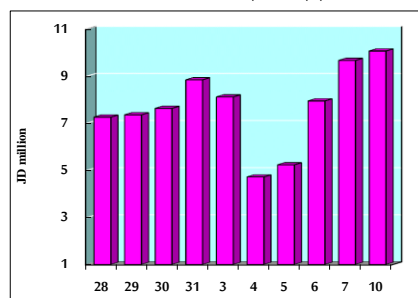
STOCK PRICE MARKET INDEX WEIGHTED BY FREE FLOAT MARKET CAP. (2012=1000)

	THURSDAY 07/04/2022	SUNDAY 10/04/2022	% CHANGE	
			DAY BEFORE	YTD
FIRST MARKET	1272.1	1305.7	2.64%	14.04%
SECOND MARKET	795.1	794.7	-0.06%	-15.15%

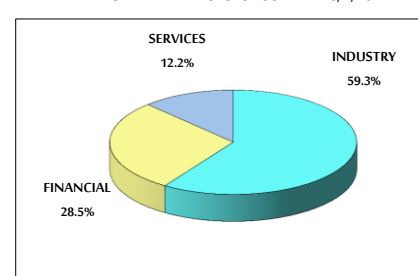
MARKET CAPITALIZATION (JD)

	17,379,143,214	17,871,669,722	2.83%	15.33%
--	----------------	----------------	-------	--------

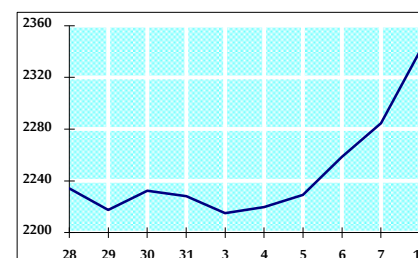
VALUE TRADED FROM 28/3 TO 10/4/2022



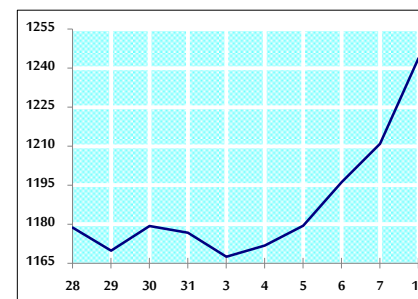
VALUE TRADED BY SECTOR SUNDAY 10/4/2022



GENERAL FREE FLOAT PRICE INDEX FROM 28/3 TO 10/4/2022



ASE20 FREE FLOAT PRICE INDEX FROM 28/3 TO 10/4/2022



GENERAL PRICE INDEX FROM 28/3 TO 10/4/2022

