

Daily Summary for Amman Stock Exchange

VALUE TRADED (JD)

	2021	2022	NET CHANGE	CHANGE (%)
Daily	5,909,340	4,714,875	-1,194,465	-20.21%
Cumulative (3/4-4/4)	17,142,633	12,828,914	-4,313,719	-25.16%
Cumulative (2/1-4/4)	542,716,109	399,776,955	-142,939,154	-26.34%

NO. OF SHARES TRADED

	2021	2022	NET CHANGE	CHANGE (%)
Daily	6,353,189	1,972,501	-4,380,688	-68.95%
Cumulative (3/4-4/4)	14,987,713	6,747,061	-8,240,652	-54.98%
Cumulative (2/1-4/4)	501,702,222	278,952,461	-222,749,761	-44.40%

NO. OF TRANSACTIONS

	2021	2022	NET CHANGE	CHANGE (%)
Daily	3,156	2,215	-941	-29.82%
Cumulative (3/4-4/4)	7,076	4,316	-2,760	-39.01%
Cumulative (2/1-4/4)	192,213	175,857	-16,356	-8.51%

SOME FINANCIAL RATIOS FOR THE ASE (4/4/2022)

SECTOR	P/E	P/BV	DIVIDEND YIELD (%)	TURNOVER (%)
FINANCIAL	13.577	0.815	5.033	0.031
SERVICES	15.990	1.200	3.777	0.030
INDUSTRY	10.248	2.297	4.886	0.039
OVERALL	12.014	1.131	4.934	0.032

STOCK PRICE INDEX WEIGHTED BY FREE FLOAT MARKET CAPITALIZATION (1999=1000)

	SUNDAY 03/04/2022	MONDAY 04/04/2022	% CHANGE	
			DAY BEFORE	YTD
GENERAL	2215.1	2219.6	0.21%	4.77%
FINANCIAL	2577.1	2565.6	-0.45%	-1.49%
SERVICES	1330.9	1336.6	0.42%	0.69%
INDUSTRY	4696.1	4777.6	1.74%	30.33%

STOCK PRICE INDEX WEIGHTED BY FREE FLOAT MARKET CAPITALIZATION ASE20 (2014=1000)

	1167.5	1171.8	0.37%	9.07%
--	--------	--------	-------	-------

Total Return Index ASETR (2021=1074)

	1193.5	1197.9	0.37%	11.49%
--	--------	--------	-------	--------

STOCK PRICE INDEX WEIGHTED BY MARKET CAPITALIZATION (1991=1000)

	SUNDAY 03/04/2022	MONDAY 04/04/2022	% CHANGE	
			DAY BEFORE	YTD
GENERAL	4266.5	4315.1	1.14%	7.74%
BANKS	6344.7	6368.9	0.38%	-3.01%
INSURANCE	1342.4	1332.7	-0.72%	0.33%
SERVICES	751.3	751.5	0.03%	-3.95%
INDUSTRY	5957.3	6103.8	2.46%	29.85%

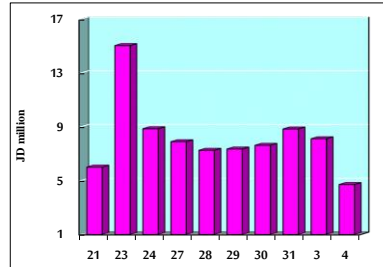
STOCK PRICE MARKET INDEX WEIGHTED BY FREE FLOAT MARKET CAP. (2012=1000)

	SUNDAY 03/04/2022	MONDAY 04/04/2022	% CHANGE	
			DAY BEFORE	YTD
FIRST MARKET	1229.7	1233.6	0.32%	7.75%
SECOND MARKET	804.4	797.2	-0.89%	-14.88%

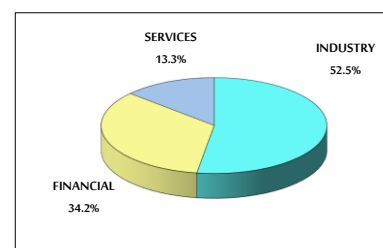
MARKET CAPITALIZATION (JD)

	16,414,899,748	16,587,582,447	1.05%	7.05%
--	----------------	----------------	-------	-------

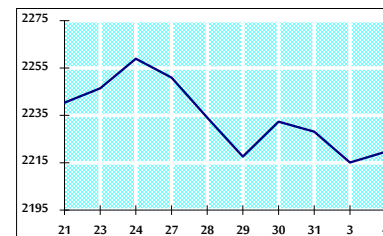
VALUE TRADED FROM 21/3 TO 4/4/2022



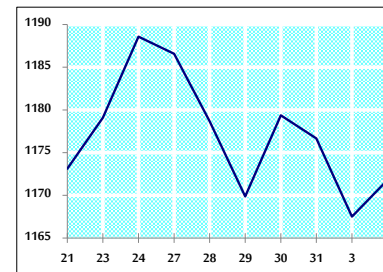
VALUE TRADED BY SECTOR MONDAY 4/4/2022



GENERAL FREE FLOAT PRICE INDEX FROM 21/3 TO 4/4/2022



ASE20 FREE FLOAT PRICE INDEX FROM 21/3 TO 4/4/2022



GENERAL PRICE INDEX FROM 21/3 TO 4/4/2022

