

Daily Summary for Amman Stock Exchange

VALUE TRADED (JD)

	2021	2022	NET CHANGE	CHANGE (%)
Daily	6,475,606	5,472,993	-1,002,613	-15.48%
Cumulative (1/2-13/2)	60,884,699	53,332,766	-7,551,933	-12.40%
Cumulative (2/1-13/2)	272,974,207	164,918,033	-108,056,174	-39.58%

NO. OF SHARES TRADED

	2021	2022	NET CHANGE	CHANGE (%)
Daily	6,239,551	3,621,107	-2,618,444	-41.97%
Cumulative (1/2-13/2)	59,665,270	39,833,880	-19,831,390	-33.24%
Cumulative (2/1-13/2)	259,316,499	126,389,873	-132,926,626	-51.26%

NO. OF TRANSACTIONS

	2021	2022	NET CHANGE	CHANGE (%)
Daily	3,133	2,888	-245	-7.82%
Cumulative (1/2-13/2)	27,388	23,186	-4,202	-15.34%
Cumulative (2/1-13/2)	92,524	83,174	-9,350	-10.11%

SOME FINANCIAL RATIOS FOR THE ASE (13/2/2022)

SECTOR	P/E	P/BV	DIVIDEND YIELD (%)	TURNOVER (%)
FINANCIAL	17.172	0.858	4.371	0.055
SERVICES	-	1.288	2.220	0.071
INDUSTRY	28.931	2.182	2.577	0.049
OVERALL	22.665	1.119	3.564	0.058

STOCK PRICE INDEX WEIGHTED BY FREE FLOAT MARKET CAPITALIZATION (1999=1000)

	THURSDAY 10/02/2022	SUNDAY 13/02/2022	% CHANGE	
			DAY BEFORE	YTD
GENERAL	2160.6	2164.6	0.19%	2.17%
FINANCIAL	2674.5	2668.7	-0.22%	2.47%
SERVICES	1355.4	1353.5	-0.14%	1.96%
INDUSTRY	3615.1	3691.5	2.11%	0.70%

STOCK PRICE INDEX WEIGHTED BY FREE FLOAT MARKET CAPITALIZATION ASE20 (2014=1000)

	1108.4	1110.4	0.18%	3.36%
--	--------	--------	-------	-------

STOCK PRICE INDEX WEIGHTED BY MARKET CAPITALIZATION (1991=1000)

	THURSDAY 10/02/2022	SUNDAY 13/02/2022	% CHANGE	
			DAY BEFORE	YTD
GENERAL	4033.9	4056.2	0.55%	1.27%
BANKS	6616.7	6575.1	-0.63%	0.13%
INSURANCE	1370.0	1377.8	0.57%	3.72%
SERVICES	795.4	793.2	-0.28%	1.38%
INDUSTRY	4703.3	4833.4	2.77%	2.83%

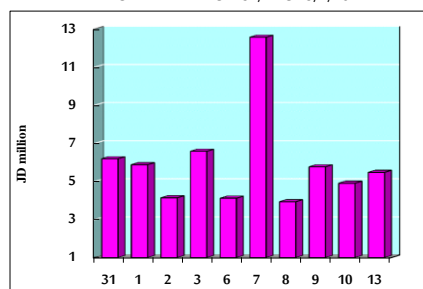
STOCK PRICE MARKET INDEX WEIGHTED BY FREE FLOAT MARKET CAP. (2012=1000)

	THURSDAY 10/02/2022	SUNDAY 13/02/2022	% CHANGE	
			DAY BEFORE	YTD
FIRST MARKET	1174.4	1176.9	0.21%	2.79%
SECOND MARKET	921.0	920.7	-0.03%	-1.70%

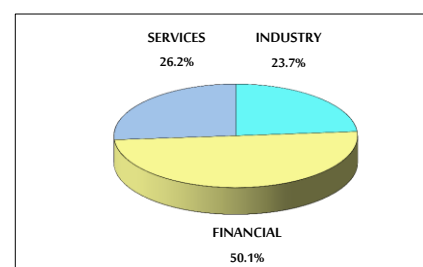
MARKET CAPITALIZATION (JD)

	15,573,215,479	15,654,747,783	0.52%	1.03%
--	----------------	----------------	-------	-------

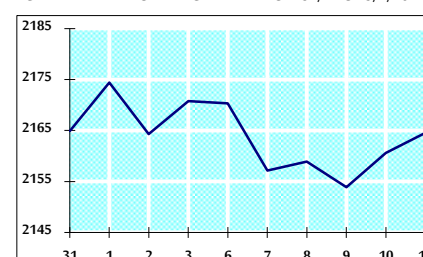
VALUE TRADED FROM 31/1 TO 13/2/2022



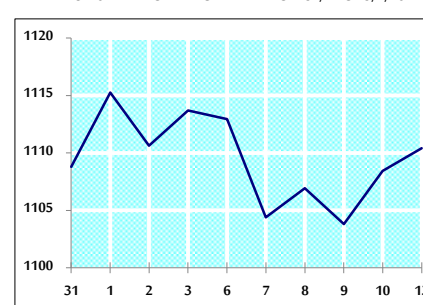
VALUE TRADED BY SECTOR SUNDAY 13/2/2022



GENERAL FREE FLOAT PRICE INDEX FROM 31/1 TO 13/2/2022



ASE20 FREE FLOAT PRICE INDEX FROM 31/1 TO 13/2/2022



GENERAL PRICE INDEX FROM 31/1 TO 13/2/2022

