

Daily Summary for Amman Stock Exchange

VALUE TRADED (JD)

	2020	2021	NET CHANGE	CHANGE (%)
Daily	4,623,201	3,280,638	-1,342,563	-29.04%
Cumulative (1/12-5/12)	18,033,286	13,437,744	-4,595,542	-25.48%
Cumulative (3/1-5/12)	885,655,621	1,818,389,886	932,734,265	105.32%

NO. OF SHARES TRADED

	2020	2021	NET CHANGE	CHANGE (%)
Daily	6,186,345	3,043,825	-3,142,520	-50.80%
Cumulative (1/12-5/12)	21,687,304	11,425,414	-10,261,890	-47.32%
Cumulative (3/1-5/12)	996,081,127	1,431,294,162	435,213,035	43.69%

NO. OF TRANSACTIONS

	2020	2021	NET CHANGE	CHANGE (%)
Daily	2,389	2,802	413	17.29%
Cumulative (1/12-5/12)	7,372	8,837	1,465	19.87%
Cumulative (3/1-5/12)	376,435	762,483	386,048	102.55%

SOME FINANCIAL RATIOS FOR THE ASE (5/12/2021)

SECTOR	P/E	P/BV	DIVIDEND YIELD (%)	TURNOVER (%)
FINANCIAL	33.804	0.839	3.389	0.037
SERVICES	-	1.267	2.255	0.044
INDUSTRY	27.587	2.067	2.709	0.122
OVERALL	36.419	1.087	3.057	0.048

STOCK PRICE INDEX WEIGHTED BY FREE FLOAT MARKET CAPITALIZATION (1999=1000)

	THURSDAY 02/12/2021	SUNDAY 05/12/2021	% CHANGE	
			DAY BEFORE	YTD
GENERAL	2066.3	2068.5	0.11%	24.82%
FINANCIAL	2518.5	2526.2	0.30%	16.33%
SERVICES	1326.0	1324.1	-0.14%	15.34%
INDUSTRY	3598.5	3590.8	-0.21%	69.40%

STOCK PRICE INDEX WEIGHTED BY FREE FLOAT MARKET CAPITALIZATION ASE20 (2014=1000)

	1040.6	1042.2	0.16%	29.23%
--	--------	--------	-------	--------

STOCK PRICE INDEX WEIGHTED BY MARKET CAPITALIZATION (1991=1000)

	THURSDAY 02/12/2021	SUNDAY 05/12/2021	% CHANGE	
			DAY BEFORE	YTD
GENERAL	3909.0	3908.6	-0.01%	28.17%
BANKS	6317.2	6323.7	0.10%	16.88%
INSURANCE	1360.8	1361.2	0.03%	3.97%
SERVICES	791.0	792.9	0.25%	12.59%
INDUSTRY	4612.3	4598.7	-0.29%	63.19%

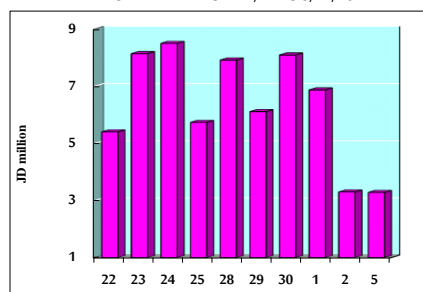
STOCK PRICE MARKET INDEX WEIGHTED BY FREE FLOAT MARKET CAP. (2012=1000)

	THURSDAY 02/12/2021	SUNDAY 05/12/2021	% CHANGE	
			DAY BEFORE	YTD
FIRST MARKET	1112.9	1114.3	0.12%	28.32%
SECOND MARKET	935.1	937.7	0.28%	7.62%

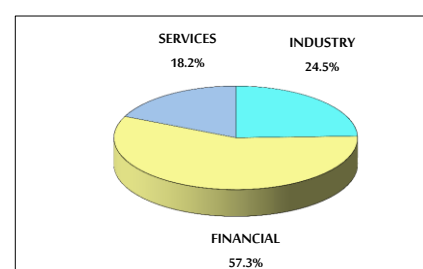
MARKET CAPITALIZATION (JD)

	15,160,329,434	15,159,109,919	-0.01%	17.44%
--	----------------	----------------	--------	--------

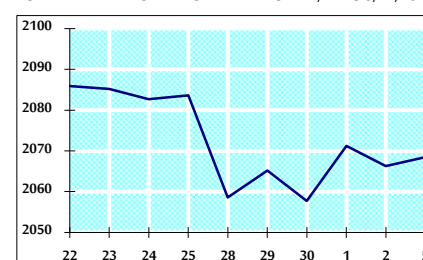
VALUE TRADED FROM 22/11 TO 5/12/2021



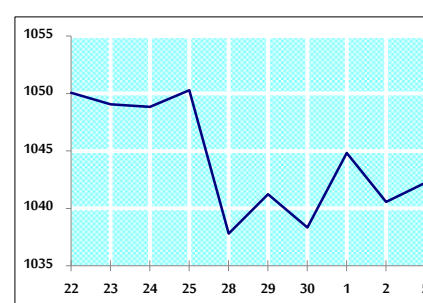
VALUE TRADED BY SECTOR SUNDAY 5/12/2021



GENERAL FREE FLOAT PRICE INDEX FROM 22/11 TO 5/12/2021



ASE20 FREE FLOAT PRICE INDEX FROM 22/11 TO 5/12/2021



GENERAL PRICE INDEX FROM 22/11 TO 5/12/2021

