

## Daily Summary for Amman Stock Exchange

### VALUE TRADED (JD)

	2020	2021	NET CHANGE	CHANGE (%)
Daily	3,367,595	5,487,408	2,119,813	62.95%
Cumulative (1/11-10/11)	27,176,657	43,666,719	16,490,062	60.68%
Cumulative (3/1-10/11)	817,269,367	1,714,776,679	897,507,312	109.82%

### NO. OF SHARES TRADED

	2020	2021	NET CHANGE	CHANGE (%)
Daily	3,608,817	4,452,754	843,937	23.39%
Cumulative (1/11-10/11)	34,125,038	35,588,905	1,463,867	4.29%
Cumulative (3/1-10/11)	910,189,061	1,342,265,092	432,076,031	47.47%

### NO. OF TRANSACTIONS

	2020	2021	NET CHANGE	CHANGE (%)
Daily	1,493	3,406	1,913	128.13%
Cumulative (1/11-10/11)	11,285	23,928	12,643	112.03%
Cumulative (3/1-10/11)	346,038	701,265	355,227	102.66%

### SOME FINANCIAL RATIOS FOR THE ASE (10/11/2021)

SECTOR	P/E	P/BV	DIVIDEND YIELD (%)	TURNOVER (%)
FINANCIAL	34.385	0.853	3.332	0.043
SERVICES	-	1.277	2.238	0.122
INDUSTRY	27.876	2.089	2.681	0.143
OVERALL	36.971	1.103	3.011	0.071

### STOCK PRICE INDEX WEIGHTED BY FREE FLOAT MARKET CAPITALIZATION (1999=1000)

	TUESDAY 09/11/2021	WEDNESDAY 10/11/2021	% CHANGE	
			DAY BEFORE	YTD
GENERAL	2079.9	2091.8	0.57%	26.22%
FINANCIAL	2541.6	2548.8	0.28%	17.37%
SERVICES	1327.8	1344.3	1.24%	17.10%
INDUSTRY	3585.3	3607.0	0.60%	70.16%

### STOCK PRICE INDEX WEIGHTED BY FREE FLOAT MARKET CAPITALIZATION ASE20 (2014=1000)

	1049.9	1055.3	0.51%	30.86%
--	--------	--------	-------	--------

### STOCK PRICE INDEX WEIGHTED BY MARKET CAPITALIZATION (1991=1000)

	TUESDAY 09/11/2021	WEDNESDAY 10/11/2021	% CHANGE	
			DAY BEFORE	YTD
GENERAL	3955.4	3967.9	0.32%	30.11%
BANKS	6417.2	6438.1	0.33%	18.99%
INSURANCE	1384.9	1386.7	0.13%	5.92%
SERVICES	799.6	798.6	-0.13%	13.40%
INDUSTRY	4636.8	4659.8	0.49%	65.36%

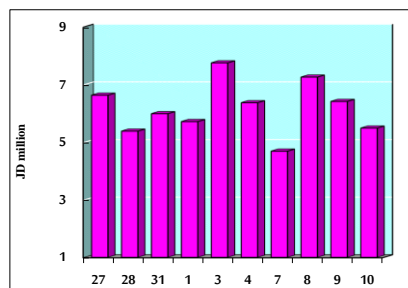
### STOCK PRICE MARKET INDEX WEIGHTED BY FREE FLOAT MARKET CAP. (2012=1000)

	TUESDAY 09/11/2021	WEDNESDAY 10/11/2021	% CHANGE	
			DAY BEFORE	YTD
FIRST MARKET	1118.9	1126.4	0.67%	29.72%
SECOND MARKET	942.6	945.3	0.29%	8.48%

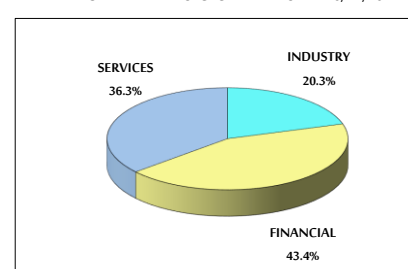
### MARKET CAPITALIZATION (JD)

	15,319,016,951	15,366,887,859	0.31%	19.05%
--	----------------	----------------	-------	--------

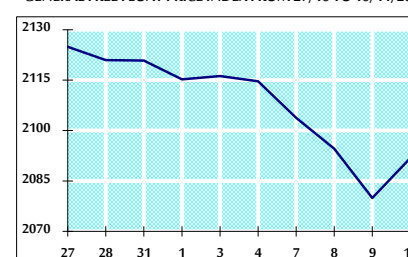
### VALUE TRADED FROM 27/10 TO 10/11/2021



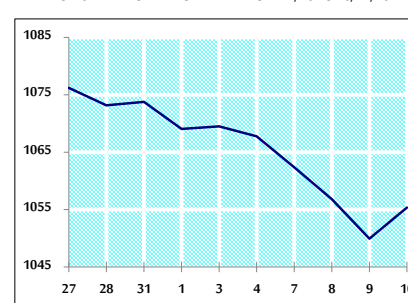
### VALUE TRADED BY SECTOR WEDNESDAY 10/11/2021



### GENERAL FREE FLOAT PRICE INDEX FROM 27/10 TO 10/11/2021



### ASE20 FREE FLOAT PRICE INDEX FROM 27/10 TO 10/11/2021



### GENERAL PRICE INDEX FROM 27/10 TO 10/11/2021

