

## Daily Summary for Amman Stock Exchange

### VALUE TRADED (JD)

	2020	2021	NET CHANGE	CHANGE (%)
Daily	2,434,243	6,411,201	3,976,958	163.38%
Cumulative (1/11-9/11)	23,809,062	38,179,311	14,370,249	60.36%
Cumulative (3/1-9/11)	813,901,772	1,709,289,271	895,387,499	110.01%

### NO. OF SHARES TRADED

	2020	2021	NET CHANGE	CHANGE (%)
Daily	3,325,062	4,383,209	1,058,147	31.82%
Cumulative (1/11-9/11)	30,516,221	31,136,151	619,930	2.03%
Cumulative (3/1-9/11)	906,580,244	1,337,812,338	431,232,094	47.57%

### NO. OF TRANSACTIONS

	2020	2021	NET CHANGE	CHANGE (%)
Daily	1,185	3,132	1,947	164.30%
Cumulative (1/11-9/11)	9,792	20,522	10,730	109.58%
Cumulative (3/1-9/11)	344,545	697,859	353,314	102.55%

### SOME FINANCIAL RATIOS FOR THE ASE (9/11/2021)

SECTOR	P/E	P/BV	DIVIDEND YIELD (%)	TURNOVER (%)
FINANCIAL	34.308	0.851	3.340	0.046
SERVICES	-	1.271	2.248	0.130
INDUSTRY	27.761	2.080	2.692	0.101
OVERALL	36.855	1.100	3.020	0.070

### STOCK PRICE INDEX WEIGHTED BY FREE FLOAT MARKET CAPITALIZATION (1999=1000)

	MONDAY 08/11/2021	TUESDAY 09/11/2021	% CHANGE	
			DAY BEFORE	YTD
GENERAL	2094.6	2079.9	-0.70%	25.51%
FINANCIAL	2557.2	2541.6	-0.61%	17.03%
SERVICES	1342.2	1327.8	-1.07%	15.66%
INDUSTRY	3595.6	3585.3	-0.29%	69.14%

### STOCK PRICE INDEX WEIGHTED BY FREE FLOAT MARKET CAPITALIZATION ASE20 (2014=1000)

	1056.8	1049.9	-0.65%	30.19%
--	--------	--------	--------	--------

### STOCK PRICE INDEX WEIGHTED BY MARKET CAPITALIZATION (1991=1000)

	MONDAY 08/11/2021	TUESDAY 09/11/2021	% CHANGE	
			DAY BEFORE	YTD
GENERAL	3975.6	3955.4	-0.51%	29.70%
BANKS	6447.8	6417.2	-0.47%	18.60%
INSURANCE	1404.9	1384.9	-1.42%	5.79%
SERVICES	805.0	799.6	-0.66%	13.55%
INDUSTRY	4656.8	4636.8	-0.43%	64.54%

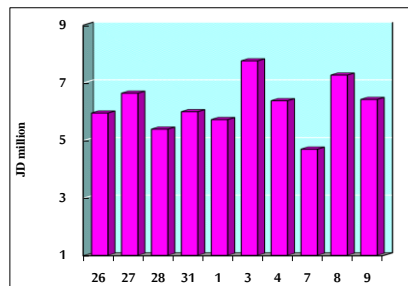
### STOCK PRICE MARKET INDEX WEIGHTED BY FREE FLOAT MARKET CAP. (2012=1000)

	MONDAY 08/11/2021	TUESDAY 09/11/2021	% CHANGE	
			DAY BEFORE	YTD
FIRST MARKET	1128.0	1118.9	-0.80%	28.85%
SECOND MARKET	941.8	942.6	0.08%	8.17%

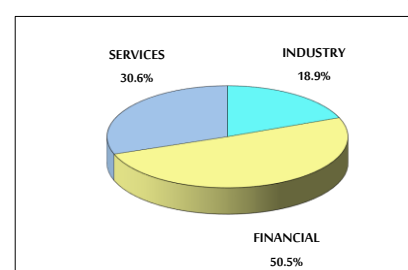
### MARKET CAPITALIZATION (JD)

	15,393,995,681	15,319,016,951	-0.49%	18.68%
--	----------------	----------------	--------	--------

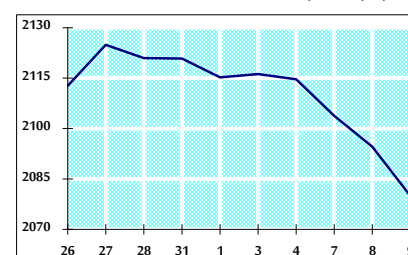
### VALUE TRADED FROM 26/10 TO 9/11/2021



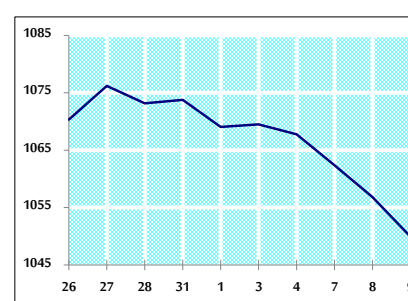
### VALUE TRADED BY SECTOR TUESDAY 9/11/2021



### GENERAL FREE FLOAT PRICE INDEX FROM 26/10 TO 9/11/2021



### ASE20 FREE FLOAT PRICE INDEX FROM 26/10 TO 9/11/2021



### GENERAL PRICE INDEX FROM 26/10 TO 9/11/2021

