

Daily Summary for Amman Stock Exchange

VALUE TRADED (JD)

	2020	2021	NET CHANGE	CHANGE (%)
Daily	5,864,168	5,730,232	-133,936	-2.28%
Cumulative (1/11-25/11)	73,028,620	111,744,123	38,715,503	53.01%
Cumulative (3/1-25/11)	863,121,330	1,782,854,083	919,732,753	106.56%

NO. OF SHARES TRADED

	2020	2021	NET CHANGE	CHANGE (%)
Daily	6,377,693	5,520,319	-857,374	-13.44%
Cumulative (1/11-25/11)	94,211,547	96,360,220	2,148,673	2.28%
Cumulative (3/1-25/11)	970,275,570	1,403,036,407	432,760,837	44.60%

NO. OF TRANSACTIONS

	2020	2021	NET CHANGE	CHANGE (%)
Daily	2,153	3,754	1,601	74.36%
Cumulative (1/11-25/11)	32,203	64,282	32,079	99.61%
Cumulative (3/1-25/11)	366,956	741,619	374,663	102.10%

SOME FINANCIAL RATIOS FOR THE ASE (25/11/2021)

SECTOR	P/E	P/BV	DIVIDEND YIELD (%)	TURNOVER (%)
FINANCIAL	34.279	0.851	3.342	0.079
SERVICES	-	1.272	2.247	0.094
INDUSTRY	27.970	2.096	2.672	0.129
OVERALL	36.903	1.101	3.016	0.088

STOCK PRICE INDEX WEIGHTED BY FREE FLOAT MARKET CAPITALIZATION (1999=1000)

	WEDNESDAY 24/11/2021	THURSDAY 25/11/2021	% CHANGE	
			DAY BEFORE	YTD
GENERAL	2082.7	2083.6	0.04%	25.73%
FINANCIAL	2528.1	2537.6	0.38%	16.85%
SERVICES	1343.7	1335.9	-0.58%	16.37%
INDUSTRY	3641.4	3635.8	-0.15%	71.52%

STOCK PRICE INDEX WEIGHTED BY FREE FLOAT MARKET CAPITALIZATION ASE20 (2014=1000)

	1048.8	1050.3	0.14%	30.23%
--	--------	--------	-------	--------

STOCK PRICE INDEX WEIGHTED BY MARKET CAPITALIZATION (1991=1000)

	WEDNESDAY 24/11/2021	THURSDAY 25/11/2021	% CHANGE	
			DAY BEFORE	YTD
GENERAL	3949.7	3960.6	0.28%	29.87%
BANKS	6386.0	6425.6	0.62%	18.76%
INSURANCE	1352.5	1364.5	0.89%	4.22%
SERVICES	793.2	791.8	-0.17%	12.43%
INDUSTRY	4674.9	4670.5	-0.09%	65.74%

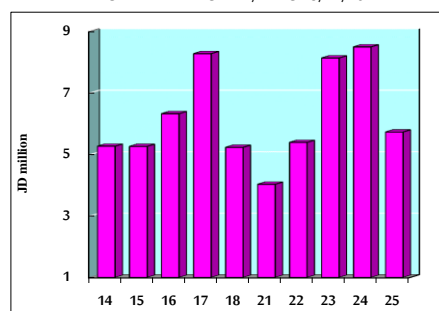
STOCK PRICE MARKET INDEX WEIGHTED BY FREE FLOAT MARKET CAP. (2012=1000)

	WEDNESDAY 24/11/2021	THURSDAY 25/11/2021	% CHANGE	
			DAY BEFORE	YTD
FIRST MARKET	1121.8	1121.7	0.00%	29.17%
SECOND MARKET	943.6	944.2	0.05%	8.35%

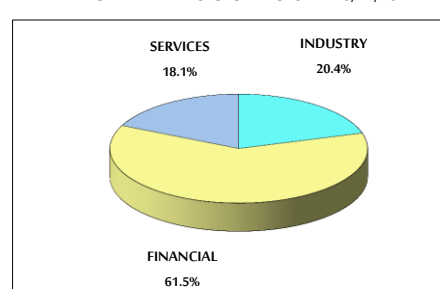
MARKET CAPITALIZATION (JD)

	15,305,372,305	15,346,682,363	0.27%	18.89%
--	----------------	----------------	-------	--------

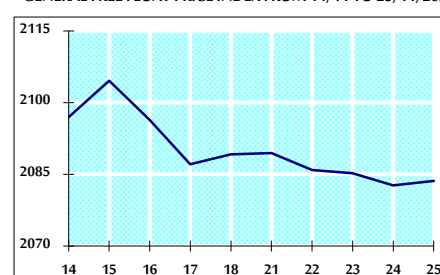
VALUE TRADED FROM 14/11 TO 25/11/2021



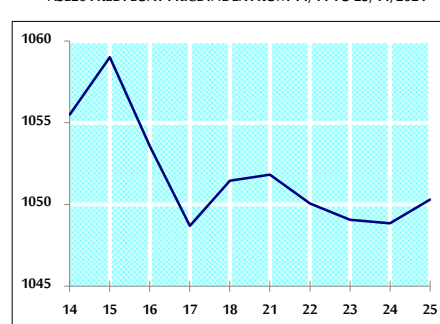
VALUE TRADED BY SECTOR THURSDAY 25/11/2021



GENERAL FREE FLOAT PRICE INDEX FROM 14/11 TO 25/11/2021



ASE20 FREE FLOAT PRICE INDEX FROM 14/11 TO 25/11/2021



GENERAL PRICE INDEX FROM 14/11 TO 25/11/2021

