

Daily Summary for Amman Stock Exchange

VALUE TRADED (JD)

	2020	2021	NET CHANGE	CHANGE (%)
Daily	3,535,853	5,515,895	1,980,042	56.00%
Cumulative (1/8-16/8)	55,252,840	71,749,879	16,497,039	29.86%
Cumulative (3/1-16/8)	572,359,994	1,325,167,782	752,807,788	131.53%

NO. OF SHARES TRADED

	2020	2021	NET CHANGE	CHANGE (%)
Daily	4,502,823	5,128,630	625,807	13.90%
Cumulative (1/8-16/8)	62,208,144	53,608,529	-8,599,615	-13.82%
Cumulative (3/1-16/8)	581,374,568	1,043,464,827	462,090,259	79.48%

NO. OF TRANSACTIONS

	2020	2021	NET CHANGE	CHANGE (%)
Daily	1,824	3,166	1,342	73.57%
Cumulative (1/8-16/8)	23,061	29,979	6,918	30.00%
Cumulative (3/1-16/8)	229,470	511,755	282,285	123.02%

SOME FINANCIAL RATIOS FOR THE ASE (16/8/2021)

SECTOR	P/E	P/BV	DIVIDEND YIELD (%)	TURNOVER (%)
FINANCIAL	33.369	0.829	3.430	0.057
SERVICES	-	1.219	2.276	0.154
INDUSTRY	25.486	2.040	2.814	0.095
OVERALL	36.163	1.061	3.106	0.082

STOCK PRICE INDEX WEIGHTED BY FREE FLOAT MARKET CAPITALIZATION (1999=1000)

	SUNDAY 15/08/2021	MONDAY 16/08/2021	% CHANGE	
			DAY BEFORE	YTD
GENERAL	1985.7	2001.4	0.79%	20.77%
FINANCIAL	2437.8	2453.6	0.65%	12.98%
SERVICES	1288.1	1292.1	0.31%	12.55%
INDUSTRY	3337.1	3393.8	1.70%	60.11%

STOCK PRICE INDEX WEIGHTED BY FREE FLOAT MARKET CAPITALIZATION ASE20 (2014=1000)

	1008.0	1015.5	0.74%	25.91%
--	--------	--------	-------	--------

STOCK PRICE INDEX WEIGHTED BY MARKET CAPITALIZATION (1991=1000)

	SUNDAY 15/08/2021	MONDAY 16/08/2021	% CHANGE	
			DAY BEFORE	YTD
GENERAL	3800.0	3834.0	0.89%	25.72%
BANKS	6248.7	6293.5	0.72%	16.32%
INSURANCE	1245.5	1249.0	0.28%	-4.60%
SERVICES	750.8	757.3	0.87%	7.53%
INDUSTRY	4422.0	4474.6	1.19%	58.79%

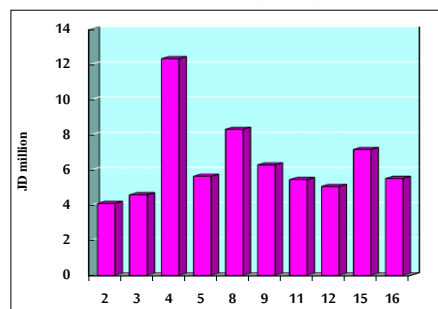
STOCK PRICE MARKET INDEX WEIGHTED BY FREE FLOAT MARKET CAP. (2012=1000)

	SUNDAY 15/08/2021	MONDAY 16/08/2021	% CHANGE	
			DAY BEFORE	YTD
FIRST MARKET	1067.0	1074.7	0.73%	23.76%
SECOND MARKET	902.6	913.4	1.20%	4.83%

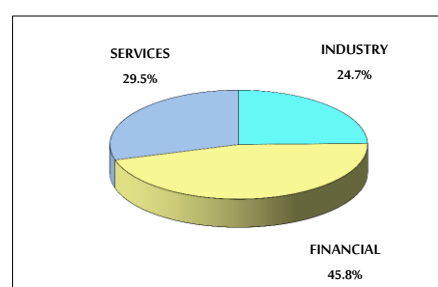
MARKET CAPITALIZATION (JD)

	14,732,610,048	14,853,282,932	0.82%	15.07%
--	----------------	----------------	-------	--------

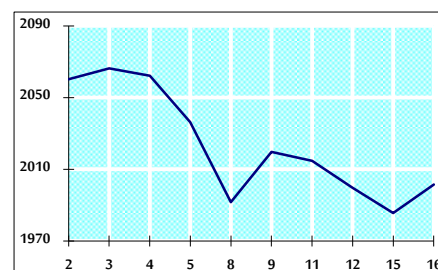
VALUE TRADED FROM 2/8 TO 16/8/2021



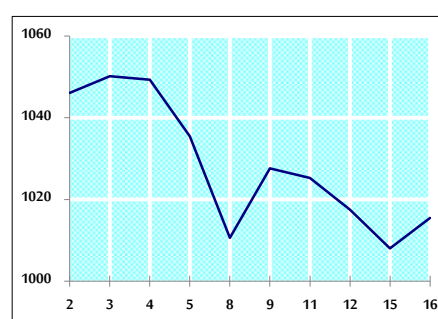
VALUE TRADED BY SECTOR MONDAY 16/8/2021



GENERAL FREE FLOAT PRICE INDEX FROM 2/8 TO 16/8/2021



ASE20 FREE FLOAT PRICE INDEX FROM 2/8 TO 16/8/2021



GENERAL PRICE INDEX FROM 2/8 TO 16/8/2021

