

Daily Summary for Amman Stock Exchange

VALUE TRADED (JD)

| | 2020 | 2021 | NET CHANGE | CHANGE (%) |
|----------------------|-------------|-------------|-------------|------------|
| Daily | 4,377,159 | 6,475,606 | 2,098,447 | 47.94% |
| Cumulative(1/2-11/2) | 63,839,879 | 60,884,699 | -2,955,180 | -4.63% |
| Cumulative(3/1-11/2) | 168,869,736 | 272,974,207 | 104,104,471 | 61.65% |

NO. OF SHARES TRADED

| | 2020 | 2021 | NET CHANGE | CHANGE (%) |
|----------------------|-------------|-------------|-------------|------------|
| Daily | 4,712,932 | 6,239,551 | 1,526,619 | 32.39% |
| Cumulative(1/2-11/2) | 58,434,300 | 59,665,270 | 1,230,970 | 2.11% |
| Cumulative(3/1-11/2) | 151,532,904 | 259,316,499 | 107,783,595 | 71.13% |

NO. OF TRANSACTIONS

| | 2020 | 2021 | NET CHANGE | CHANGE (%) |
|----------------------|--------|--------|------------|------------|
| Daily | 2,201 | 3,133 | 932 | 42.34% |
| Cumulative(1/2-11/2) | 21,303 | 27,388 | 6,085 | 28.56% |
| Cumulative(3/1-11/2) | 65,457 | 92,524 | 27,067 | 41.35% |

SOME FINANCIAL RATIOS FOR THE ASE (11/2/2021)

| SECTOR | P/E | P/BV | DIVIDEND YIELD (%) | TURNOVER (%) |
|-----------|--------|-------|--------------------|--------------|
| FINANCIAL | 19.146 | 0.748 | 1.854 | 0.087 |
| SERVICES | 12.191 | 1.064 | 4.953 | 0.089 |
| INDUSTRY | 19.678 | 1.557 | 3.168 | 0.170 |
| OVERALL | 17.281 | 0.900 | 2.773 | 0.098 |

STOCK PRICE INDEX WEIGHTED BY FREE FLOAT MARKET CAPITALIZATION (1999=1000)

| | WEDNESDAY 10/02/2021 | THURSDAY 11/02/2021 | % CHANGE | |
|-----------|-------------------------|------------------------|------------|--------|
| | | | DAY BEFORE | YTD |
| GENERAL | 1734.3 | 1735.0 | 0.04% | 4.70% |
| FINANCIAL | 2252.4 | 2250.3 | -0.10% | 3.62% |
| SERVICES | 1153.9 | 1154.7 | 0.07% | 0.58% |
| INDUSTRY | 2441.2 | 2454.0 | 0.53% | 15.77% |

STOCK PRICE INDEX WEIGHTED BY FREE FLOAT MARKET CAPITALIZATION ASE20 (2014=1000)

| | | | | |
|--|-------|-------|-------|-------|
| | 848.5 | 849.1 | 0.07% | 5.28% |
|--|-------|-------|-------|-------|

STOCK PRICE INDEX WEIGHTED BY MARKET CAPITALIZATION (1991=1000)

| | WEDNESDAY 10/02/2021 | THURSDAY 11/02/2021 | % CHANGE | |
|-----------|-------------------------|------------------------|------------|--------|
| | | | DAY BEFORE | YTD |
| GENERAL | 3258.7 | 3259.3 | 0.02% | 6.88% |
| BANKS | 5488.5 | 5490.6 | 0.04% | 1.48% |
| INSURANCE | 1270.7 | 1270.0 | -0.05% | -2.99% |
| SERVICES | 723.6 | 721.9 | -0.22% | 2.51% |
| INDUSTRY | 3423.2 | 3426.9 | 0.11% | 21.60% |

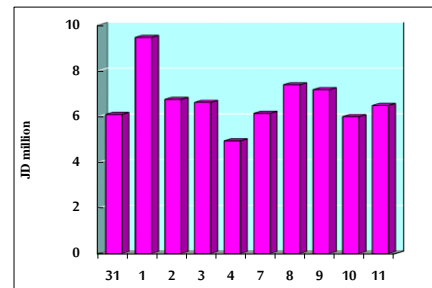
STOCK PRICE MARKET INDEX WEIGHTED BY FREE FLOAT MARKET CAP. (2012=1000)

| | WEDNESDAY 10/02/2021 | THURSDAY 11/02/2021 | % CHANGE | |
|---------------|-------------------------|------------------------|------------|-------|
| | | | DAY BEFORE | YTD |
| FIRST MARKET | 909.7 | 910.7 | 0.10% | 4.87% |
| SECOND MARKET | 914.2 | 912.1 | -0.23% | 4.67% |

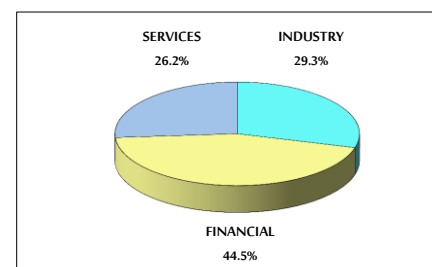
MARKET CAPITALIZATION (JD)

| | | | | |
|--|----------------|----------------|-------|-------|
| | 13,675,106,043 | 13,676,531,299 | 0.01% | 5.96% |
|--|----------------|----------------|-------|-------|

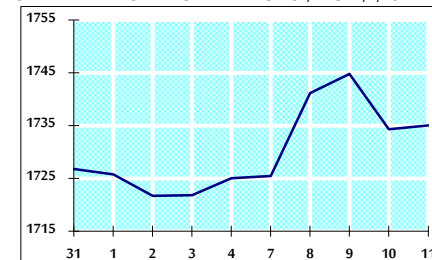
VALUE TRADED FROM 31/1 TO 11/2/2021



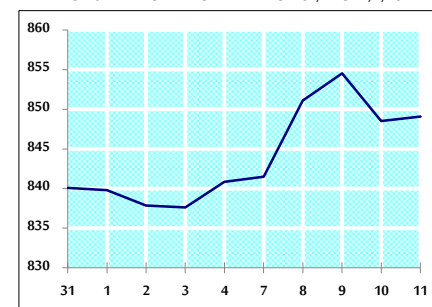
VALUE TRADED BY SECTOR THURSDAY 11/2/2021



GENERAL FREE FLOAT PRICE INDEX FROM 31/1 TO 11/2/2021



ASE20 FREE FLOAT PRICE INDEX FROM 31/1 TO 11/2/2021



GENERAL PRICE INDEX FROM 31/1 TO 11/2/2021

