

Daily Summary for Amman Stock Exchange

VALUE TRADED (JD)

	2019	2020	NET CHANGE	CHANGE (%)
Daily	4,043,264	2,434,243	-1,609,021	-39.80%
Cumulative(1/11-8/11)	35,536,371	23,809,062	-11,727,309	-33.00%
Cumulative(2/1-8/11)	1,372,593,930	813,901,772	-558,692,158	-40.70%

NO. OF SHARES TRADED

	2019	2020	NET CHANGE	CHANGE (%)
Daily	3,764,392	3,325,062	-439,330	-11.67%
Cumulative(1/11-8/11)	33,730,159	30,516,221	-3,213,938	-9.53%
Cumulative(2/1-8/11)	1,055,830,114	906,580,244	-149,249,870	-14.14%

NO. OF TRANSACTIONS

	2019	2020	NET CHANGE	CHANGE (%)
Daily	1,843	1,185	-658	-35.70%
Cumulative(1/11-8/11)	10,288	9,792	-496	-4.82%
Cumulative(2/1-8/11)	441,136	344,545	-96,591	-21.90%

SOME FINANCIAL RATIOS FOR THE ASE (8/11/2020)

SECTOR	P/E	P/BV	DIVIDEND YIELD (%)	TURNOVER (%)
FINANCIAL	8.899	0.721	0.174	0.039
SERVICES	11.095	0.964	5.514	0.097
INDUSTRY	15.167	1.134	4.217	0.051
OVERALL	9.409	0.801	1.931	0.052

STOCK PRICE INDEX WEIGHTED BY FREE FLOAT MARKET CAPITALIZATION (1999=1000)

	THURSDAY 05/11/2020	SUNDAY 08/11/2020	% CHANGE	
			DAY BEFORE	YTD
GENERAL	1539.3	1543.6	0.28%	-14.96%
FINANCIAL	2052.5	2062.8	0.50%	-15.80%
SERVICES	1060.4	1055.4	-0.47%	-18.38%
INDUSTRY	1897.4	1904.9	0.39%	2.58%

STOCK PRICE INDEX WEIGHTED BY FREE FLOAT MARKET CAPITALIZATION ASE20 (2014=1000)

	745.4	747.8	0.32%	-16.07%
--	-------	-------	-------	---------

STOCK PRICE INDEX WEIGHTED BY MARKET CAPITALIZATION (1991=1000)

	THURSDAY 05/11/2020	SUNDAY 08/11/2020	% CHANGE	
			DAY BEFORE	YTD
GENERAL	2858.5	2873.1	0.51%	-18.23%
BANKS	5213.9	5252.7	0.75%	-25.97%
INSURANCE	1285.9	1285.4	-0.03%	0.23%
SERVICES	664.1	663.2	-0.13%	-9.85%
INDUSTRY	2469.9	2480.4	0.43%	-5.08%

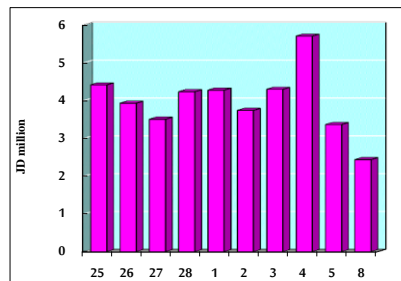
STOCK PRICE MARKET INDEX WEIGHTED BY FREE FLOAT MARKET CAP. (2012=1000)

	THURSDAY 05/11/2020	SUNDAY 08/11/2020	% CHANGE	
			DAY BEFORE	YTD
FIRST MARKET	804.5	806.6	0.27%	-15.61%
SECOND MARKET	815.6	817.9	0.28%	-2.17%

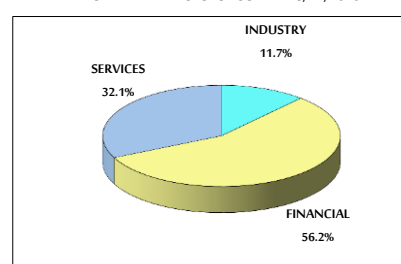
MARKET CAPITALIZATION (JD)

	12,198,997,573	12,251,491,460	0.43%	-17.86%
--	----------------	----------------	-------	---------

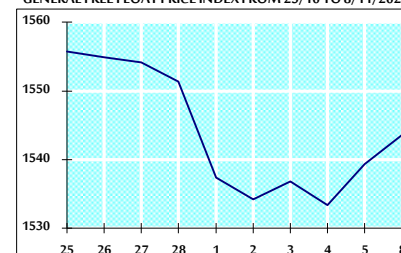
VALUE TRADED FROM 25/10 TO 8/11/2020



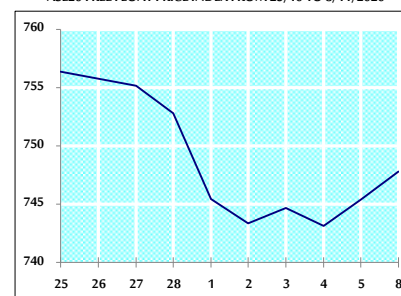
VALUE TRADED BY SECTOR SUNDAY 8/11/2020



GENERAL FREE FLOAT PRICE INDEX FROM 25/10 TO 8/11/2020



ASE20 FREE FLOAT PRICE INDEX FROM 25/10 TO 8/11/2020



GENERAL PRICE INDEX FROM 25/10 TO 8/11/2020

