

Daily Summary for Amman Stock Exchange

VALUE TRADED (JD)

	2019	2020	NET CHANGE	CHANGE (%)
Daily	5,641,492	3,362,564	-2,278,928	-40.40%
Cumulative(1/11-5/11)	31,493,107	21,374,819	-10,118,288	-32.13%
Cumulative(2/1-5/11)	1,368,550,666	811,467,529	-557,083,137	-40.71%

NO. OF SHARES TRADED

	2019	2020	NET CHANGE	CHANGE (%)
Daily	5,625,832	6,583,249	957,417	17.02%
Cumulative(1/11-5/11)	29,965,767	27,191,159	-2,774,608	-9.26%
Cumulative(2/1-5/11)	1,052,065,722	903,255,182	-148,810,540	-14.14%

NO. OF TRANSACTIONS

	2019	2020	NET CHANGE	CHANGE (%)
Daily	1,929	1,624	-305	-15.81%
Cumulative(1/11-5/11)	8,445	8,607	162	1.92%
Cumulative(2/1-5/11)	439,293	343,360	-95,933	-21.84%

SOME FINANCIAL RATIOS FOR THE ASE (5/11/2020)

SECTOR	P/E	P/BV	DIVIDEND YIELD (%)	TURNOVER (%)
FINANCIAL	8.843	0.717	0.175	0.039
SERVICES	11.118	0.966	5.502	0.111
INDUSTRY	15.094	1.129	4.238	0.436
OVERALL	9.361	0.797	1.941	0.103

STOCK PRICE INDEX WEIGHTED BY FREE FLOAT MARKET CAPITALIZATION (1999=1000)

	WEDNESDAY 04/11/2020	THURSDAY 05/11/2020	% CHANGE	
			DAY BEFORE	YTD
GENERAL	1533.4	1539.3	0.39%	-15.20%
FINANCIAL	2047.8	2052.5	0.23%	-16.22%
SERVICES	1049.8	1060.4	1.02%	-17.99%
INDUSTRY	1902.9	1897.4	-0.29%	2.18%

STOCK PRICE INDEX WEIGHTED BY FREE FLOAT MARKET CAPITALIZATION ASE20 (2014=1000)

	743.1	745.4	0.30%	-16.34%
--	-------	-------	-------	---------

STOCK PRICE INDEX WEIGHTED BY MARKET CAPITALIZATION (1991=1000)

	WEDNESDAY 04/11/2020	THURSDAY 05/11/2020	% CHANGE	
			DAY BEFORE	YTD
GENERAL	2862.7	2858.5	-0.15%	-18.65%
BANKS	5212.5	5213.9	0.03%	-26.52%
INSURANCE	1281.1	1285.9	0.37%	0.26%
SERVICES	661.2	664.1	0.45%	-9.73%
INDUSTRY	2495.8	2469.9	-1.04%	-5.48%

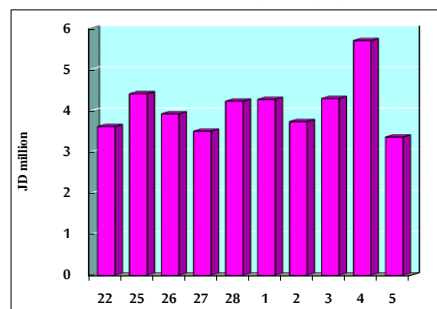
STOCK PRICE MARKET INDEX WEIGHTED BY FREE FLOAT MARKET CAP. (2012=1000)

	WEDNESDAY 04/11/2020	THURSDAY 05/11/2020	% CHANGE	
			DAY BEFORE	YTD
FIRST MARKET	801.3	804.5	0.40%	-15.84%
SECOND MARKET	812.3	815.6	0.41%	-2.45%

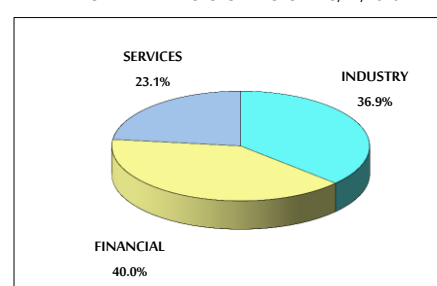
MARKET CAPITALIZATION (JD)

	12,214,010,005	12,198,997,573	-0.12%	-18.21%
--	----------------	----------------	--------	---------

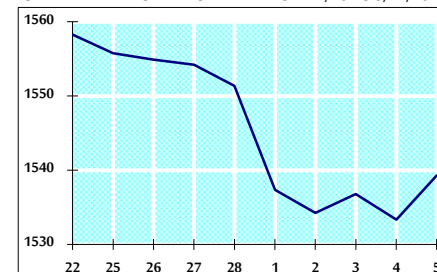
VALUE TRADED FROM 22/10 TO 5/11/2020



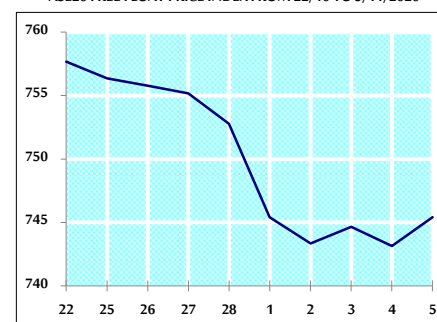
VALUE TRADED BY SECTOR THURSDAY 5/11/2020



GENERAL FREE FLOAT PRICE INDEX FROM 22/10 TO 5/11/2020



ASE20 FREE FLOAT PRICE INDEX FROM 22/10 TO 5/11/2020



GENERAL PRICE INDEX FROM 22/10 TO 5/11/2020

