

Daily Summary for Amman Stock Exchange

VALUE TRADED (JD)

	2019	2020	NET CHANGE	CHANGE (%)
Daily	4,160,711	3,738,183	-422,528	-10.16%
Cumulative(1/11-2/11)	8,155,040	8,012,765	-142,275	-1.74%
Cumulative(2/1-2/11)	1,345,212,599	798,105,475	-547,107,124	-40.67%

NO. OF SHARES TRADED

	2019	2020	NET CHANGE	CHANGE (%)
Daily	3,393,215	4,217,274	824,059	24.29%
Cumulative(1/11-2/11)	8,061,338	9,376,136	1,314,798	16.31%
Cumulative(2/1-2/11)	1,030,161,293	885,440,159	-144,721,134	-14.05%

NO. OF TRANSACTIONS

	2019	2020	NET CHANGE	CHANGE (%)
Daily	1,663	1,411	-252	-15.15%
Cumulative(1/11-2/11)	3,232	3,109	-123	-3.81%
Cumulative(2/1-2/11)	434,080	337,862	-96,218	-22.17%

SOME FINANCIAL RATIOS FOR THE ASE (2/11/2020)

SECTOR	P/E	P/BV	DIVIDEND YIELD (%)	TURNOVER (%)
FINANCIAL	8.784	0.712	0.177	0.049
SERVICES	11.120	0.966	5.501	0.039
INDUSTRY	15.250	1.141	4.194	0.199
OVERALL	9.342	0.796	1.945	0.066

STOCK PRICE INDEX WEIGHTED BY FREE FLOAT MARKET CAPITALIZATION (1999=1000)

	SUNDAY 01/11/2020	MONDAY 02/11/2020	% CHANGE	
			DAY BEFORE	YTD
GENERAL	1537.3	1534.3	-0.20%	-15.48%
FINANCIAL	2039.8	2038.8	-0.05%	-16.78%
SERVICES	1075.3	1068.4	-0.65%	-17.38%
INDUSTRY	1891.3	1890.8	-0.02%	1.82%

STOCK PRICE INDEX WEIGHTED BY FREE FLOAT MARKET CAPITALIZATION ASE20 (2014=1000)

	745.4	743.3	-0.28%	-16.57%
--	-------	-------	--------	---------

STOCK PRICE INDEX WEIGHTED BY MARKET CAPITALIZATION (1991=1000)

	SUNDAY 01/11/2020	MONDAY 02/11/2020	% CHANGE	
			DAY BEFORE	YTD
GENERAL	2851.8	2852.6	0.03%	-18.82%
BANKS	5166.0	5172.4	0.12%	-27.10%
INSURANCE	1280.9	1279.7	-0.10%	-0.22%
SERVICES	662.6	661.9	-0.10%	-10.03%
INDUSTRY	2505.8	2503.5	-0.09%	-4.20%

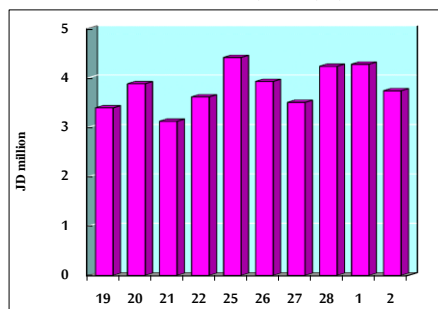
STOCK PRICE MARKET INDEX WEIGHTED BY FREE FLOAT MARKET CAP. (2012=1000)

	SUNDAY 01/11/2020	MONDAY 02/11/2020	% CHANGE	
			DAY BEFORE	YTD
FIRST MARKET	803.7	801.5	-0.27%	-16.15%
SECOND MARKET	813.3	814.5	0.15%	-2.58%

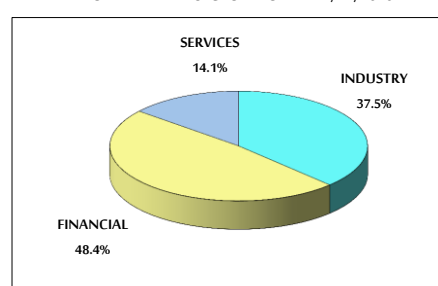
MARKET CAPITALIZATION (JD)

	12,176,159,385	12,178,521,642	0.02%	-18.35%
--	----------------	----------------	-------	---------

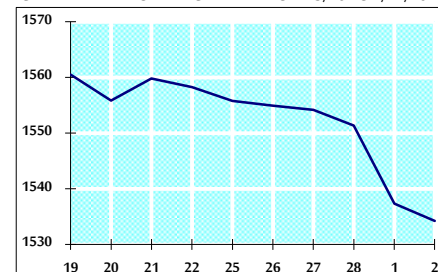
VALUE TRADED FROM 19/10 TO 2/11/2020



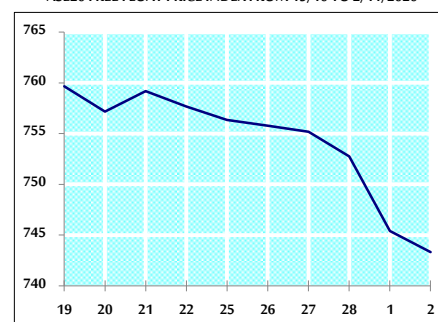
VALUE TRADED BY SECTOR MONDAY 2/11/2020



GENERAL FREE FLOAT PRICE INDEX FROM 19/10 TO 2/11/2020



ASE20 FREE FLOAT PRICE INDEX FROM 19/10 TO 2/11/2020



GENERAL PRICE INDEX FROM 19/10 TO 2/11/2020

