

## Daily Summary for Amman Stock Exchange

### VALUE TRADED (JD)

	2019	2020	NET CHANGE	CHANGE (%)
Daily	3,994,329	4,274,582	280,253	7.02%
Cumulative(1/11-1/11)	3,994,329	4,274,582	280,253	7.02%
Cumulative(2/1-1/11)	1,341,051,888	794,367,292	-546,684,596	-40.77%

### NO. OF SHARES TRADED

	2019	2020	NET CHANGE	CHANGE (%)
Daily	4,668,123	5,158,862	490,739	10.51%
Cumulative(1/11-1/11)	4,668,123	5,158,862	490,739	10.51%
Cumulative(2/1-1/11)	1,026,768,078	881,222,885	-145,545,193	-14.18%

### NO. OF TRANSACTIONS

	2019	2020	NET CHANGE	CHANGE (%)
Daily	1,569	1,698	129	8.22%
Cumulative(1/11-1/11)	1,569	1,698	129	8.22%
Cumulative(2/1-1/11)	432,417	336,451	-95,966	-22.19%

### SOME FINANCIAL RATIOS FOR THE ASE (1/11/2020)

SECTOR	P/E	P/BV	DIVIDEND YIELD (%)	TURNOVER (%)
FINANCIAL	8.773	0.711	0.177	0.047
SERVICES	11.164	0.970	5.480	0.093
INDUSTRY	15.245	1.140	4.196	0.240
OVERALL	9.339	0.795	1.945	0.081

### STOCK PRICE INDEX WEIGHTED BY FREE FLOAT MARKET CAPITALIZATION (1999=1000)

	WEDNESDAY 28/10/2020	SUNDAY 01/11/2020	% CHANGE	
			DAY BEFORE	YTD
GENERAL	1551.4	1537.3	-0.90%	-15.31%
FINANCIAL	2061.3	2039.8	-1.04%	-16.74%
SERVICES	1082.3	1075.3	-0.64%	-16.84%
INDUSTRY	1893.2	1891.3	-0.10%	1.85%

### STOCK PRICE INDEX WEIGHTED BY FREE FLOAT MARKET CAPITALIZATION ASE20 (2014=1000)

	752.8	745.4	-0.98%	-16.34%
--	-------	-------	--------	---------

### STOCK PRICE INDEX WEIGHTED BY MARKET CAPITALIZATION (1991=1000)

	WEDNESDAY 28/10/2020	SUNDAY 01/11/2020	% CHANGE	
			DAY BEFORE	YTD
GENERAL	2869.5	2851.8	-0.62%	-18.84%
BANKS	5218.9	5166.0	-1.01%	-27.19%
INSURANCE	1283.5	1280.9	-0.20%	-0.13%
SERVICES	664.9	662.6	-0.34%	-9.94%
INDUSTRY	2503.0	2505.8	0.11%	-4.11%

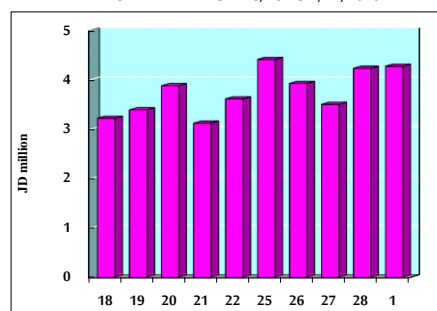
### STOCK PRICE MARKET INDEX WEIGHTED BY FREE FLOAT MARKET CAP. (2012=1000)

	WEDNESDAY 28/10/2020	SUNDAY 01/11/2020	% CHANGE	
			DAY BEFORE	YTD
FIRST MARKET	811.5	803.7	-0.97%	-15.92%
SECOND MARKET	819.3	813.3	-0.73%	-2.72%

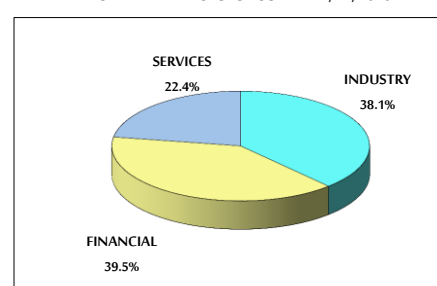
### MARKET CAPITALIZATION (JD)

	12,240,915,747	12,176,159,385	-0.53%	-18.36%
--	----------------	----------------	--------	---------

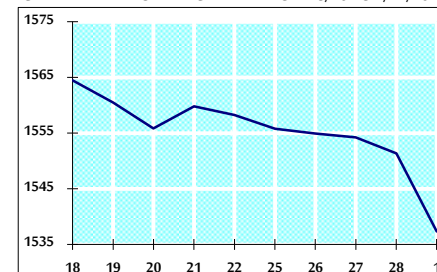
### VALUE TRADED FROM 18/10 TO 1/11/2020



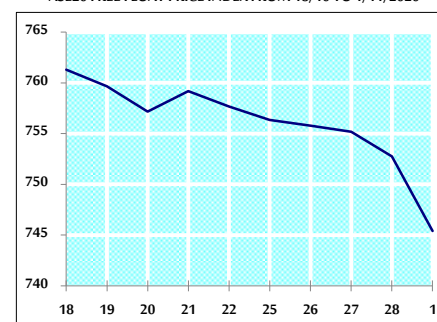
### VALUE TRADED BY SECTOR SUNDAY 1/11/2020



### GENERAL FREE FLOAT PRICE INDEX FROM 18/10 TO 1/11/2020



### ASE20 FREE FLOAT PRICE INDEX FROM 18/10 TO 1/11/2020



### GENERAL PRICE INDEX FROM 18/10 TO 1/11/2020

