

Daily Summary for Amman Stock Exchange

VALUE TRADED (JD)

	2019	2020	NET CHANGE	CHANGE (%)
Daily	4,020,990	3,084,721	-936,269	-23.28%
Cumulative(1/10-13/10)	47,792,571	36,435,596	-11,356,975	-23.76%
Cumulative(2/1-13/10)	1,125,583,788	747,496,504	-378,087,284	-33.59%

NO. OF SHARES TRADED

	2019	2020	NET CHANGE	CHANGE (%)
Daily	4,504,614	3,905,357	-599,257	-13.30%
Cumulative(1/10-13/10)	38,405,770	44,844,847	6,439,077	16.77%
Cumulative(2/1-13/10)	941,933,433	822,271,433	-119,662,000	-12.70%

NO. OF TRANSACTIONS

	2019	2020	NET CHANGE	CHANGE (%)
Daily	2,167	1,581	-586	-27.04%
Cumulative(1/10-13/10)	18,824	15,280	-3,544	-18.83%
Cumulative(2/1-13/10)	406,163	314,883	-91,280	-22.47%

SOME FINANCIAL RATIOS FOR THE ASE (13/10/2020)

SECTOR	P/E	P/BV	DIVIDEND YIELD (%)	TURNOVER (%)
FINANCIAL	8.969	0.727	0.173	0.041
SERVICES	11.272	0.980	5.427	0.041
INDUSTRY	15.023	1.123	4.258	0.202
OVERALL	9.468	0.806	1.919	0.061

STOCK PRICE INDEX WEIGHTED BY FREE FLOAT MARKET CAPITALIZATION (1999=1000)

	MONDAY 12/10/2020	TUESDAY 13/10/2020	% CHANGE	
			DAY BEFORE	YTD
GENERAL	1568.1	1565.2	-0.18%	-13.77%
FINANCIAL	2089.5	2085.4	-0.19%	-14.88%
SERVICES	1088.6	1085.0	-0.33%	-16.09%
INDUSTRY	1875.7	1886.1	0.55%	1.57%

STOCK PRICE INDEX WEIGHTED BY FREE FLOAT MARKET CAPITALIZATION ASE20 (2014=1000)

	762.4	761.1	-0.17%	-14.58%
--	-------	-------	--------	---------

STOCK PRICE INDEX WEIGHTED BY MARKET CAPITALIZATION (1991=1000)

	MONDAY 12/10/2020	TUESDAY 13/10/2020	% CHANGE	
			DAY BEFORE	YTD
GENERAL	2892.8	2891.0	-0.06%	-17.72%
BANKS	5326.9	5291.9	-0.66%	-25.42%
INSURANCE	1275.8	1282.6	0.54%	0.01%
SERVICES	671.9	672.5	0.08%	-8.60%
INDUSTRY	2445.1	2476.8	1.30%	-5.22%

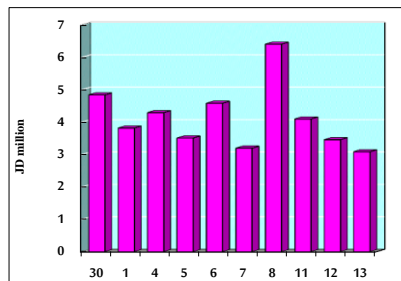
STOCK PRICE MARKET INDEX WEIGHTED BY FREE FLOAT MARKET CAP. (2012=1000)

	MONDAY 12/10/2020	TUESDAY 13/10/2020	% CHANGE	
			DAY BEFORE	YTD
FIRST MARKET	821.0	819.0	-0.24%	-14.31%
SECOND MARKET	826.9	829.4	0.30%	-0.79%

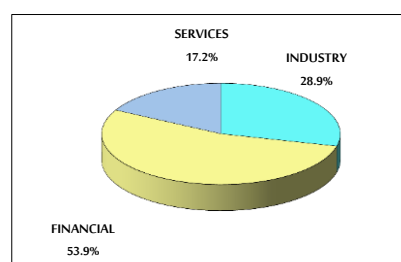
MARKET CAPITALIZATION (JD)

	12,315,632,355	12,310,524,097	-0.04%	-17.46%
--	----------------	----------------	--------	---------

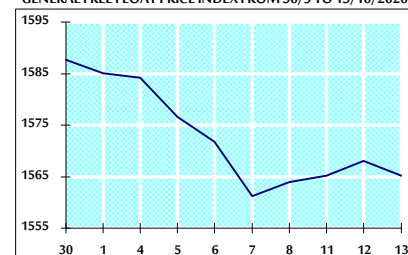
VALUE TRADED FROM 30/9 TO 13/10/2020



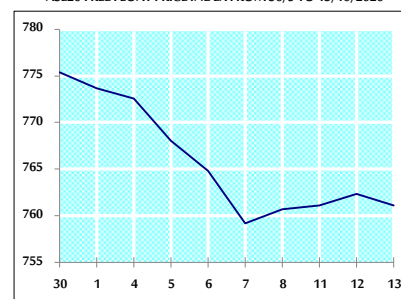
VALUE TRADED BY SECTOR TUESDAY 13/10/2020



GENERAL FREE FLOAT PRICE INDEX FROM 30/9 TO 13/10/2020



ASE20 FREE FLOAT PRICE INDEX FROM 30/9 TO 13/10/2020



GENERAL PRICE INDEX FROM 30/9 TO 13/10/2020

