

Daily Summary for Amman Stock Exchange

VALUE TRADED (JD)

	2019	2020	NET CHANGE	CHANGE (%)
Daily	2,748,366	4,232,262	1,483,896	53.99%
Cumulative(1/10-28/10)	259,266,342	79,031,802	-180,234,540	-69.52%
Cumulative(2/1-28/10)	1,337,057,559	790,092,710	-546,964,849	-40.91%

NO. OF SHARES TRADED

	2019	2020	NET CHANGE	CHANGE (%)
Daily	2,834,372	5,897,701	3,063,329	108.08%
Cumulative(1/10-28/10)	118,572,292	98,637,437	-19,934,855	-16.81%
Cumulative(2/1-28/10)	1,022,099,955	876,064,023	-146,035,932	-14.29%

NO. OF TRANSACTIONS

	2019	2020	NET CHANGE	CHANGE (%)
Daily	1,509	2,281	772	51.16%
Cumulative(1/10-28/10)	43,509	35,150	-8,359	-19.21%
Cumulative(2/1-28/10)	430,848	334,753	-96,095	-22.30%

SOME FINANCIAL RATIOS FOR THE ASE (28/10/2020)

SECTOR	P/E	P/BV	DIVIDEND YIELD (%)	TURNOVER (%)
FINANCIAL	8.857	0.718	0.175	0.072
SERVICES	11.190	0.972	5.467	0.085
INDUSTRY	15.211	1.138	4.205	0.212
OVERALL	9.397	0.800	1.933	0.092

STOCK PRICE INDEX WEIGHTED BY FREE FLOAT MARKET CAPITALIZATION (1999=1000)

	TUESDAY 27/10/2020	WEDNESDAY 28/10/2020	% CHANGE	
			DAY BEFORE	YTD
GENERAL	1554.2	1551.4	-0.18%	-14.53%
FINANCIAL	2066.5	2061.3	-0.25%	-15.86%
SERVICES	1085.7	1082.3	-0.31%	-16.30%
INDUSTRY	1880.1	1893.2	0.70%	1.95%

STOCK PRICE INDEX WEIGHTED BY FREE FLOAT MARKET CAPITALIZATION ASE20 (2014=1000)

	755.2	752.8	-0.32%	-15.51%
--	-------	-------	--------	---------

STOCK PRICE INDEX WEIGHTED BY MARKET CAPITALIZATION (1991=1000)

	TUESDAY 27/10/2020	WEDNESDAY 28/10/2020	% CHANGE	
			DAY BEFORE	YTD
GENERAL	2872.7	2869.5	-0.11%	-18.33%
BANKS	5235.2	5218.9	-0.31%	-26.45%
INSURANCE	1285.7	1283.5	-0.17%	0.08%
SERVICES	668.6	664.9	-0.56%	-9.63%
INDUSTRY	2485.5	2503.0	0.71%	-4.21%

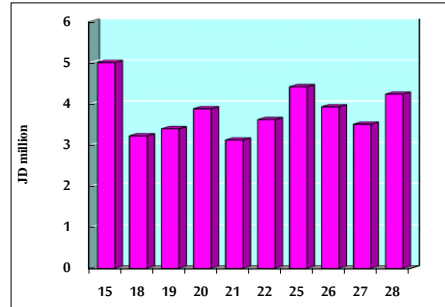
STOCK PRICE MARKET INDEX WEIGHTED BY FREE FLOAT MARKET CAP. (2012=1000)

	TUESDAY 27/10/2020	WEDNESDAY 28/10/2020	% CHANGE	
			DAY BEFORE	YTD
FIRST MARKET	814.1	811.5	-0.31%	-15.10%
SECOND MARKET	815.9	819.3	0.42%	-2.00%

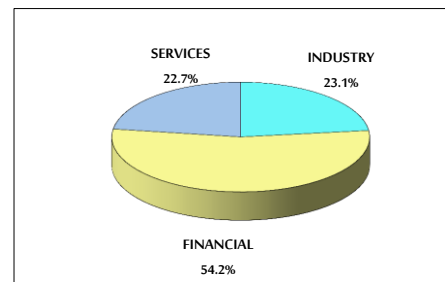
MARKET CAPITALIZATION (JD)

	12,251,241,395	12,240,915,747	-0.08%	-17.93%
--	----------------	----------------	--------	---------

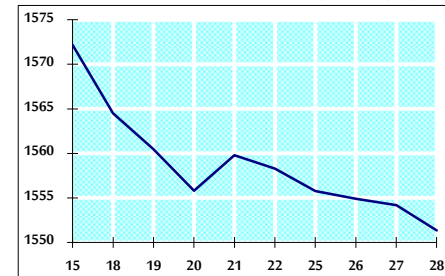
VALUE TRADED FROM 15/10 TO 28/10/2020



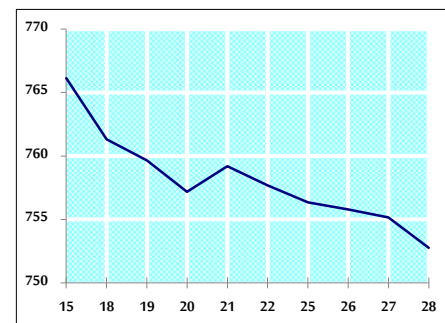
VALUE TRADED BY SECTOR WEDNESDAY 28/10/2020



GENERAL FREE FLOAT PRICE INDEX FROM 15/10 TO 28/10/2020



ASE20 FREE FLOAT PRICE INDEX FROM 15/10 TO 28/10/2020



GENERAL PRICE INDEX FROM 15/10 TO 28/10/2020

