

## Daily Summary for Amman Stock Exchange

### VALUE TRADED (JD)

	2019	2020	NET CHANGE	CHANGE (%)
Daily	2,207,753	3,503,886	1,296,133	58.71%
Cumulative(1/10-27/10)	244,833,058	74,799,540	-170,033,518	-69.45%
Cumulative(2/1-27/10)	1,322,624,275	785,860,448	-536,763,827	-40.58%

### NO. OF SHARES TRADED

	2019	2020	NET CHANGE	CHANGE (%)
Daily	2,367,371	4,416,787	2,049,416	86.57%
Cumulative(1/10-27/10)	102,426,491	92,739,736	-9,686,755	-9.46%
Cumulative(2/1-27/10)	1,005,954,154	870,166,322	-135,787,832	-13.50%

### NO. OF TRANSACTIONS

	2019	2020	NET CHANGE	CHANGE (%)
Daily	1,384	1,626	242	17.49%
Cumulative(1/10-27/10)	36,861	32,869	-3,992	-10.83%
Cumulative(2/1-27/10)	424,200	332,472	-91,728	-21.62%

### SOME FINANCIAL RATIOS FOR THE ASE (27/10/2020)

SECTOR	P/E	P/BV	DIVIDEND YIELD (%)	TURNOVER (%)
FINANCIAL	8.878	0.720	0.175	0.048
SERVICES	11.267	0.979	5.430	0.054
INDUSTRY	15.100	1.129	4.236	0.205
OVERALL	9.408	0.801	1.931	0.069

### STOCK PRICE INDEX WEIGHTED BY FREE FLOAT MARKET CAPITALIZATION (1999=1000)

	MONDAY 26/10/2020	TUESDAY 27/10/2020	% CHANGE	
			DAY BEFORE	YTD
GENERAL	1554.9	1554.2	-0.05%	-14.38%
FINANCIAL	2068.6	2066.5	-0.10%	-15.65%
SERVICES	1086.2	1085.7	-0.05%	-16.04%
INDUSTRY	1878.1	1880.1	0.11%	1.25%

### STOCK PRICE INDEX WEIGHTED BY FREE FLOAT MARKET CAPITALIZATION ASE20 (2014=1000)

	755.8	755.2	-0.08%	-15.24%
--	-------	-------	--------	---------

### STOCK PRICE INDEX WEIGHTED BY MARKET CAPITALIZATION (1991=1000)

	MONDAY 26/10/2020	TUESDAY 27/10/2020	% CHANGE	
			DAY BEFORE	YTD
GENERAL	2872.3	2872.7	0.01%	-18.24%
BANKS	5236.3	5235.2	-0.02%	-26.22%
INSURANCE	1290.4	1285.7	-0.37%	0.25%
SERVICES	666.9	668.6	0.25%	-9.13%
INDUSTRY	2487.5	2485.5	-0.08%	-4.89%

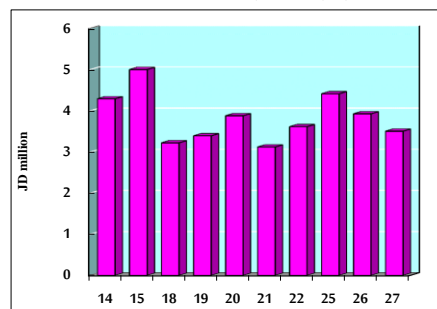
### STOCK PRICE MARKET INDEX WEIGHTED BY FREE FLOAT MARKET CAP. (2012=1000)

	MONDAY 26/10/2020	TUESDAY 27/10/2020	% CHANGE	
			DAY BEFORE	YTD
FIRST MARKET	814.6	814.1	-0.06%	-14.83%
SECOND MARKET	816.5	815.9	-0.08%	-2.41%

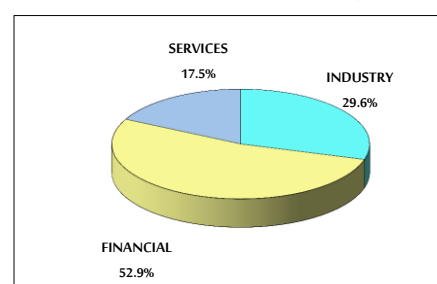
### MARKET CAPITALIZATION (JD)

	12,250,769,394	12,251,241,395	0.00%	-17.86%
--	----------------	----------------	-------	---------

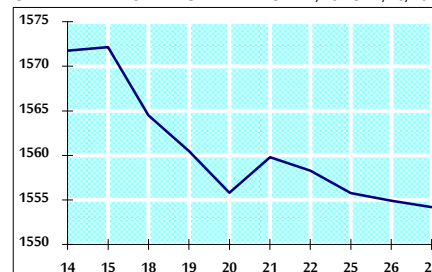
### VALUE TRADED FROM 14/10 TO 27/10/2020



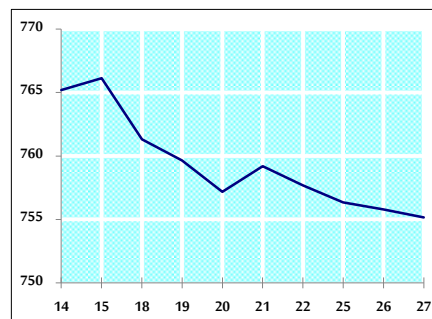
### VALUE TRADED BY SECTOR TUESDAY 27/10/2020



### GENERAL FREE FLOAT PRICE INDEX FROM 14/10 TO 27/10/2020



### ASE20 FREE FLOAT PRICE INDEX FROM 14/10 TO 27/10/2020



### GENERAL PRICE INDEX FROM 14/10 TO 27/10/2020

