

Daily Summary for Amman Stock Exchange

VALUE TRADED (JD)

	2019	2020	NET CHANGE	CHANGE (%)
Daily	3,926,523	4,412,091	485,568	12.37%
Cumulative(1/10-25/10)	237,922,195	67,369,001	-170,553,194	-71.68%
Cumulative(2/1-25/10)	1,315,713,412	778,429,909	-537,283,503	-40.84%

NO. OF SHARES TRADED

	2019	2020	NET CHANGE	CHANGE (%)
Daily	3,849,088	6,124,727	2,275,639	59.12%
Cumulative(1/10-25/10)	96,271,653	83,355,296	-12,916,357	-13.42%
Cumulative(2/1-25/10)	999,799,316	860,781,882	-139,017,434	-13.90%

NO. OF TRANSACTIONS

	2019	2020	NET CHANGE	CHANGE (%)
Daily	1,891	1,446	-445	-23.53%
Cumulative(1/10-25/10)	33,349	29,306	-4,043	-12.12%
Cumulative(2/1-25/10)	420,688	328,909	-91,779	-21.82%

SOME FINANCIAL RATIOS FOR THE ASE (25/10/2020)

SECTOR	P/E	P/BV	DIVIDEND YIELD (%)	TURNOVER (%)
FINANCIAL	8.888	0.720	0.175	0.037
SERVICES	11.218	0.975	5.453	0.278
INDUSTRY	15.086	1.128	4.240	0.119
OVERALL	9.404	0.801	1.932	0.096

STOCK PRICE INDEX WEIGHTED BY FREE FLOAT MARKET CAPITALIZATION (1999=1000)

	THURSDAY 22/10/2020	SUNDAY 25/10/2020	% CHANGE	
			DAY BEFORE	YTD
GENERAL	1558.3	1555.8	-0.16%	-14.29%
FINANCIAL	2075.4	2070.9	-0.22%	-15.47%
SERVICES	1085.8	1085.5	-0.03%	-16.05%
INDUSTRY	1878.2	1879.4	0.06%	1.21%

STOCK PRICE INDEX WEIGHTED BY FREE FLOAT MARKET CAPITALIZATION ASE20 (2014=1000)

	757.7	756.4	-0.17%	-15.11%
--	-------	-------	--------	---------

STOCK PRICE INDEX WEIGHTED BY MARKET CAPITALIZATION (1991=1000)

	THURSDAY 22/10/2020	SUNDAY 25/10/2020	% CHANGE	
			DAY BEFORE	YTD
GENERAL	2875.8	2871.6	-0.15%	-18.28%
BANKS	5244.6	5239.2	-0.10%	-26.16%
INSURANCE	1297.1	1289.8	-0.56%	0.57%
SERVICES	666.1	665.6	-0.07%	-9.53%
INDUSTRY	2492.6	2485.1	-0.30%	-4.90%

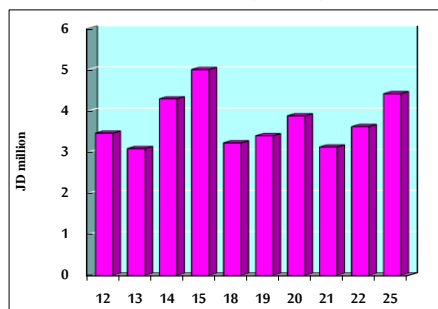
STOCK PRICE MARKET INDEX WEIGHTED BY FREE FLOAT MARKET CAP. (2012=1000)

	THURSDAY 22/10/2020	SUNDAY 25/10/2020	% CHANGE	
			DAY BEFORE	YTD
FIRST MARKET	816.0	814.7	-0.16%	-14.77%
SECOND MARKET	821.1	819.0	-0.26%	-2.04%

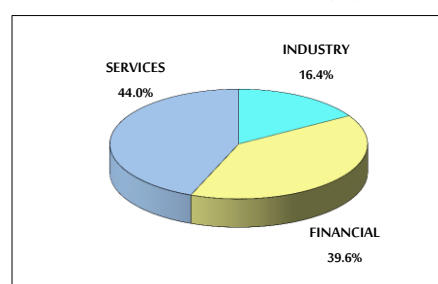
MARKET CAPITALIZATION (JD)

	12,258,842,185	12,248,312,764	-0.09%	-17.88%
--	----------------	----------------	--------	---------

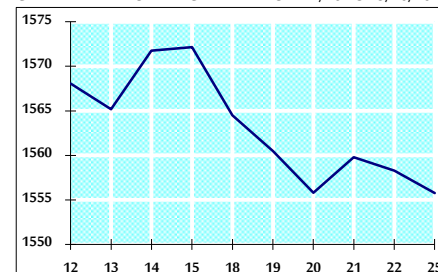
VALUE TRADED FROM 12/10 TO 25/10/2020



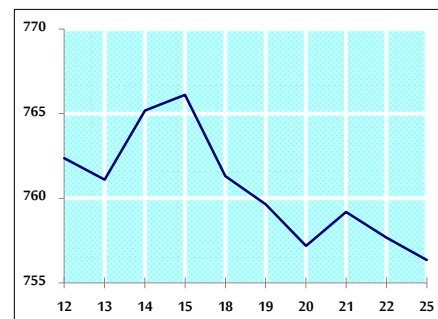
VALUE TRADED BY SECTOR SUNDAY 25/10/2020



GENERAL FREE FLOAT PRICE INDEX FROM 12/10 TO 25/10/2020



ASE20 FREE FLOAT PRICE INDEX FROM 12/10 TO 25/10/2020



GENERAL PRICE INDEX FROM 12/10 TO 25/10/2020

