

Daily Summary for Amman Stock Exchange

VALUE TRADED (JD)

	2019	2020	NET CHANGE	CHANGE (%)
Daily	4,903,143	1,546,180	-3,356,963	-68.47%
Cumulative(1/7-13/7)	45,317,408	41,656,225	-3,661,183	-8.08%
Cumulative(2/1-13/7)	713,383,117	457,265,537	-256,117,580	-35.90%

NO. OF SHARES TRADED

	2019	2020	NET CHANGE	CHANGE (%)
Daily	5,253,582	2,472,622	-2,780,960	-52.93%
Cumulative(1/7-13/7)	47,800,876	50,751,625	2,950,749	6.17%
Cumulative(2/1-13/7)	582,055,552	454,078,716	-127,976,836	-21.99%

NO. OF TRANSACTIONS

	2019	2020	NET CHANGE	CHANGE (%)
Daily	2,604	1,478	-1,126	-43.24%
Cumulative(1/7-13/7)	26,363	15,510	-10,853	-41.17%
Cumulative(2/1-13/7)	269,798	178,148	-91,650	-33.97%

SOME FINANCIAL RATIOS FOR THE ASE (13/7/2020)

SECTOR	P/E	P/BV	DIVIDEND YIELD (%)	TURNOVER (%)
FINANCIAL	9.286	0.753	0.167	0.039
SERVICES	12.504	0.970	4.847	0.019
INDUSTRY	14.962	1.221	3.487	0.064
OVERALL	9.844	0.861	1.757	0.037

STOCK PRICE INDEX WEIGHTED BY FREE FLOAT MARKET CAPITALIZATION (1999=1000)

	SUNDAY 12/07/2020	MONDAY 13/07/2020	% CHANGE	
			DAY BEFORE	YTD
GENERAL	1587.6	1588.0	0.03%	-12.52%
FINANCIAL	2101.6	2101.0	-0.03%	-14.24%
SERVICES	1138.6	1141.9	0.29%	-11.69%
INDUSTRY	1798.9	1795.6	-0.18%	-3.30%

STOCK PRICE INDEX WEIGHTED BY FREE FLOAT MARKET CAPITALIZATION ASE20 (2014=1000)

	779.8	780.1	0.04%	-12.44%
--	-------	-------	-------	---------

STOCK PRICE INDEX WEIGHTED BY MARKET CAPITALIZATION (1991=1000)

	SUNDAY 12/07/2020	MONDAY 13/07/2020	% CHANGE	
			DAY BEFORE	YTD
GENERAL	2914.2	2912.0	-0.08%	-17.12%
BANKS	5545.9	5545.9	0.00%	-21.84%
INSURANCE	1312.8	1311.5	-0.10%	2.26%
SERVICES	663.0	664.8	0.27%	-9.65%
INDUSTRY	2322.7	2312.9	-0.42%	-11.49%

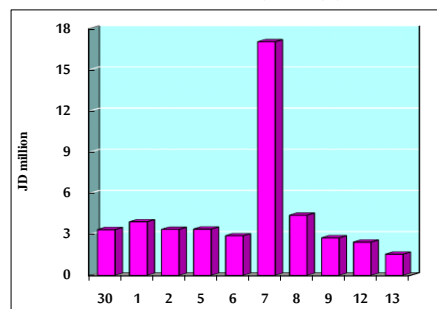
STOCK PRICE MARKET INDEX WEIGHTED BY FREE FLOAT MARKET CAP. (2012=1000)

	SUNDAY 12/07/2020	MONDAY 13/07/2020	% CHANGE	
			DAY BEFORE	YTD
FIRST MARKET	839.0	839.2	0.02%	-12.20%
SECOND MARKET	756.6	756.6	0.00%	-9.50%

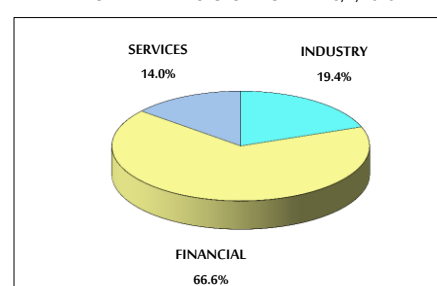
MARKET CAPITALIZATION (JD)

	12,410,251,562	12,401,339,790	-0.07%	-16.85%
--	----------------	----------------	--------	---------

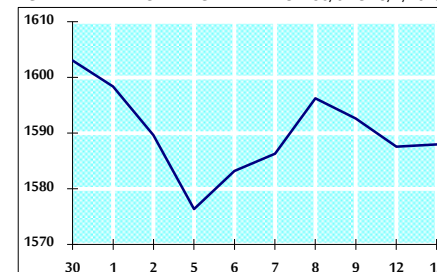
VALUE TRADED FROM 30/6 TO 13/7/2020



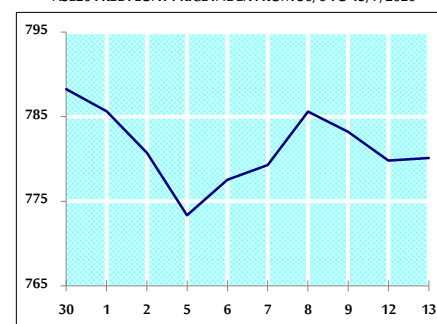
VALUE TRADED BY SECTOR MONDAY 13/7/2020



GENERAL FREE FLOAT PRICE INDEX FROM 30/6 TO 13/7/2020



ASE20 FREE FLOAT PRICE INDEX FROM 30/6 TO 13/7/2020



GENERAL PRICE INDEX FROM 30/6 TO 13/7/2020

