

Daily Summary for Amman Stock Exchange

VALUE TRADED (JD)

	2019	2020	NET CHANGE	CHANGE (%)
Daily	4,249,942	2,426,869	-1,823,073	-42.90%
Cumulative(1/7-12/7)	40,414,265	40,110,045	-304,220	-0.75%
Cumulative(2/1-12/7)	708,479,974	455,719,357	-252,760,617	-35.68%

NO. OF SHARES TRADED

	2019	2020	NET CHANGE	CHANGE (%)
Daily	4,638,404	2,589,913	-2,048,491	-44.16%
Cumulative(1/7-12/7)	42,547,294	48,279,003	5,731,709	13.47%
Cumulative(2/1-12/7)	576,801,970	451,606,094	-125,195,876	-21.71%

NO. OF TRANSACTIONS

	2019	2020	NET CHANGE	CHANGE (%)
Daily	2,561	1,388	-1,173	-45.80%
Cumulative(1/7-12/7)	23,759	14,032	-9,727	-40.94%
Cumulative(2/1-12/7)	267,194	176,670	-90,524	-33.88%

SOME FINANCIAL RATIOS FOR THE ASE (12/7/2020)

SECTOR	P/E	P/BV	DIVIDEND YIELD (%)	TURNOVER (%)
FINANCIAL	9.285	0.753	0.167	0.039
SERVICES	12.466	0.968	4.862	0.033
INDUSTRY	15.038	1.228	3.470	0.051
OVERALL	9.851	0.861	1.756	0.039

STOCK PRICE INDEX WEIGHTED BY FREE FLOAT MARKET CAPITALIZATION (1999=1000)

	THURSDAY 09/07/2020	SUNDAY 12/07/2020	% CHANGE	
			DAY BEFORE	YTD
GENERAL	1592.6	1587.6	-0.32%	-12.54%
FINANCIAL	2110.8	2101.6	-0.43%	-14.22%
SERVICES	1140.8	1138.6	-0.19%	-11.95%
INDUSTRY	1798.7	1798.9	0.01%	-3.12%

STOCK PRICE INDEX WEIGHTED BY FREE FLOAT MARKET CAPITALIZATION ASE20 (2014=1000)

	783.2	779.8	-0.43%	-12.47%
--	-------	-------	--------	---------

STOCK PRICE INDEX WEIGHTED BY MARKET CAPITALIZATION (1991=1000)

	THURSDAY 09/07/2020	SUNDAY 12/07/2020	% CHANGE	
			DAY BEFORE	YTD
GENERAL	2923.8	2914.2	-0.33%	-17.06%
BANKS	5580.7	5545.9	-0.63%	-21.84%
INSURANCE	1312.9	1312.8	-0.01%	2.36%
SERVICES	662.3	663.0	0.10%	-9.89%
INDUSTRY	2322.0	2322.7	0.03%	-11.11%

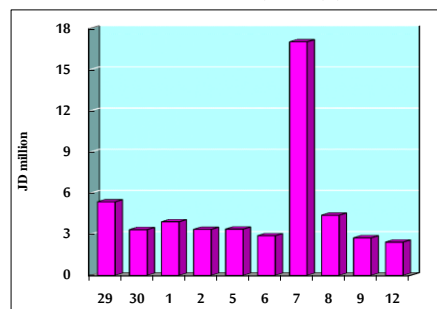
STOCK PRICE MARKET INDEX WEIGHTED BY FREE FLOAT MARKET CAP. (2012=1000)

	THURSDAY 09/07/2020	SUNDAY 12/07/2020	% CHANGE	
			DAY BEFORE	YTD
FIRST MARKET	842.2	839.0	-0.38%	-12.22%
SECOND MARKET	756.4	756.6	0.02%	-9.51%

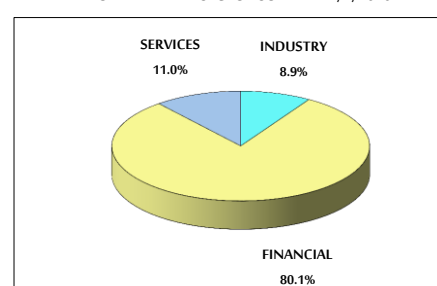
MARKET CAPITALIZATION (JD)

	12,447,819,463	12,410,251,562	-0.30%	-16.79%
--	----------------	----------------	--------	---------

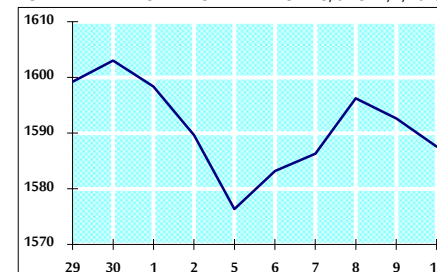
VALUE TRADED FROM 29/6 TO 12/7/2020



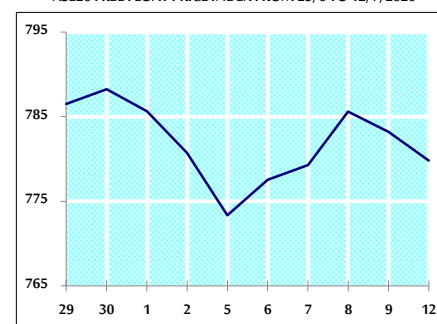
VALUE TRADED BY SECTOR SUNDAY 12/7/2020



GENERAL FREE FLOAT PRICE INDEX FROM 29/6 TO 12/7/2020



ASE20 FREE FLOAT PRICE INDEX FROM 29/6 TO 12/7/2020



GENERAL PRICE INDEX FROM 29/6 TO 12/7/2020

