

Daily Summary for Amman Stock Exchange

VALUE TRADED (JD)

	2019	2020	NET CHANGE	CHANGE (%)
Daily	4,071,582	4,389,935	318,353	7.82%
Cumulative(1/7-8/7)	30,835,823	34,945,022	4,109,199	13.33%
Cumulative(2/1-8/7)	698,901,532	450,554,334	-248,347,198	-35.53%

NO. OF SHARES TRADED

	2019	2020	NET CHANGE	CHANGE (%)
Daily	4,579,482	3,858,729	-720,753	-15.74%
Cumulative(1/7-8/7)	32,393,315	42,692,204	10,298,889	31.79%
Cumulative(2/1-8/7)	566,647,991	446,019,295	-120,628,696	-21.29%

NO. OF TRANSACTIONS

	2019	2020	NET CHANGE	CHANGE (%)
Daily	2,534	2,096	-438	-17.28%
Cumulative(1/7-8/7)	18,401	10,897	-7,504	-40.78%
Cumulative(2/1-8/7)	261,836	173,535	-88,301	-33.72%

SOME FINANCIAL RATIOS FOR THE ASE (8/7/2020)

SECTOR	P/E	P/BV	DIVIDEND YIELD (%)	TURNOVER (%)
FINANCIAL	9.346	0.758	0.166	0.061
SERVICES	12.498	0.970	4.850	0.041
INDUSTRY	15.020	1.226	3.474	0.075
OVERALL	9.891	0.865	1.749	0.058

STOCK PRICE INDEX WEIGHTED BY FREE FLOAT MARKET CAPITALIZATION (1999=1000)

	TUESDAY 07/07/2020	WEDNESDAY 08/07/2020	% CHANGE	
			DAY BEFORE	YTD
GENERAL	1586.3	1596.3	0.63%	-12.06%
FINANCIAL	2094.7	2114.7	0.96%	-13.68%
SERVICES	1149.3	1148.0	-0.11%	-11.22%
INDUSTRY	1790.9	1795.1	0.23%	-3.33%

STOCK PRICE INDEX WEIGHTED BY FREE FLOAT MARKET CAPITALIZATION ASE20 (2014=1000)

	779.3	785.6	0.81%	-11.83%
--	-------	-------	-------	---------

STOCK PRICE INDEX WEIGHTED BY MARKET CAPITALIZATION (1991=1000)

	TUESDAY 07/07/2020	WEDNESDAY 08/07/2020	% CHANGE	
			DAY BEFORE	YTD
GENERAL	2901.4	2926.0	0.85%	-16.73%
BANKS	5515.5	5587.5	1.30%	-21.25%
INSURANCE	1315.9	1313.6	-0.17%	2.43%
SERVICES	664.2	662.5	-0.26%	-9.95%
INDUSTRY	2309.0	2322.2	0.57%	-11.13%

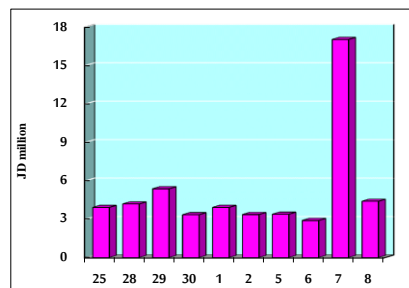
STOCK PRICE MARKET INDEX WEIGHTED BY FREE FLOAT MARKET CAP. (2012=1000)

	TUESDAY 07/07/2020	WEDNESDAY 08/07/2020	% CHANGE	
			DAY BEFORE	YTD
FIRST MARKET	838.4	844.7	0.75%	-11.63%
SECOND MARKET	755.0	754.3	-0.08%	-9.77%

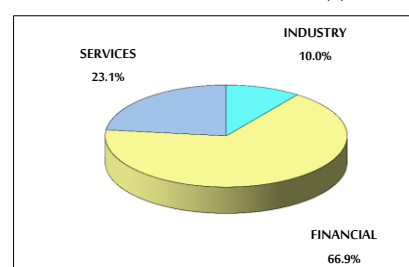
MARKET CAPITALIZATION (JD)

	12,364,259,794	12,459,335,062	0.77%	-16.46%
--	----------------	----------------	-------	---------

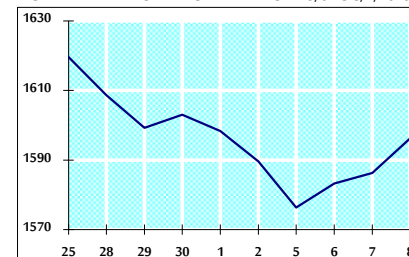
VALUE TRADED FROM 25/6 TO 8/7/2020



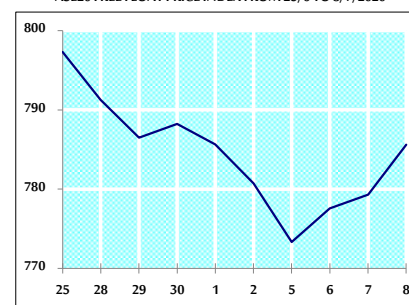
VALUE TRADED BY SECTOR WEDNESDAY 8/7/2020



GENERAL FREE FLOAT PRICE INDEX FROM 25/6 TO 8/7/2020



ASE20 FREE FLOAT PRICE INDEX FROM 25/6 TO 8/7/2020



GENERAL PRICE INDEX FROM 25/6 TO 8/7/2020

