

### Daily Summary for Amman Stock Exchange

VALUE TRADED (JD)

	2019	2020	NET CHANGE	CHANGE (%)
Daily	4,758,458	4,300,740	-457,718	-9.62%
Cumulative(1/6-15/6)	50,591,398	54,310,929	3,719,531	7.35%
Cumulative(2/1-15/6)	621,476,232	369,943,398	-251,532,834	-40.47%

NO. OF SHARES TRADED

	2019	2020	NET CHANGE	CHANGE (%)
Daily	4,582,324	3,721,996	-860,328	-18.77%
Cumulative(1/6-15/6)	52,823,364	63,177,169	10,353,805	19.60%
Cumulative(2/1-15/6)	494,253,836	352,239,383	-142,014,453	-28.73%

NO. OF TRANSACTIONS

	2019	2020	NET CHANGE	CHANGE (%)
Daily	2,832	1,207	-1,625	-57.38%
Cumulative(1/6-15/6)	26,030	19,705	-6,325	-24.30%
Cumulative(2/1-15/6)	225,573	144,129	-81,444	-36.11%

SOME FINANCIAL RATIOS FOR THE ASE (15/6/2020)

SECTOR	P/E	P/BV	DIVIDEND YIELD (%)	TURNOVER (%)
FINANCIAL	9.584	0.785	0.171	0.055
SERVICES	12.859	1.000	4.686	0.038
INDUSTRY	15.549	1.280	0.623	0.092
OVERALL	10.131	0.900	0.971	0.056

STOCK PRICE INDEX WEIGHTED BY FREE FLOAT MARKET CAPITALIZATION (1999=1000)

	SUNDAY 14/06/2020	MONDAY 15/06/2020	% CHANGE	
			DAY BEFORE	YTD
GENERAL	1644.2	1649.6	0.33%	-9.12%
FINANCIAL	2154.7	2165.8	0.51%	-11.60%
SERVICES	1212.2	1212.2	0.00%	-6.25%
INDUSTRY	1822.9	1824.2	0.07%	-1.76%

STOCK PRICE INDEX WEIGHTED BY FREE FLOAT MARKET CAPITALIZATION ASE20 (2014=1000)

	808.7	812.1	0.42%	-8.86%
--	-------	-------	-------	--------

STOCK PRICE INDEX WEIGHTED BY MARKET CAPITALIZATION (1991=1000)

	SUNDAY 14/06/2020	MONDAY 15/06/2020	% CHANGE	
			DAY BEFORE	YTD
GENERAL	3026.0	3036.9	0.36%	-13.57%
BANKS	5782.6	5824.6	0.73%	-17.91%
INSURANCE	1336.7	1333.7	-0.22%	3.99%
SERVICES	679.8	677.9	-0.28%	-7.85%
INDUSTRY	2411.4	2411.8	0.02%	-7.70%

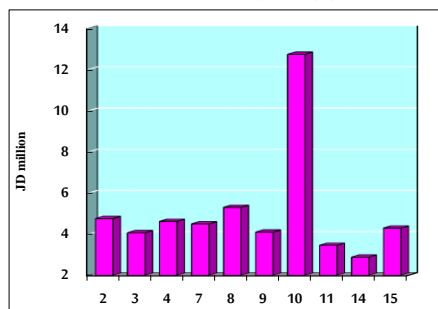
STOCK PRICE MARKET INDEX WEIGHTED BY FREE FLOAT MARKET CAP. (2012=1000)

	SUNDAY 14/06/2020	MONDAY 15/06/2020	% CHANGE	
			DAY BEFORE	YTD
FIRST MARKET	871.5	874.8	0.38%	-8.47%
SECOND MARKET	761.9	762.5	0.07%	-8.80%

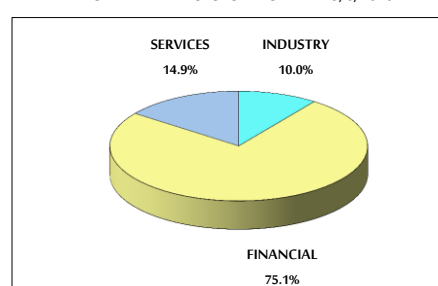
MARKET CAPITALIZATION (JD)

	12,894,359,389	12,937,331,151	0.33%	-13.26%
--	----------------	----------------	-------	---------

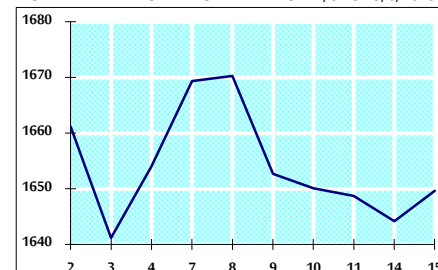
VALUE TRADED FROM 2/6 TO 15/6/2020



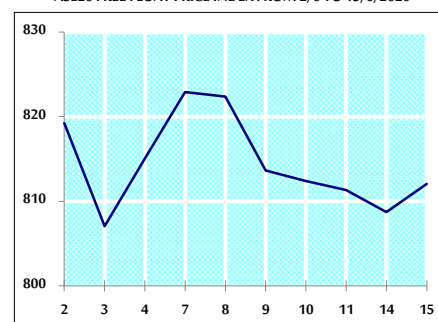
VALUE TRADED BY SECTOR MONDAY 15/6/2020



GENERAL FREE FLOAT PRICE INDEX FROM 2/6 TO 15/6/2020



ASE20 FREE FLOAT PRICE INDEX FROM 2/6 TO 15/6/2020



GENERAL PRICE INDEX FROM 2/6 TO 15/6/2020

