

Daily Summary for Amman Stock Exchange

VALUE TRADED (JD)

	2019	2020	NET CHANGE	CHANGE (%)
Daily	6,295,399	2,886,479	-3,408,920	-54.15%
Cumulative(1/6-14/6)	45,832,940	50,010,189	4,177,249	9.11%
Cumulative(2/1-14/6)	616,717,774	365,642,658	-251,075,116	-40.71%

NO. OF SHARES TRADED

	2019	2020	NET CHANGE	CHANGE (%)
Daily	7,302,734	3,705,091	-3,597,643	-49.26%
Cumulative(1/6-14/6)	48,241,040	59,455,173	11,214,133	23.25%
Cumulative(2/1-14/6)	489,671,512	348,517,387	-141,154,125	-28.83%

NO. OF TRANSACTIONS

	2019	2020	NET CHANGE	CHANGE (%)
Daily	3,232	1,108	-2,124	-65.72%
Cumulative(1/6-14/6)	23,198	18,498	-4,700	-20.26%
Cumulative(2/1-14/6)	222,741	142,922	-79,819	-35.83%

SOME FINANCIAL RATIOS FOR THE ASE (14/6/2020)

SECTOR	P/E	P/BV	DIVIDEND YIELD (%)	TURNOVER (%)
FINANCIAL	9.425	0.779	0.178	0.019
SERVICES	12.891	1.000	4.729	0.052
INDUSTRY	15.496	1.279	0.623	0.246
OVERALL	10.026	0.896	0.987	0.055

STOCK PRICE INDEX WEIGHTED BY FREE FLOAT MARKET CAPITALIZATION (1999=1000)

	THURSDAY 11/06/2020	SUNDAY 14/06/2020	% CHANGE	
			DAY BEFORE	YTD
GENERAL	1648.7	1644.2	-0.27%	-9.42%
FINANCIAL	2160.1	2154.7	-0.25%	-12.05%
SERVICES	1216.6	1212.2	-0.36%	-6.25%
INDUSTRY	1826.1	1822.9	-0.18%	-1.83%

STOCK PRICE INDEX WEIGHTED BY FREE FLOAT MARKET CAPITALIZATION ASE20 (2014=1000)

	811.3	808.7	-0.32%	-9.23%
--	-------	-------	--------	--------

STOCK PRICE INDEX WEIGHTED BY MARKET CAPITALIZATION (1991=1000)

	THURSDAY 11/06/2020	SUNDAY 14/06/2020	% CHANGE	
			DAY BEFORE	YTD
GENERAL	3033.8	3026.0	-0.26%	-13.88%
BANKS	5799.2	5782.6	-0.29%	-18.51%
INSURANCE	1339.1	1336.7	-0.18%	4.22%
SERVICES	680.5	679.8	-0.09%	-7.60%
INDUSTRY	2418.3	2411.4	-0.28%	-7.72%

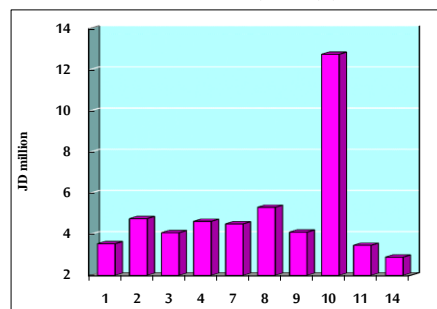
STOCK PRICE MARKET INDEX WEIGHTED BY FREE FLOAT MARKET CAP. (2012=1000)

	THURSDAY 11/06/2020	SUNDAY 14/06/2020	% CHANGE	
			DAY BEFORE	YTD
FIRST MARKET	874.0	871.5	-0.28%	-8.82%
SECOND MARKET	764.1	761.9	-0.28%	-8.86%

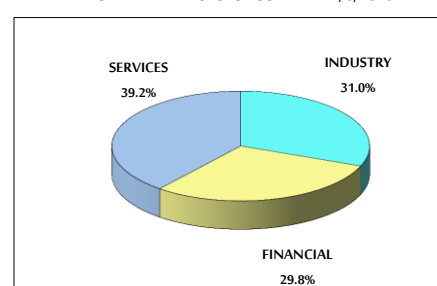
MARKET CAPITALIZATION (JD)

	12,934,277,659	12,894,359,389	-0.31%	-13.55%
--	----------------	----------------	--------	---------

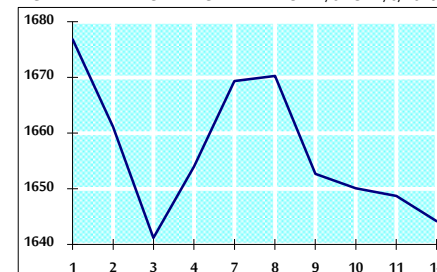
VALUE TRADED FROM 1/6 TO 14/6/2020



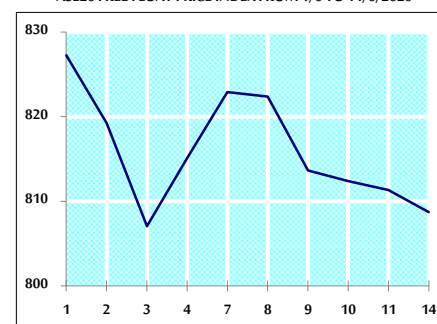
VALUE TRADED BY SECTOR SUNDAY 14/6/2020



GENERAL FREE FLOAT PRICE INDEX FROM 1/6 TO 14/6/2020



ASE20 FREE FLOAT PRICE INDEX FROM 1/6 TO 14/6/2020



GENERAL PRICE INDEX FROM 1/6 TO 14/6/2020

