

Daily Summary for Amman Stock Exchange

VALUE TRADED (JD)

	2019	2020	NET CHANGE	CHANGE (%)
Daily	5,144,727	3,462,679	-1,682,048	-32.69%
Cumulative(1/6-11/6)	39,537,541	47,123,710	7,586,169	19.19%
Cumulative(2/1-11/6)	610,422,375	362,756,179	-247,666,196	-40.57%

NO. OF SHARES TRADED

	2019	2020	NET CHANGE	CHANGE (%)
Daily	4,784,186	2,887,929	-1,896,257	-39.64%
Cumulative(1/6-11/6)	40,938,306	55,750,082	14,811,776	36.18%
Cumulative(2/1-11/6)	482,368,778	344,812,296	-137,556,482	-28.52%

NO. OF TRANSACTIONS

	2019	2020	NET CHANGE	CHANGE (%)
Daily	2,418	1,442	-976	-40.36%
Cumulative(1/6-11/6)	19,966	17,390	-2,576	-12.90%
Cumulative(2/1-11/6)	219,509	141,814	-77,695	-35.39%

SOME FINANCIAL RATIOS FOR THE ASE (11/6/2020)

SECTOR	P/E	P/BV	DIVIDEND YIELD (%)	TURNOVER (%)
FINANCIAL	9.483	0.782	0.243	0.038
SERVICES	12.806	1.004	4.714	0.044
INDUSTRY	15.525	1.282	0.622	0.068
OVERALL	10.039	0.898	0.984	0.043

STOCK PRICE INDEX WEIGHTED BY FREE FLOAT MARKET CAPITALIZATION (1999=1000)

	WEDNESDAY 10/06/2020	THURSDAY 11/06/2020	% CHANGE	
			DAY BEFORE	YTD
GENERAL	1650.1	1648.7	-0.08%	-9.17%
FINANCIAL	2167.7	2160.1	-0.35%	-11.83%
SERVICES	1208.6	1216.6	0.66%	-5.92%
INDUSTRY	1829.5	1826.1	-0.18%	-1.66%

STOCK PRICE INDEX WEIGHTED BY FREE FLOAT MARKET CAPITALIZATION ASE20 (2014=1000)

	812.4	811.3	-0.13%	-8.94%
--	-------	-------	--------	--------

STOCK PRICE INDEX WEIGHTED BY MARKET CAPITALIZATION (1991=1000)

	WEDNESDAY 10/06/2020	THURSDAY 11/06/2020	% CHANGE	
			DAY BEFORE	YTD
GENERAL	3044.0	3033.8	-0.33%	-13.66%
BANKS	5844.6	5799.2	-0.78%	-18.27%
INSURANCE	1338.2	1339.1	0.07%	4.41%
SERVICES	675.8	680.5	0.70%	-7.51%
INDUSTRY	2419.1	2418.3	-0.03%	-7.46%

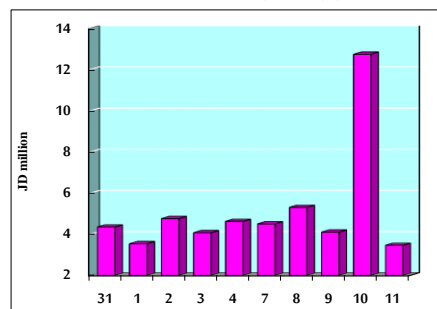
STOCK PRICE MARKET INDEX WEIGHTED BY FREE FLOAT MARKET CAP. (2012=1000)

	WEDNESDAY 10/06/2020	THURSDAY 11/06/2020	% CHANGE	
			DAY BEFORE	YTD
FIRST MARKET	875.0	874.0	-0.12%	-8.57%
SECOND MARKET	763.9	764.1	0.02%	-8.61%

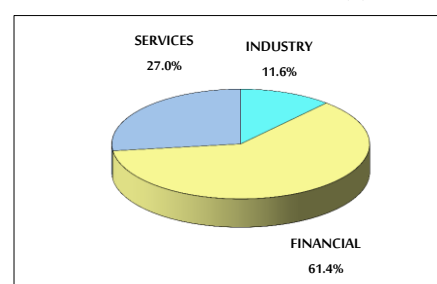
MARKET CAPITALIZATION (JD)

	12,971,451,498	12,934,277,659	-0.29%	-13.28%
--	----------------	----------------	--------	---------

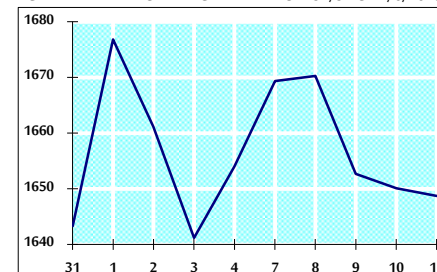
VALUE TRADED FROM 31/5 TO 11/6/2020



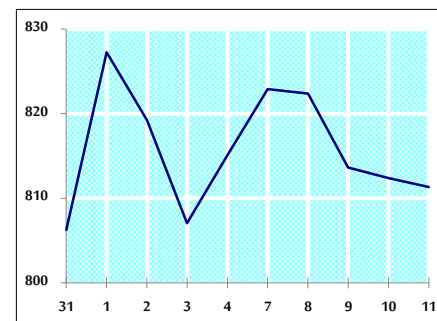
VALUE TRADED BY SECTOR THURSDAY 11/6/2020



GENERAL FREE FLOAT PRICE INDEX FROM 31/5 TO 11/6/2020



ASE20 FREE FLOAT PRICE INDEX FROM 31/5 TO 11/6/2020



GENERAL PRICE INDEX FROM 31/5 TO 11/6/2020

