

Daily Summary for Amman Stock Exchange

VALUE TRADED (JD)

	2019	2020	NET CHANGE	CHANGE (%)
Daily	6,849,987	12,738,389	5,888,402	85.96%
Cumulative(1/6-10/6)	34,392,814	43,661,031	9,268,217	26.95%
Cumulative(2/1-10/6)	605,277,648	359,293,500	-245,984,148	-40.64%

NO. OF SHARES TRADED

	2019	2020	NET CHANGE	CHANGE (%)
Daily	6,945,687	14,435,714	7,490,027	107.84%
Cumulative(1/6-10/6)	36,154,120	52,862,153	16,708,033	46.21%
Cumulative(2/1-10/6)	477,584,592	341,924,367	-135,660,225	-28.41%

NO. OF TRANSACTIONS

	2019	2020	NET CHANGE	CHANGE (%)
Daily	2,702	1,734	-968	-35.83%
Cumulative(1/6-10/6)	17,548	15,948	-1,600	-9.12%
Cumulative(2/1-10/6)	217,091	140,372	-76,719	-35.34%

SOME FINANCIAL RATIOS FOR THE ASE (10/6/2020)

SECTOR	P/E	P/BV	DIVIDEND YIELD (%)	TURNOVER (%)
FINANCIAL	9.547	0.788	0.240	0.037
SERVICES	12.990	0.994	4.758	0.676
INDUSTRY	15.546	1.284	0.621	0.247
OVERALL	10.104	0.901	0.981	0.217

STOCK PRICE INDEX WEIGHTED BY FREE FLOAT MARKET CAPITALIZATION (1999=1000)

	TUESDAY 09/06/2020	WEDNESDAY 10/06/2020	% CHANGE	
			DAY BEFORE	YTD
GENERAL	1652.7	1650.1	-0.16%	-9.10%
FINANCIAL	2182.2	2167.7	-0.66%	-11.52%
SERVICES	1198.7	1208.6	0.83%	-6.53%
INDUSTRY	1823.9	1829.5	0.30%	-1.48%

STOCK PRICE INDEX WEIGHTED BY FREE FLOAT MARKET CAPITALIZATION ASE20 (2014=1000)

	813.6	812.4	-0.15%	-8.82%
--	-------	-------	--------	--------

STOCK PRICE INDEX WEIGHTED BY MARKET CAPITALIZATION (1991=1000)

	TUESDAY 09/06/2020	WEDNESDAY 10/06/2020	% CHANGE	
			DAY BEFORE	YTD
GENERAL	3041.4	3044.0	0.09%	-13.37%
BANKS	5868.2	5844.6	-0.40%	-17.63%
INSURANCE	1336.9	1338.2	0.09%	4.34%
SERVICES	678.9	675.8	-0.46%	-8.15%
INDUSTRY	2385.5	2419.1	1.41%	-7.43%

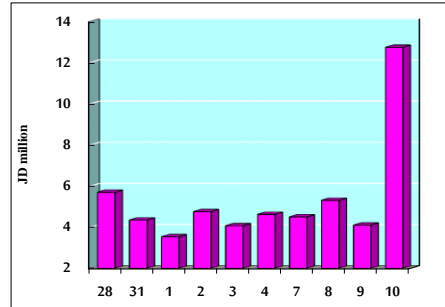
STOCK PRICE MARKET INDEX WEIGHTED BY FREE FLOAT MARKET CAP. (2012=1000)

	TUESDAY 09/06/2020	WEDNESDAY 10/06/2020	% CHANGE	
			DAY BEFORE	YTD
FIRST MARKET	875.8	875.0	-0.09%	-8.46%
SECOND MARKET	767.5	763.9	-0.47%	-8.63%

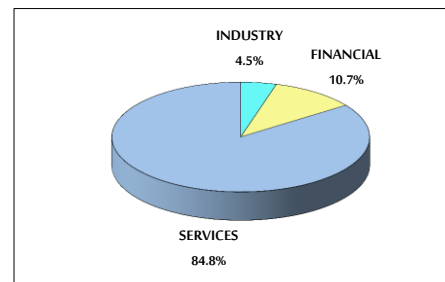
MARKET CAPITALIZATION (JD)

	12,960,912,598	12,971,451,498	0.08%	-13.03%
--	----------------	----------------	-------	---------

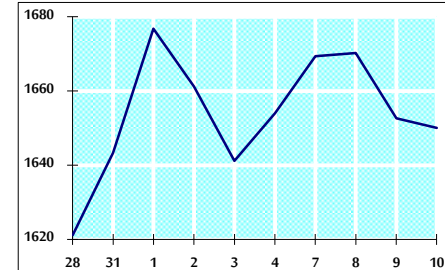
VALUE TRADED FROM 28/5 TO 10/6/2020



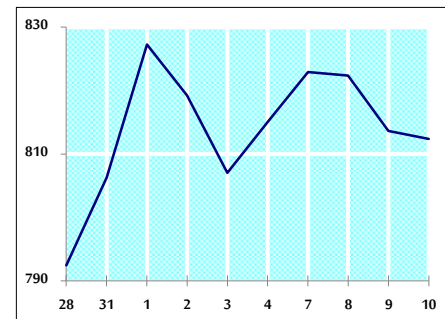
VALUE TRADED BY SECTOR WEDNESDAY 10/6/2020



GENERAL FREE FLOAT PRICE INDEX FROM 28/5 TO 10/6/2020



ASE20 FREE FLOAT PRICE INDEX FROM 28/5 TO 10/6/2020



GENERAL PRICE INDEX FROM 28/5 TO 10/6/2020

