

## Daily Summary for Amman Stock Exchange

### VALUE TRADED (JD)

	2019	2020	NET CHANGE	CHANGE (%)
Daily	4,153,428	4,103,697	-49,731	-1.20%
Cumulative(1/6-9/6)	27,542,827	30,922,642	3,379,815	12.27%
Cumulative(2/1-9/6)	598,427,661	346,555,111	-251,872,550	-42.09%

### NO. OF SHARES TRADED

	2019	2020	NET CHANGE	CHANGE (%)
Daily	5,225,118	4,398,593	-826,525	-15.82%
Cumulative(1/6-9/6)	29,208,433	38,426,439	9,218,006	31.56%
Cumulative(2/1-9/6)	470,638,905	327,488,653	-143,150,252	-30.42%

### NO. OF TRANSACTIONS

	2019	2020	NET CHANGE	CHANGE (%)
Daily	2,548	2,046	-502	-19.70%
Cumulative(1/6-9/6)	14,846	14,214	-632	-4.26%
Cumulative(2/1-9/6)	214,389	138,638	-75,751	-35.33%

### SOME FINANCIAL RATIOS FOR THE ASE (9/6/2020)

SECTOR	P/E	P/BV	DIVIDEND YIELD (%)	TURNOVER (%)
FINANCIAL	9.613	0.790	0.239	0.050
SERVICES	12.998	0.994	4.812	0.042
INDUSTRY	15.298	1.267	0.628	0.190
OVERALL	10.096	0.900	0.991	0.066

### STOCK PRICE INDEX WEIGHTED BY FREE FLOAT MARKET CAPITALIZATION (1999=1000)

	MONDAY 08/06/2020	TUESDAY 09/06/2020	% CHANGE	
			DAY BEFORE	YTD
GENERAL	1670.3	1652.7	-1.05%	-8.95%
FINANCIAL	2203.5	2182.2	-0.97%	-10.93%
SERVICES	1218.0	1198.7	-1.58%	-7.29%
INDUSTRY	1828.5	1823.9	-0.25%	-1.78%

### STOCK PRICE INDEX WEIGHTED BY FREE FLOAT MARKET CAPITALIZATION ASE20 (2014=1000)

	822.4	813.6	-1.06%	-8.68%
--	-------	-------	--------	--------

### STOCK PRICE INDEX WEIGHTED BY MARKET CAPITALIZATION (1991=1000)

	MONDAY 08/06/2020	TUESDAY 09/06/2020	% CHANGE	
			DAY BEFORE	YTD
GENERAL	3063.0	3041.4	-0.71%	-13.44%
BANKS	5915.2	5868.2	-0.79%	-17.30%
INSURANCE	1342.8	1336.9	-0.44%	4.24%
SERVICES	683.8	678.9	-0.71%	-7.73%
INDUSTRY	2397.2	2385.5	-0.49%	-8.71%

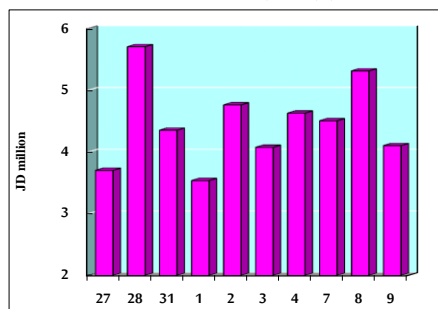
### STOCK PRICE MARKET INDEX WEIGHTED BY FREE FLOAT MARKET CAP. (2012=1000)

	MONDAY 08/06/2020	TUESDAY 09/06/2020	% CHANGE	
			DAY BEFORE	YTD
FIRST MARKET	884.7	875.8	-1.00%	-8.37%
SECOND MARKET	777.1	767.5	-1.24%	-8.20%

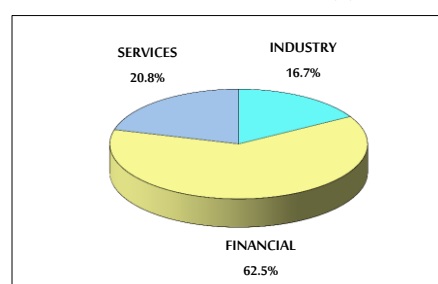
### MARKET CAPITALIZATION (JD)

	13,046,563,148	12,960,912,598	-0.66%	-13.10%
--	----------------	----------------	--------	---------

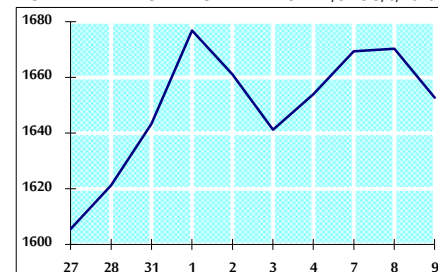
### VALUE TRADED FROM 27/5 TO 9/6/2020



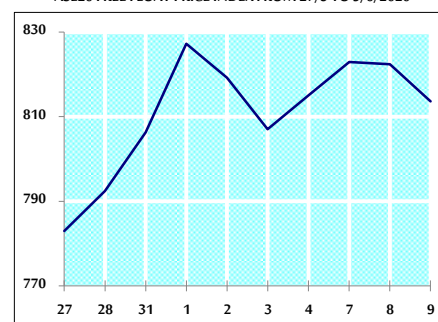
### VALUE TRADED BY SECTOR TUESDAY 9/6/2020



### GENERAL FREE FLOAT PRICE INDEX FROM 27/5 TO 9/6/2020



### ASE20 FREE FLOAT PRICE INDEX FROM 27/5 TO 9/6/2020



### GENERAL PRICE INDEX FROM 27/5 TO 9/6/2020

