

Daily Summary for Amman Stock Exchange

VALUE TRADED (JD)

	2019	2020	NET CHANGE	CHANGE (%)
Daily	5,314,316	5,311,473	-2,843	-0.05%
Cumulative(1/6-8/6)	23,389,399	26,818,945	3,429,546	14.66%
Cumulative(2/1-8/6)	594,274,233	342,451,414	-251,822,819	-42.37%

NO. OF SHARES TRADED

	2019	2020	NET CHANGE	CHANGE (%)
Daily	4,347,079	5,966,622	1,619,543	37.26%
Cumulative(1/6-8/6)	23,983,315	34,027,846	10,044,531	41.88%
Cumulative(2/1-8/6)	465,413,787	323,090,060	-142,323,727	-30.58%

NO. OF TRANSACTIONS

	2019	2020	NET CHANGE	CHANGE (%)
Daily	2,470	2,398	-72	-2.91%
Cumulative(1/6-8/6)	12,298	12,168	-130	-1.06%
Cumulative(2/1-8/6)	211,841	136,592	-75,249	-35.52%

SOME FINANCIAL RATIOS FOR THE ASE (8/6/2020)

SECTOR	P/E	P/BV	DIVIDEND YIELD (%)	TURNOVER (%)
FINANCIAL	9.698	0.797	0.227	0.066
SERVICES	13.113	1.003	4.770	0.089
INDUSTRY	15.339	1.269	0.627	0.205
OVERALL	10.170	0.907	0.980	0.090

STOCK PRICE INDEX WEIGHTED BY FREE FLOAT MARKET CAPITALIZATION (1999=1000)

	SUNDAY 07/06/2020	MONDAY 08/06/2020	% CHANGE	
			DAY BEFORE	YTD
GENERAL	1669.4	1670.3	0.05%	-7.98%
FINANCIAL	2206.7	2203.5	-0.15%	-10.06%
SERVICES	1210.7	1218.0	0.60%	-5.81%
INDUSTRY	1827.7	1828.5	0.04%	-1.54%

STOCK PRICE INDEX WEIGHTED BY FREE FLOAT MARKET CAPITALIZATION ASE20 (2014=1000)

	822.9	822.4	-0.07%	-7.70%
--	-------	-------	--------	--------

STOCK PRICE INDEX WEIGHTED BY MARKET CAPITALIZATION (1991=1000)

	SUNDAY 07/06/2020	MONDAY 08/06/2020	% CHANGE	
			DAY BEFORE	YTD
GENERAL	3063.2	3063.0	-0.01%	-12.83%
BANKS	5927.1	5915.2	-0.20%	-16.64%
INSURANCE	1341.4	1342.8	0.10%	4.70%
SERVICES	681.1	683.8	0.38%	-7.06%
INDUSTRY	2393.4	2397.2	0.15%	-8.27%

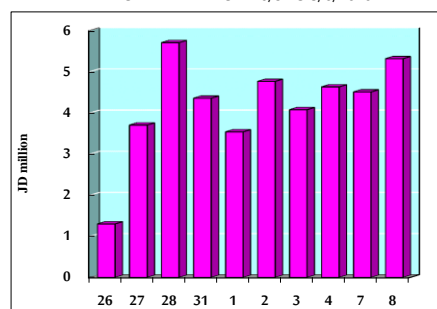
STOCK PRICE MARKET INDEX WEIGHTED BY FREE FLOAT MARKET CAP. (2012=1000)

	SUNDAY 07/06/2020	MONDAY 08/06/2020	% CHANGE	
			DAY BEFORE	YTD
FIRST MARKET	885.3	884.7	-0.07%	-7.44%
SECOND MARKET	772.0	777.1	0.66%	-7.05%

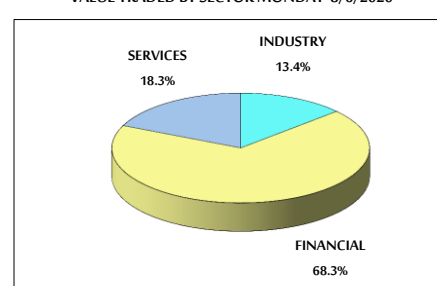
MARKET CAPITALIZATION (JD)

	13,044,293,488	13,046,563,148	0.02%	-12.53%
--	----------------	----------------	-------	---------

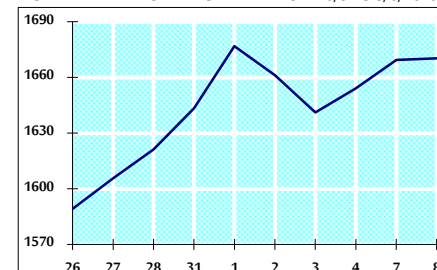
VALUE TRADED FROM 26/5 TO 8/6/2020



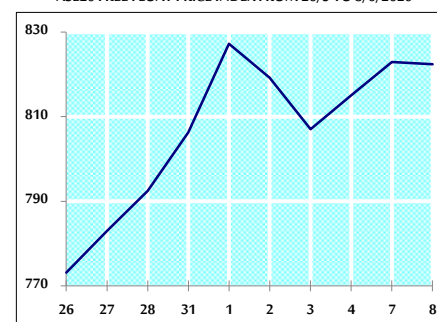
VALUE TRADED BY SECTOR MONDAY 8/6/2020



GENERAL FREE FLOAT PRICE INDEX FROM 26/5 TO 8/6/2020



ASE20 FREE FLOAT PRICE INDEX FROM 26/5 TO 8/6/2020



GENERAL PRICE INDEX FROM 26/5 TO 8/6/2020

