

Daily Summary for Amman Stock Exchange

VALUE TRADED (JD)

	2019	2020	NET CHANGE	CHANGE (%)
Daily	2,962,819	2,178,127	-784,692	-26.48%
Cumulative(1/5-18/5)	45,337,519	10,374,859	-34,962,660	-77.12%
Cumulative(2/1-18/5)	533,464,063	294,740,071	-238,723,992	-44.75%

NO. OF SHARES TRADED

	2019	2020	NET CHANGE	CHANGE (%)
Daily	3,481,279	1,563,856	-1,917,423	-55.08%
Cumulative(1/5-18/5)	41,905,575	7,657,306	-34,248,269	-81.73%
Cumulative(2/1-18/5)	403,458,635	268,862,795	-134,595,840	-33.36%

NO. OF TRANSACTIONS

	2019	2020	NET CHANGE	CHANGE (%)
Daily	1,702	689	-1,013	-59.52%
Cumulative(1/5-18/5)	19,693	3,327	-16,366	-83.11%
Cumulative(2/1-18/5)	183,506	117,395	-66,111	-36.03%

SOME FINANCIAL RATIOS FOR THE ASE (18/5/2020)

SECTOR	P/E	P/BV	DIVIDEND YIELD (%)	TURNOVER (%)
FINANCIAL	8.891	0.736	0.456	0.029
SERVICES	13.146	1.012	5.217	0.012
INDUSTRY	14.820	1.276	4.168	0.015
OVERALL	9.584	0.863	2.174	0.023

STOCK PRICE INDEX WEIGHTED BY FREE FLOAT MARKET CAPITALIZATION (1999=1000)

	SUNDAY 17/05/2020	MONDAY 18/05/2020	% CHANGE	
			DAY BEFORE	YTD
GENERAL	1594.5	1582.3	-0.76%	-12.83%
FINANCIAL	2077.1	2059.5	-0.85%	-15.94%
SERVICES	1179.7	1169.2	-0.90%	-9.58%
INDUSTRY	1830.0	1829.9	-0.01%	-1.46%

STOCK PRICE INDEX WEIGHTED BY FREE FLOAT MARKET CAPITALIZATION ASE20 (2014=1000)

	775.5	769.0	-0.85%	-13.69%
--	-------	-------	--------	---------

STOCK PRICE INDEX WEIGHTED BY MARKET CAPITALIZATION (1991=1000)

	SUNDAY 17/05/2020	MONDAY 18/05/2020	% CHANGE	
			DAY BEFORE	YTD
GENERAL	2921.3	2903.0	-0.63%	-17.38%
BANKS	5470.0	5414.5	-1.01%	-23.69%
INSURANCE	1318.3	1314.0	-0.33%	2.46%
SERVICES	693.5	690.0	-0.49%	-6.21%
INDUSTRY	2346.7	2347.7	0.04%	-10.16%

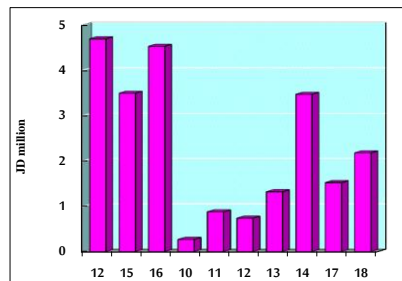
STOCK PRICE MARKET INDEX WEIGHTED BY FREE FLOAT MARKET CAP. (2012=1000)

	SUNDAY 17/05/2020	MONDAY 18/05/2020	% CHANGE	
			DAY BEFORE	YTD
FIRST MARKET	840.9	834.4	-0.77%	-12.70%
SECOND MARKET	749.5	744.1	-0.72%	-10.99%

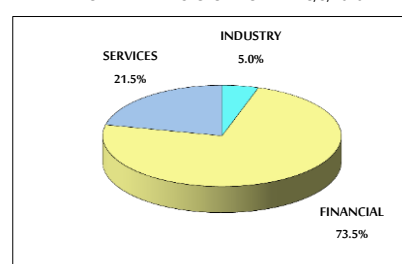
MARKET CAPITALIZATION (JD)

	12,513,769,087	12,441,153,871	-0.58%	-16.59%
--	----------------	----------------	--------	---------

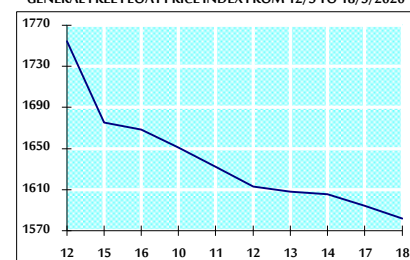
VALUE TRADED FROM 12/3 TO 18/5/2020



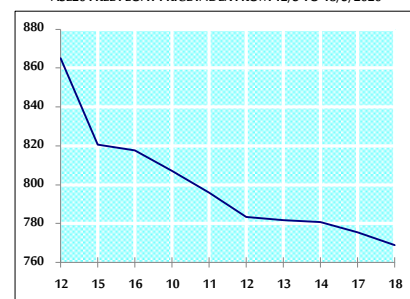
VALUE TRADED BY SECTOR MONDAY 18/5/2020



GENERAL FREE FLOAT PRICE INDEX FROM 12/3 TO 18/5/2020



ASE20 FREE FLOAT PRICE INDEX FROM 12/3 TO 18/5/2020



GENERAL PRICE INDEX FROM 12/3 TO 18/5/2020

