

Daily Summary for Amman Stock Exchange

VALUE TRADED (JD)

	2019	2020	NET CHANGE	CHANGE (%)
Daily	4,259,349	4,352,896	93,547	2.20%
Cumulative(1/5-31/5)	82,758,290	31,267,257	-51,491,033	-62.22%
Cumulative(2/1-31/5)	570,884,834	315,632,469	-255,252,365	-44.71%

NO. OF SHARES TRADED

	2019	2020	NET CHANGE	CHANGE (%)
Daily	3,538,557	6,680,619	3,142,062	88.80%
Cumulative(1/5-31/5)	79,877,412	27,856,725	-52,020,687	-65.13%
Cumulative(2/1-31/5)	441,430,472	289,062,214	-152,368,258	-34.52%

NO. OF TRANSACTIONS

	2019	2020	NET CHANGE	CHANGE (%)
Daily	1,746	1,627	-119	-6.82%
Cumulative(1/5-31/5)	35,730	10,356	-25,374	-71.02%
Cumulative(2/1-31/5)	199,543	124,424	-75,119	-37.65%

SOME FINANCIAL RATIOS FOR THE ASE (31/5/2020)

SECTOR	P/E	P/BV	DIVIDEND YIELD (%)	TURNOVER (%)
FINANCIAL	9.432	0.775	0.262	0.073
SERVICES	13.158	1.006	4.649	0.017
INDUSTRY	13.194	1.275	0.908	0.392
OVERALL	9.745	0.892	1.031	0.100

STOCK PRICE INDEX WEIGHTED BY FREE FLOAT MARKET CAPITALIZATION (1999=1000)

	THURSDAY 28/05/2020	SUNDAY 31/05/2020	% CHANGE	
			DAY BEFORE	YTD
GENERAL	1621.2	1643.3	1.37%	-9.47%
FINANCIAL	2120.4	2160.3	1.88%	-11.82%
SERVICES	1197.8	1202.1	0.36%	-7.03%
INDUSTRY	1819.5	1825.1	0.30%	-1.72%

STOCK PRICE INDEX WEIGHTED BY FREE FLOAT MARKET CAPITALIZATION ASE20 (2014=1000)

	792.4	806.3	1.74%	-9.51%
--	-------	-------	-------	--------

STOCK PRICE INDEX WEIGHTED BY MARKET CAPITALIZATION (1991=1000)

	THURSDAY 28/05/2020	SUNDAY 31/05/2020	% CHANGE	
			DAY BEFORE	YTD
GENERAL	2987.1	3012.4	0.85%	-14.27%
BANKS	5657.3	5738.6	1.44%	-19.12%
INSURANCE	1329.9	1336.0	0.45%	4.17%
SERVICES	686.7	683.5	-0.47%	-7.10%
INDUSTRY	2391.1	2401.1	0.42%	-8.11%

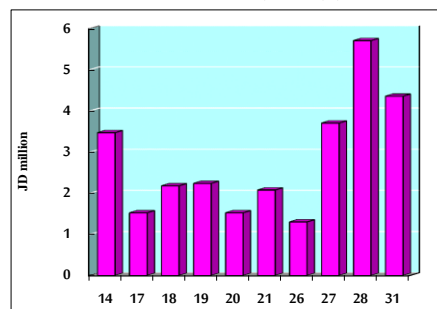
STOCK PRICE MARKET INDEX WEIGHTED BY FREE FLOAT MARKET CAP. (2012=1000)

	THURSDAY 28/05/2020	SUNDAY 31/05/2020	% CHANGE	
			DAY BEFORE	YTD
FIRST MARKET	856.0	869.5	1.57%	-9.04%
SECOND MARKET	754.8	759.3	0.59%	-9.18%

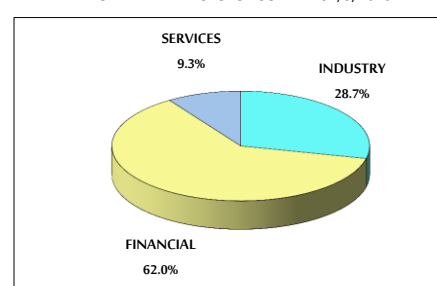
MARKET CAPITALIZATION (JD)

	12,763,811,955	12,858,289,138	0.74%	-13.79%
--	----------------	----------------	-------	---------

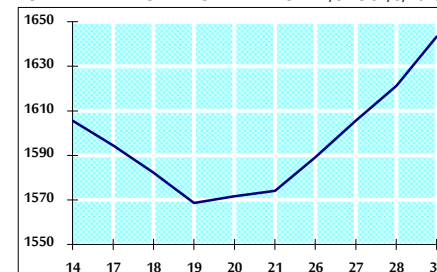
VALUE TRADED FROM 14/5 TO 31/5/2020



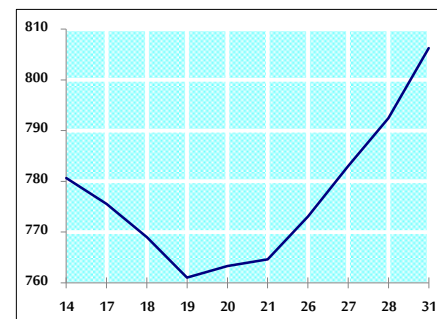
VALUE TRADED BY SECTOR SUNDAY 31/5/2020



GENERAL FREE FLOAT PRICE INDEX FROM 14/5 TO 31/5/2020



ASE20 FREE FLOAT PRICE INDEX FROM 14/5 TO 31/5/2020



GENERAL PRICE INDEX FROM 14/5 TO 31/5/2020

