

## Daily Summary for Amman Stock Exchange

### VALUE TRADED (JD)

	2019	2020	NET CHANGE	CHANGE (%)
Daily	3,921,907	738,019	-3,183,888	-81.18%
Cumulative(1/5-12/5)	31,340,409	1,886,734	-29,453,675	-93.98%
Cumulative(2/1-12/5)	519,466,953	286,251,946	-233,215,007	-44.90%

### NO. OF SHARES TRADED

	2019	2020	NET CHANGE	CHANGE (%)
Daily	3,704,277	381,276	-3,323,001	-89.71%
Cumulative(1/5-12/5)	25,751,287	1,643,640	-24,107,647	-93.62%
Cumulative(2/1-12/5)	387,304,347	262,849,129	-124,455,218	-32.13%

### NO. OF TRANSACTIONS

	2019	2020	NET CHANGE	CHANGE (%)
Daily	1,861	293	-1,568	-84.26%
Cumulative(1/5-12/5)	12,769	572	-12,197	-95.52%
Cumulative(2/1-12/5)	176,582	114,640	-61,942	-35.08%

### SOME FINANCIAL RATIOS FOR THE ASE (12/5/2020)

SECTOR	P/E	P/BV	DIVIDEND YIELD (%)	TURNOVER (%)
FINANCIAL	8.865	0.763	2.158	0.004
SERVICES	13.723	1.027	5.755	0.011
INDUSTRY	15.157	1.277	4.176	0.006
OVERALL	9.753	0.895	3.275	0.006

### STOCK PRICE INDEX WEIGHTED BY FREE FLOAT MARKET CAPITALIZATION (1999=1000)

	MONDAY 11/05/2020	TUESDAY 12/05/2020	% CHANGE	
			DAY BEFORE	YTD
GENERAL	1632.6	1613.0	-1.20%	-11.14%
FINANCIAL	2145.6	2113.9	-1.48%	-13.72%
SERVICES	1187.4	1178.7	-0.73%	-8.84%
INDUSTRY	1847.1	1838.0	-0.49%	-1.02%

### STOCK PRICE INDEX WEIGHTED BY FREE FLOAT MARKET CAPITALIZATION ASE20 (2014=1000)

	795.8	783.5	-1.55%	-12.07%
--	-------	-------	--------	---------

### STOCK PRICE INDEX WEIGHTED BY MARKET CAPITALIZATION (1991=1000)

	MONDAY 11/05/2020	TUESDAY 12/05/2020	% CHANGE	
			DAY BEFORE	YTD
GENERAL	3004.1	2963.0	-1.37%	-15.68%
BANKS	5699.2	5602.4	-1.70%	-21.04%
INSURANCE	1317.7	1316.6	-0.08%	2.66%
SERVICES	698.8	695.9	-0.41%	-5.41%
INDUSTRY	2381.7	2349.9	-1.33%	-10.07%

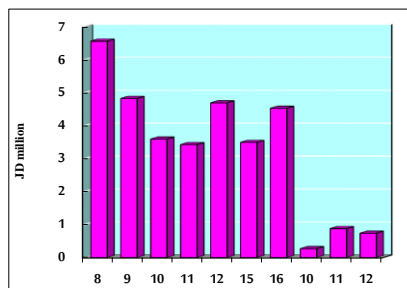
### STOCK PRICE MARKET INDEX WEIGHTED BY FREE FLOAT MARKET CAP. (2012=1000)

	MONDAY 11/05/2020	TUESDAY 12/05/2020	% CHANGE	
			DAY BEFORE	YTD
FIRST MARKET	861.1	849.4	-1.36%	-11.14%
SECOND MARKET	771.1	767.4	-0.47%	-8.21%

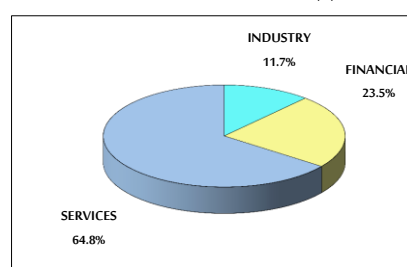
### MARKET CAPITALIZATION (JD)

	12,840,073,569	12,677,179,243	-1.27%	-15.00%
--	----------------	----------------	--------	---------

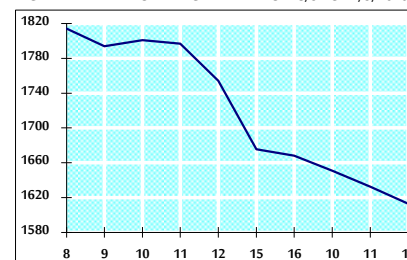
### VALUE TRADED FROM 8/3 TO 12/5/2020



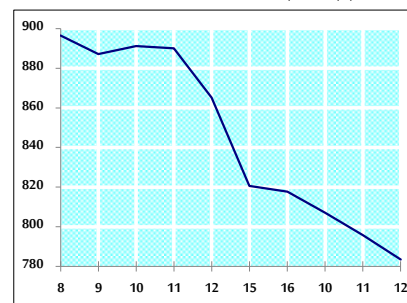
### VALUE TRADED BY SECTOR TUESDAY 12/5/2020



### GENERAL FREE FLOAT PRICE INDEX FROM 8/3 TO 12/5/2020



### ASE20 FREE FLOAT PRICE INDEX FROM 8/3 TO 12/5/2020



### GENERAL PRICE INDEX FROM 8/3 TO 12/5/2020

