

Daily Summary for Amman Stock Exchange

VALUE TRADED (JD)

	2018	2019	NET CHANGE	CHANGE (%)
Daily	6,091,557	3,006,077	-3,085,480	-50.65%
Cumulative(1/12-15/12)	43,981,957	59,552,711	15,570,754	35.40%
Cumulative(2/1-15/12)	1,771,228,819	1,486,523,769	-284,705,050	-16.07%

NO. OF SHARES TRADED

	2018	2019	NET CHANGE	CHANGE (%)
Daily	3,937,914	3,411,779	-526,135	-13.36%
Cumulative(1/12-15/12)	32,409,217	61,413,609	29,004,392	89.49%
Cumulative(2/1-15/12)	1,091,029,746	1,172,318,840	81,289,094	7.45%

NO. OF TRANSACTIONS

	2018	2019	NET CHANGE	CHANGE (%)
Daily	1,495	1,869	374	25.02%
Cumulative(1/12-15/12)	15,935	19,805	3,870	24.29%
Cumulative(2/1-15/12)	492,073	485,612	-6,461	-1.31%

SOME FINANCIAL RATIOS FOR THE ASE (15/12/2019)

SECTOR	P/E	P/BV	DIVIDEND YIELD (%)	TURNOVER (%)
FINANCIAL	10.716	0.959	6.002	0.050
SERVICES	14.623	1.089	5.738	0.063
INDUSTRY	16.679	1.369	3.882	0.036
OVERALL	11.319	1.051	5.742	0.051

STOCK PRICE INDEX WEIGHTED BY FREE FLOAT MARKET CAPITALIZATION (1999=1000)

	THURSDAY 12/12/2019	SUNDAY 15/12/2019	% CHANGE	
			DAY BEFORE	YTD
GENERAL	1803.1	1811.1	0.45%	-5.12%
FINANCIAL	2438.6	2443.3	0.19%	-7.89%
SERVICES	1287.9	1293.3	0.42%	1.05%
INDUSTRY	1802.9	1827.2	1.35%	-2.95%

STOCK PRICE INDEX WEIGHTED BY FREE FLOAT MARKET CAPITALIZATION ASE20 (2014=1000)

	881.7	886.0	0.49%	-4.35%
--	-------	-------	-------	--------

STOCK PRICE INDEX WEIGHTED BY MARKET CAPITALIZATION (1991=1000)

	THURSDAY 12/12/2019	SUNDAY 15/12/2019	% CHANGE	
			DAY BEFORE	YTD
GENERAL	3476.6	3499.9	0.67%	-7.83%
BANKS	7032.4	7075.2	0.61%	-14.20%
INSURANCE	1305.1	1303.7	-0.11%	-5.29%
SERVICES	733.7	736.2	0.34%	-7.60%
INDUSTRY	2561.3	2587.6	1.03%	11.95%

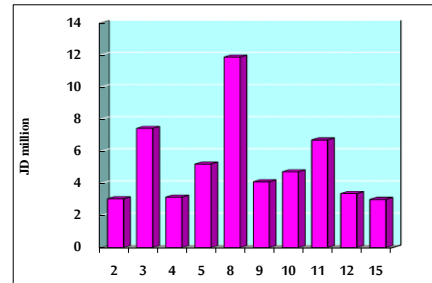
STOCK PRICE MARKET INDEX WEIGHTED BY FREE FLOAT MARKET CAP. (2012=1000)

	THURSDAY 12/12/2019	SUNDAY 15/12/2019	% CHANGE	
			DAY BEFORE	YTD
FIRST MARKET	948.7	953.3	0.49%	-5.73%
SECOND MARKET	845.6	845.2	-0.05%	1.63%

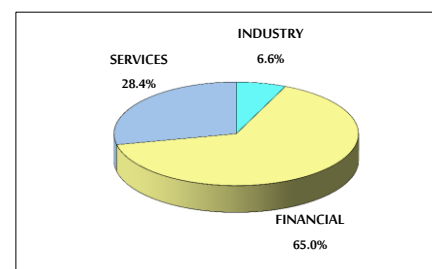
MARKET CAPITALIZATION (JD)

	14,777,472,510	14,808,297,761	0.21%	-8.15%
--	----------------	----------------	-------	--------

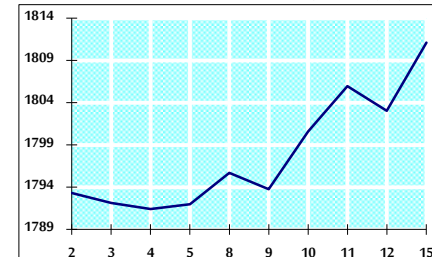
VALUE TRADED FROM 2/12 TO 15/12/2019



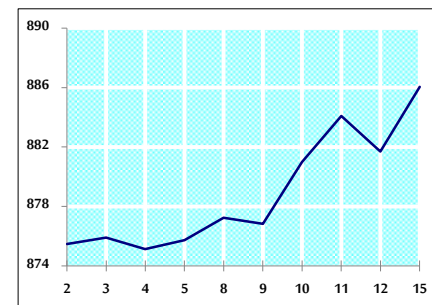
VALUE TRADED BY SECTOR SUNDAY 15/12/2019



GENERAL FREE FLOAT PRICE INDEX FROM 2/12 TO 15/12/2019



ASE20 FREE FLOAT PRICE INDEX FROM 2/12 TO 15/12/2019



GENERAL PRICE INDEX FROM 2/12 TO 15/12/2019

