

Daily Summary for Amman Stock Exchange

VALUE TRADED (JD)

	2018	2019	NET CHANGE	CHANGE (%)
Daily	149,193,595	3,078,651	-146,114,944	-97.94%
Cumulative(1/12-26/12)	241,602,624	144,430,749	-97,171,875	-40.22%
Cumulative(2/1-26/12)	1,968,849,486	1,571,401,807	-397,447,679	-20.19%

NO. OF SHARES TRADED

	2018	2019	NET CHANGE	CHANGE (%)
Daily	18,299,908	2,954,248	-15,345,660	-83.86%
Cumulative(1/12-26/12)	83,191,554	123,767,832	40,576,278	48.77%
Cumulative(2/1-26/12)	1,141,812,083	1,234,673,063	92,860,980	8.13%

NO. OF TRANSACTIONS

	2018	2019	NET CHANGE	CHANGE (%)
Daily	1,823	1,499	-324	-17.77%
Cumulative(1/12-26/12)	31,984	32,195	211	0.66%
Cumulative(2/1-26/12)	508,122	498,002	-10,120	-1.99%

SOME FINANCIAL RATIOS FOR THE ASE (26/12/2019)

SECTOR	P/E	P/BV	DIVIDEND YIELD (%)	TURNOVER (%)
FINANCIAL	10.767	0.963	5.974	0.049
SERVICES	14.608	1.088	5.744	0.037
INDUSTRY	16.847	1.383	3.843	0.037
OVERALL	11.354	1.055	5.725	0.044

STOCK PRICE INDEX WEIGHTED BY FREE FLOAT MARKET CAPITALIZATION (1999=1000)

	TUESDAY 24/12/2019	THURSDAY 26/12/2019	% CHANGE	
			DAY BEFORE	YTD
GENERAL	1808.1	1812.4	0.24%	-5.05%
FINANCIAL	2443.9	2450.8	0.29%	-7.61%
SERVICES	1287.8	1289.9	0.16%	0.79%
INDUSTRY	1830.7	1831.4	0.04%	-2.72%

STOCK PRICE INDEX WEIGHTED BY FREE FLOAT MARKET CAPITALIZATION ASE20 (2014=1000)

	885.8	887.7	0.22%	-4.17%
--	-------	-------	-------	--------

STOCK PRICE INDEX WEIGHTED BY MARKET CAPITALIZATION (1991=1000)

	TUESDAY 24/12/2019	THURSDAY 26/12/2019	% CHANGE	
			DAY BEFORE	YTD
GENERAL	3501.4	3510.7	0.27%	-7.54%
BANKS	7105.4	7124.0	0.26%	-13.61%
INSURANCE	1284.5	1281.3	-0.25%	-6.92%
SERVICES	732.9	732.3	-0.09%	-8.10%
INDUSTRY	2572.7	2585.0	0.48%	11.84%

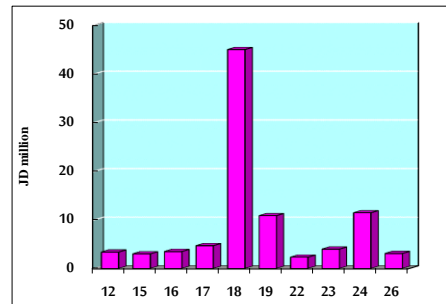
STOCK PRICE MARKET INDEX WEIGHTED BY FREE FLOAT MARKET CAP. (2012=1000)

	TUESDAY 24/12/2019	THURSDAY 26/12/2019	% CHANGE	
			DAY BEFORE	YTD
FIRST MARKET	952.7	955.5	0.29%	-5.51%
SECOND MARKET	836.5	833.9	-0.30%	0.28%

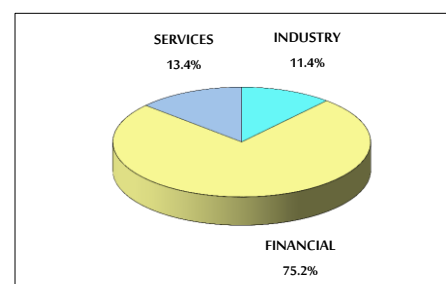
MARKET CAPITALIZATION (JD)

	14,844,936,224	14,882,695,287	0.25%	-7.69%
--	----------------	----------------	-------	--------

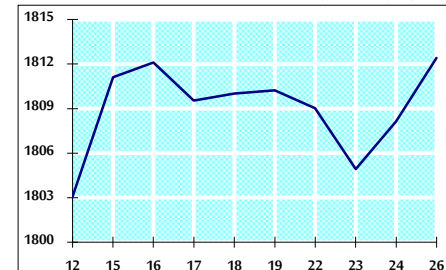
VALUE TRADED FROM 12/12 TO 26/12/2019



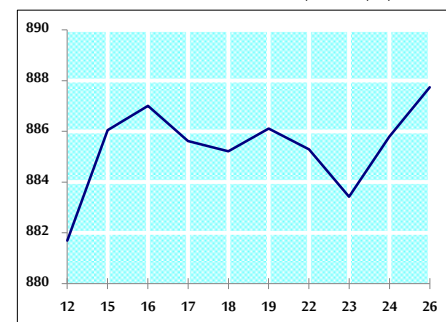
VALUE TRADED BY SECTOR THURSDAY 26/12/2019



GENERAL FREE FLOAT PRICE INDEX FROM 12/12 TO 26/12/2019



ASE20 FREE FLOAT PRICE INDEX FROM 12/12 TO 26/12/2019



GENERAL PRICE INDEX FROM 12/12 TO 26/12/2019

