

Daily Summary for Amman Stock Exchange

VALUE TRADED (JD)

	2018	2019	NET CHANGE	CHANGE (%)
Daily	5,199,083	45,005,462	39,806,379	765.64%
Cumulative(1/12-18/12)	60,580,659	112,726,337	52,145,678	86.08%
Cumulative(2/1-18/12)	1,787,827,521	1,539,697,395	-248,130,126	-13.88%

NO. OF SHARES TRADED

	2018	2019	NET CHANGE	CHANGE (%)
Daily	3,106,143	30,536,665	27,430,522	883.11%
Cumulative(1/12-18/12)	43,310,392	98,793,461	55,483,069	128.11%
Cumulative(2/1-18/12)	1,101,930,921	1,209,698,692	107,767,771	9.78%

NO. OF TRANSACTIONS

	2018	2019	NET CHANGE	CHANGE (%)
Daily	2,224	1,839	-385	-17.31%
Cumulative(1/12-18/12)	22,148	25,079	2,931	13.23%
Cumulative(2/1-18/12)	498,286	490,886	-7,400	-1.49%

SOME FINANCIAL RATIOS FOR THE ASE (18/12/2019)

SECTOR	P/E	P/BV	DIVIDEND YIELD (%)	TURNOVER (%)
FINANCIAL	10.707	0.958	6.007	0.705
SERVICES	14.642	1.091	5.731	0.028
INDUSTRY	16.974	1.393	3.814	0.057
OVERALL	11.338	1.053	5.733	0.459

STOCK PRICE INDEX WEIGHTED BY FREE FLOAT MARKET CAPITALIZATION (1999=1000)

	TUESDAY 17/12/2019	WEDNESDAY 18/12/2019	% CHANGE	
			DAY BEFORE	YTD
GENERAL	1809.5	1810.0	0.03%	-5.18%
FINANCIAL	2444.4	2440.7	-0.15%	-7.99%
SERVICES	1288.9	1292.8	0.31%	1.02%
INDUSTRY	1832.7	1840.2	0.41%	-2.26%

STOCK PRICE INDEX WEIGHTED BY FREE FLOAT MARKET CAPITALIZATION ASE20 (2014=1000)

	885.6	885.2	-0.05%	-4.44%
--	-------	-------	--------	--------

STOCK PRICE INDEX WEIGHTED BY MARKET CAPITALIZATION (1991=1000)

	TUESDAY 17/12/2019	WEDNESDAY 18/12/2019	% CHANGE	
			DAY BEFORE	YTD
GENERAL	3499.8	3505.6	0.17%	-7.68%
BANKS	7074.8	7070.5	-0.06%	-14.26%
INSURANCE	1299.5	1293.4	-0.46%	-6.03%
SERVICES	735.9	738.3	0.32%	-7.35%
INDUSTRY	2588.8	2605.4	0.64%	12.72%

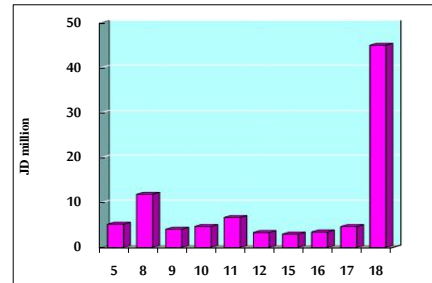
STOCK PRICE MARKET INDEX WEIGHTED BY FREE FLOAT MARKET CAP. (2012=1000)

	TUESDAY 17/12/2019	WEDNESDAY 18/12/2019	% CHANGE	
			DAY BEFORE	YTD
FIRST MARKET	951.8	951.9	0.01%	-5.88%
SECOND MARKET	843.2	845.1	0.23%	1.63%

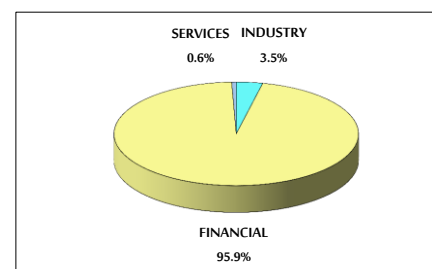
MARKET CAPITALIZATION (JD)

	14,829,233,985	14,862,358,266	0.22%	-7.82%
--	----------------	----------------	-------	--------

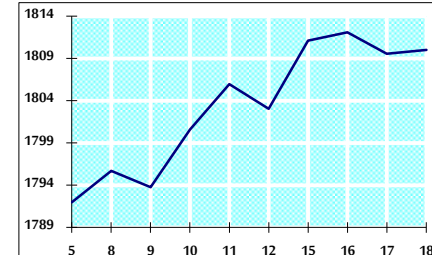
VALUE TRADED FROM 5/12 TO 18/12/2019



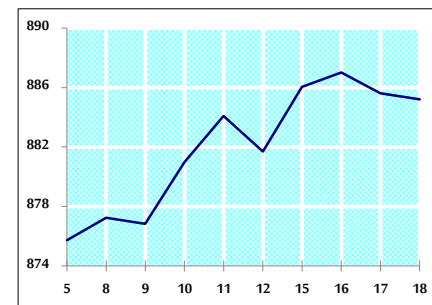
VALUE TRADED BY SECTOR WEDNESDAY 18/12/2019



GENERAL FREE FLOAT PRICE INDEX FROM 5/12 TO 18/12/2019



ASE20 FREE FLOAT PRICE INDEX FROM 5/12 TO 18/12/2019



GENERAL PRICE INDEX FROM 5/12 TO 18/12/2019

