

Daily Summary for Amman Stock Exchange

VALUE TRADED (JD)

	2018	2019	NET CHANGE	CHANGE (%)
Daily	5,608,316	3,482,637	-2,125,679	-37.90%
Cumulative(1/12-16/12)	49,590,273	63,035,348	13,445,075	27.11%
Cumulative(2/1-16/12)	1,776,837,135	1,490,006,406	-286,830,729	-16.14%

NO. OF SHARES TRADED

	2018	2019	NET CHANGE	CHANGE (%)
Daily	4,357,894	2,964,238	-1,393,656	-31.98%
Cumulative(1/12-16/12)	36,767,111	64,377,847	27,610,736	75.10%
Cumulative(2/1-16/12)	1,095,387,640	1,175,283,078	79,895,438	7.29%

NO. OF TRANSACTIONS

	2018	2019	NET CHANGE	CHANGE (%)
Daily	1,715	1,565	-150	-8.75%
Cumulative(1/12-16/12)	17,650	21,370	3,720	21.08%
Cumulative(2/1-16/12)	493,788	487,177	-6,611	-1.34%

SOME FINANCIAL RATIOS FOR THE ASE (16/12/2019)

SECTOR	P/E	P/BV	DIVIDEND YIELD (%)	TURNOVER (%)
FINANCIAL	10.677	0.955	6.024	0.052
SERVICES	14.635	1.090	5.734	0.023
INDUSTRY	16.918	1.388	3.827	0.050
OVERALL	11.325	1.052	5.740	0.045

STOCK PRICE INDEX WEIGHTED BY FREE FLOAT MARKET CAPITALIZATION (1999=1000)

	SUNDAY 15/12/2019	MONDAY 16/12/2019	% CHANGE	
			DAY BEFORE	YTD
GENERAL	1811.1	1812.1	0.05%	-5.07%
FINANCIAL	2443.3	2442.6	-0.03%	-7.92%
SERVICES	1293.3	1293.8	0.04%	1.10%
INDUSTRY	1827.2	1836.9	0.53%	-2.43%

STOCK PRICE INDEX WEIGHTED BY FREE FLOAT MARKET CAPITALIZATION ASE20 (2014=1000)

	886.0	887.0	0.11%	-4.25%
--	-------	-------	-------	--------

STOCK PRICE INDEX WEIGHTED BY MARKET CAPITALIZATION (1991=1000)

	SUNDAY 15/12/2019	MONDAY 16/12/2019	% CHANGE	
			DAY BEFORE	YTD
GENERAL	3499.9	3501.6	0.05%	-7.78%
BANKS	7075.2	7046.3	-0.41%	-14.55%
INSURANCE	1303.7	1301.7	-0.15%	-5.44%
SERVICES	736.2	737.5	0.17%	-7.45%
INDUSTRY	2587.6	2616.9	1.13%	13.22%

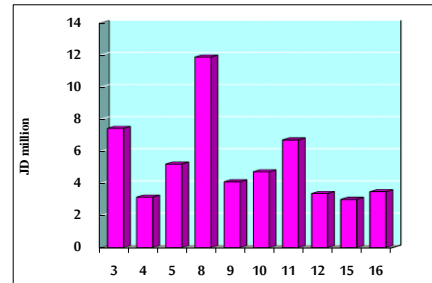
STOCK PRICE MARKET INDEX WEIGHTED BY FREE FLOAT MARKET CAP. (2012=1000)

	SUNDAY 15/12/2019	MONDAY 16/12/2019	% CHANGE	
			DAY BEFORE	YTD
FIRST MARKET	953.3	954.2	0.09%	-5.65%
SECOND MARKET	845.2	843.5	-0.20%	1.43%

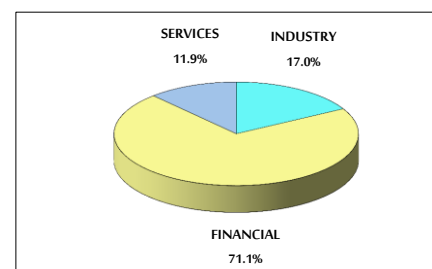
MARKET CAPITALIZATION (JD)

	14,808,297,761	14,824,665,873	0.11%	-8.05%
--	----------------	----------------	-------	--------

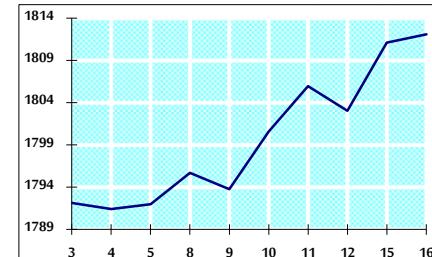
VALUE TRADED FROM 3/12 TO 16/12/2019



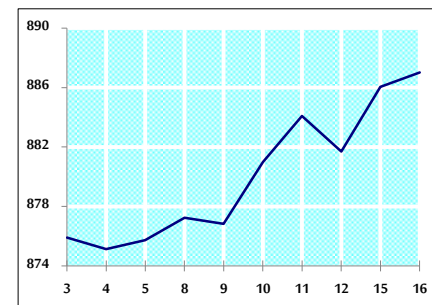
VALUE TRADED BY SECTOR MONDAY 16/12/2019



GENERAL FREE FLOAT PRICE INDEX FROM 3/12 TO 16/12/2019



ASE20 FREE FLOAT PRICE INDEX FROM 3/12 TO 16/12/2019



GENERAL PRICE INDEX FROM 3/12 TO 16/12/2019

